






Legend

-  Cadastre
-  TUFLOW Model Extents
-  Inundation Extents
-  0.2m (AHD) Peak Water Surface Elevation Contour
-  Velocity Vector
- represents velocity at time of peak water level
- reference vector = 9 m/s

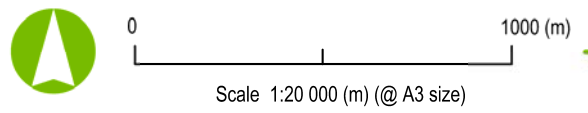
Notes:

1. This map must not be used without consideration of, or reference to, the Explanatory Notes and Disclaimers which are provided on the Gracemere Catchments Flood Study Figure 25 so as to understand the important limitations and conditions on such use.
2. This mapping considers local catchment flooding only. No consideration of Neerkol Creek or Padgoe Lagoon flooding has been made.
3. This mapping shows inundation within the Gracemere Catchments Flood Study TUFLOW model extents only. Flood inundation continues beyond the downstream extents of this mapping.

Date: 31/03/2012

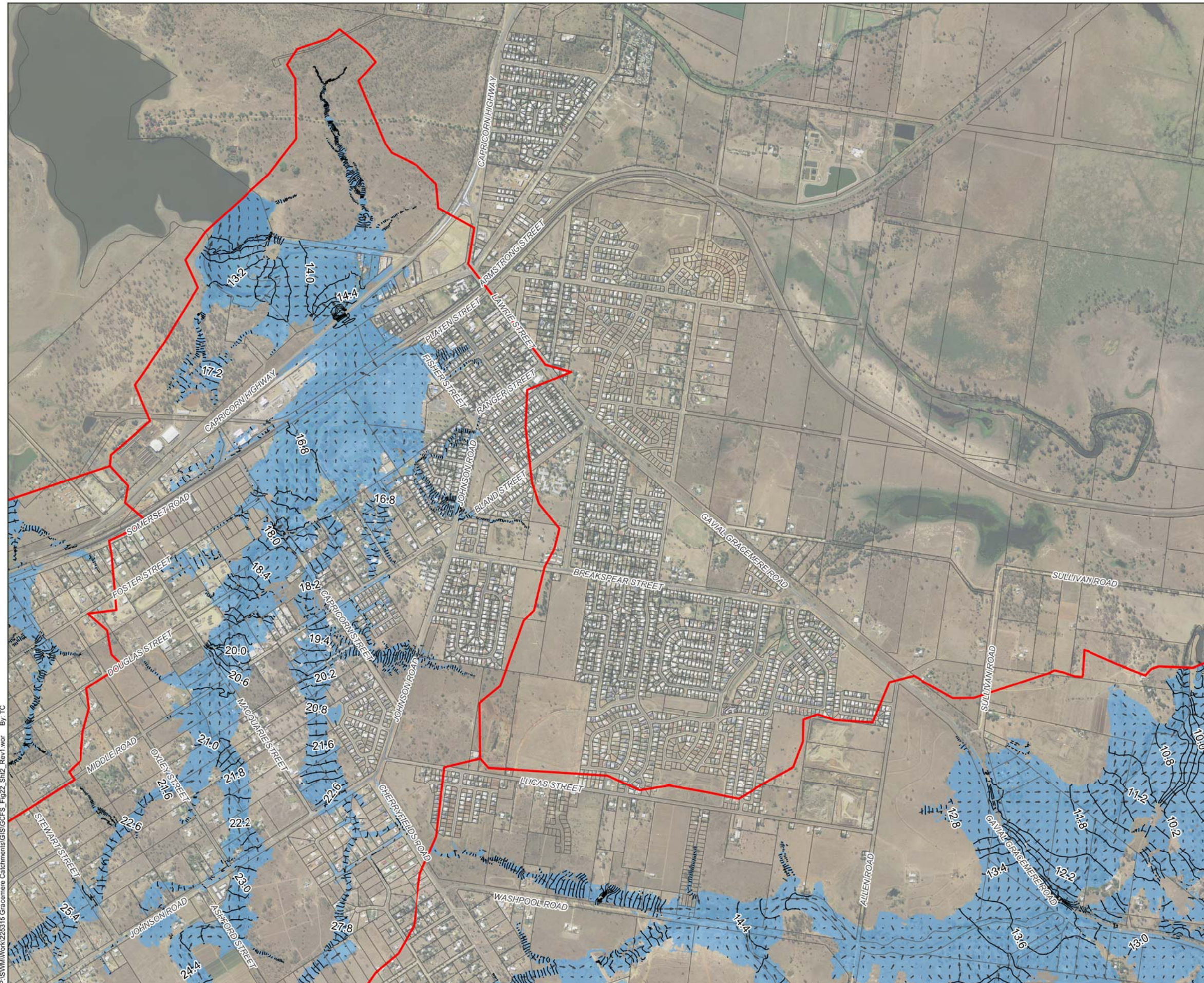
Version: 1

P:\SWM\Work\22315 Gracemere Catchments\GIS\GCFS_Fig22_Sht1_Rev1.wor By: TC



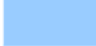




Projection: MGA Zone 56

Gracemere Catchments Flood Study
Figure 22: Sheet 1 - 100 Year ARI Inundation Extents, Peak Water Surface Elevations and Velocities



Legend

-  Cadastre
-  TUFLOW Model Extents
-  Inundation Extents
-  0.2m (AHD) Peak Water Surface Elevation Contour
-  Velocity Vector
- represents velocity at time of peak water level
- reference vector = 9 m/s

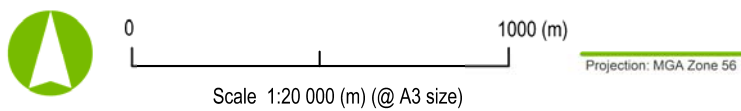
Notes:

1. This map must not be used without consideration of, or reference to, the Explanatory Notes and Disclaimers which are provided on the Gracemere Catchments Flood Study Figure 25 so as to understand the important limitations and conditions on such use.
2. This mapping considers local catchment flooding only. No consideration of Neerkol Creek or Padgoe Lagoon flooding has been made.
3. This mapping shows inundation within the Gracemere Catchments Flood Study TUFLOW model extents only. Flood inundation continues beyond the downstream extents of this mapping.

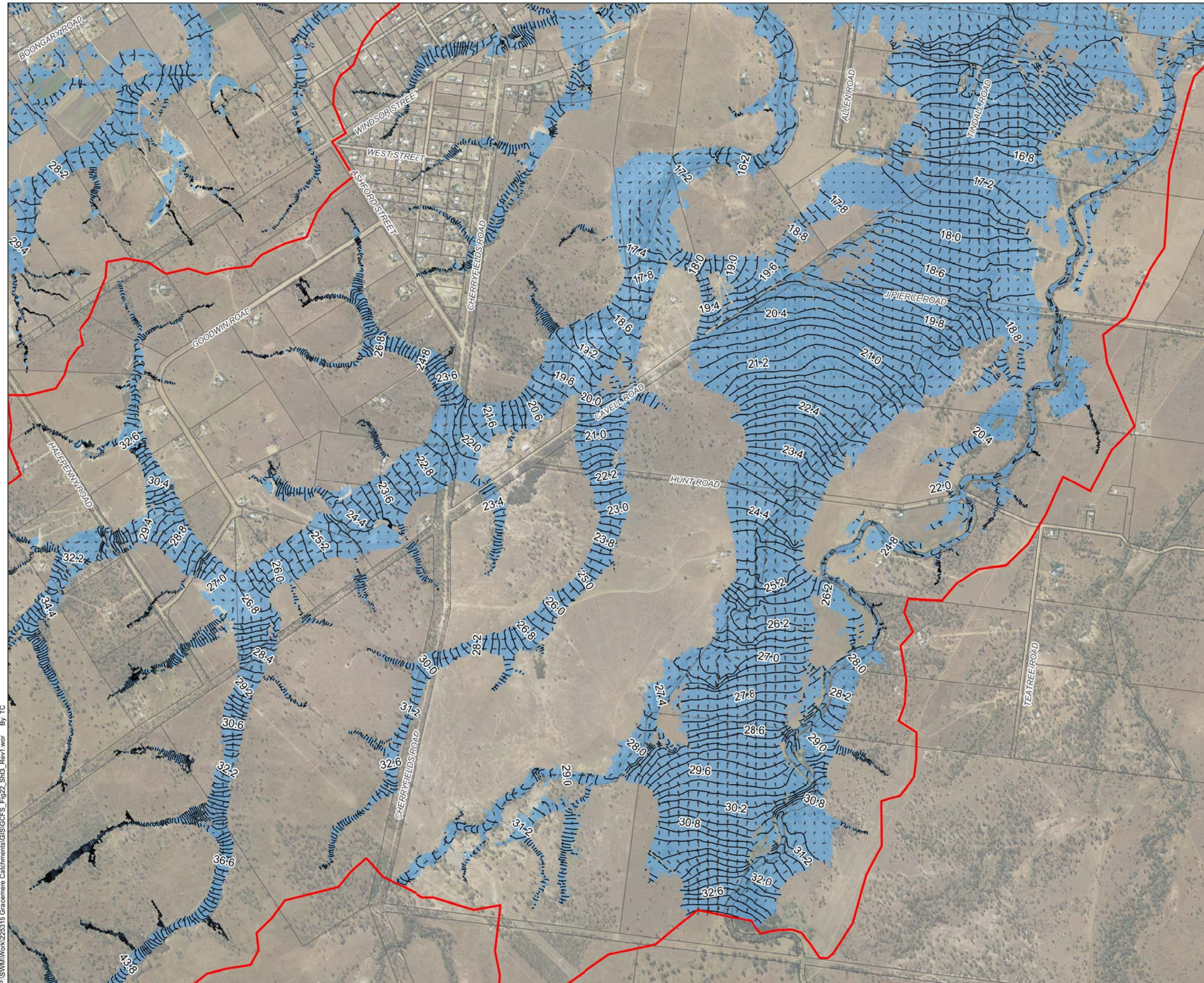
Date: 31/03/2012

Version: 1






P:\SWM\Work\22315 Gracemere Catchments\GIS\GCFS_Fig22_Sht2_Sht2_Rev1.wor By: TC



Gracemere Catchments Flood Study
Figure 22: Sheet 2 - 100 Year ARI Inundation Extents, Peak Water Surface Elevations and Velocities



Legend

-  Cadastre
-  TUFLOW Model Extents
-  Inundation Extents
-  0.2m (AHD) Peak Water Surface Elevation Contour
-  Velocity Vector
- represents velocity at time of peak water level
- reference vector = 9 m/s

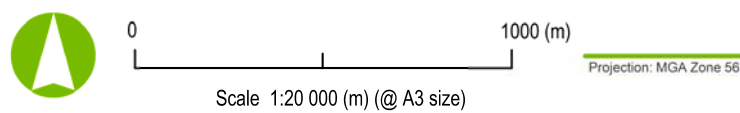
Notes:

1. This map must not be used without consideration of, or reference to, the Explanatory Notes and Disclaimers which are provided on the Gracemere Catchments Flood Study Figure 25 so as to understand the important limitations and conditions on such use.
2. This mapping considers local catchment flooding only. No consideration of Neerkol Creek or Padgoe Lagoon flooding has been made.
3. This mapping shows inundation within the Gracemere Catchments Flood Study TUFLOW model extents only. Flood inundation continues beyond the downstream extents of this mapping.

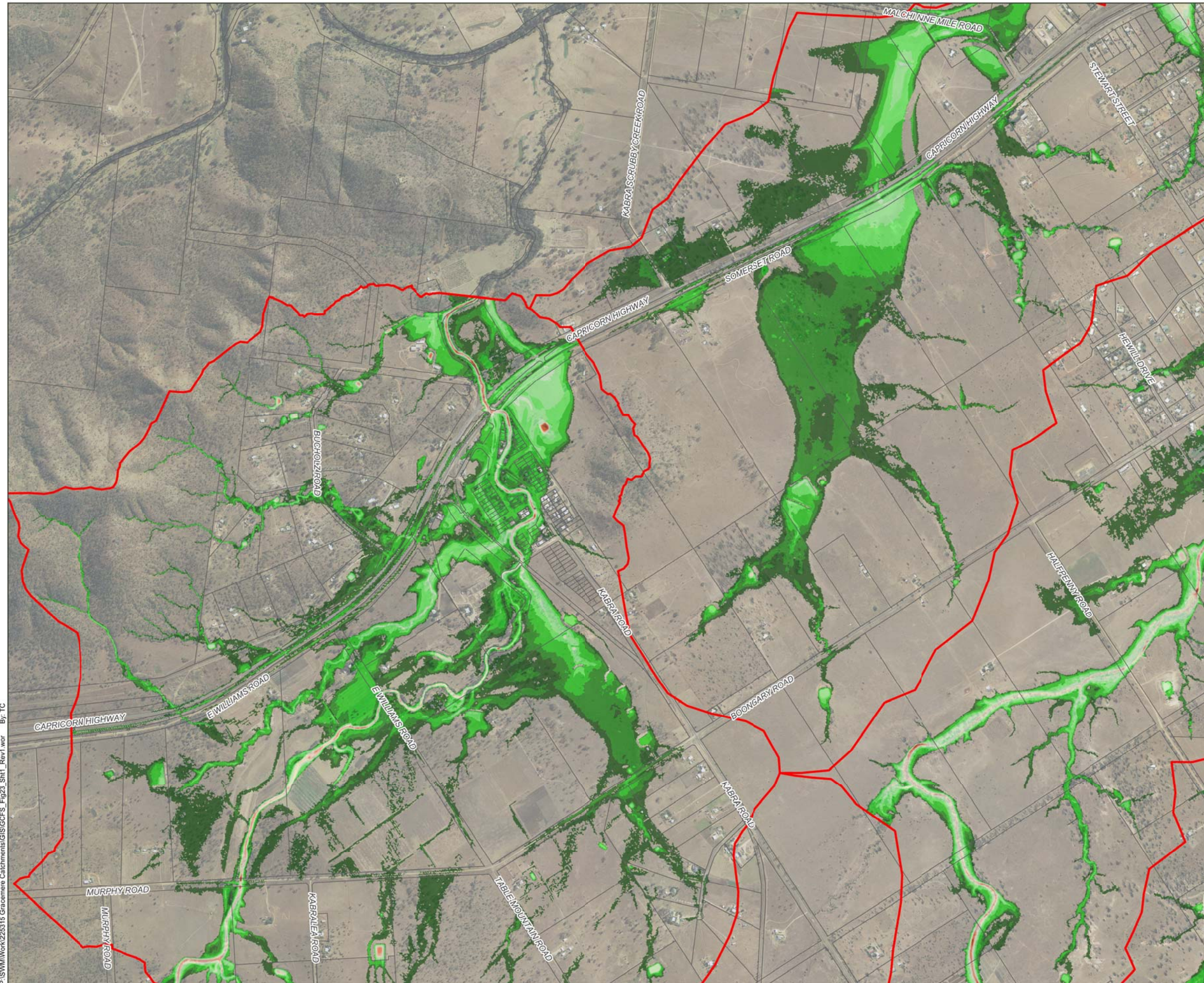
Date: 31/03/2012

Version: 1

P:\SWM\Work\22315 Gracemere Catchments\GIS\GCFS_Fig22_Sht3_Rev1.wor By: TC



Gracemere Catchments Flood Study
Figure 22: Sheet 3 - 100 Year ARI Inundation Extents, Peak Water Surface Elevations and Velocities



Legend

- Cadastre
- TUFLOW Model Extents

Depth (m)

- | | | | |
|--|------------|--|------------|
| | 0.0 to 0.3 | | 2.5 to 3.0 |
| | 0.3 to 0.5 | | 3.0 to 3.5 |
| | 0.5 to 1.0 | | 3.5 to 4.0 |
| | 1.0 to 1.5 | | 4.0 to 4.5 |
| | 1.5 to 2.0 | | 4.5 to 5.0 |
| | 2.0 to 2.5 | | > 5.0 |

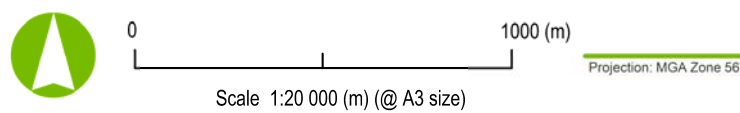
Notes:

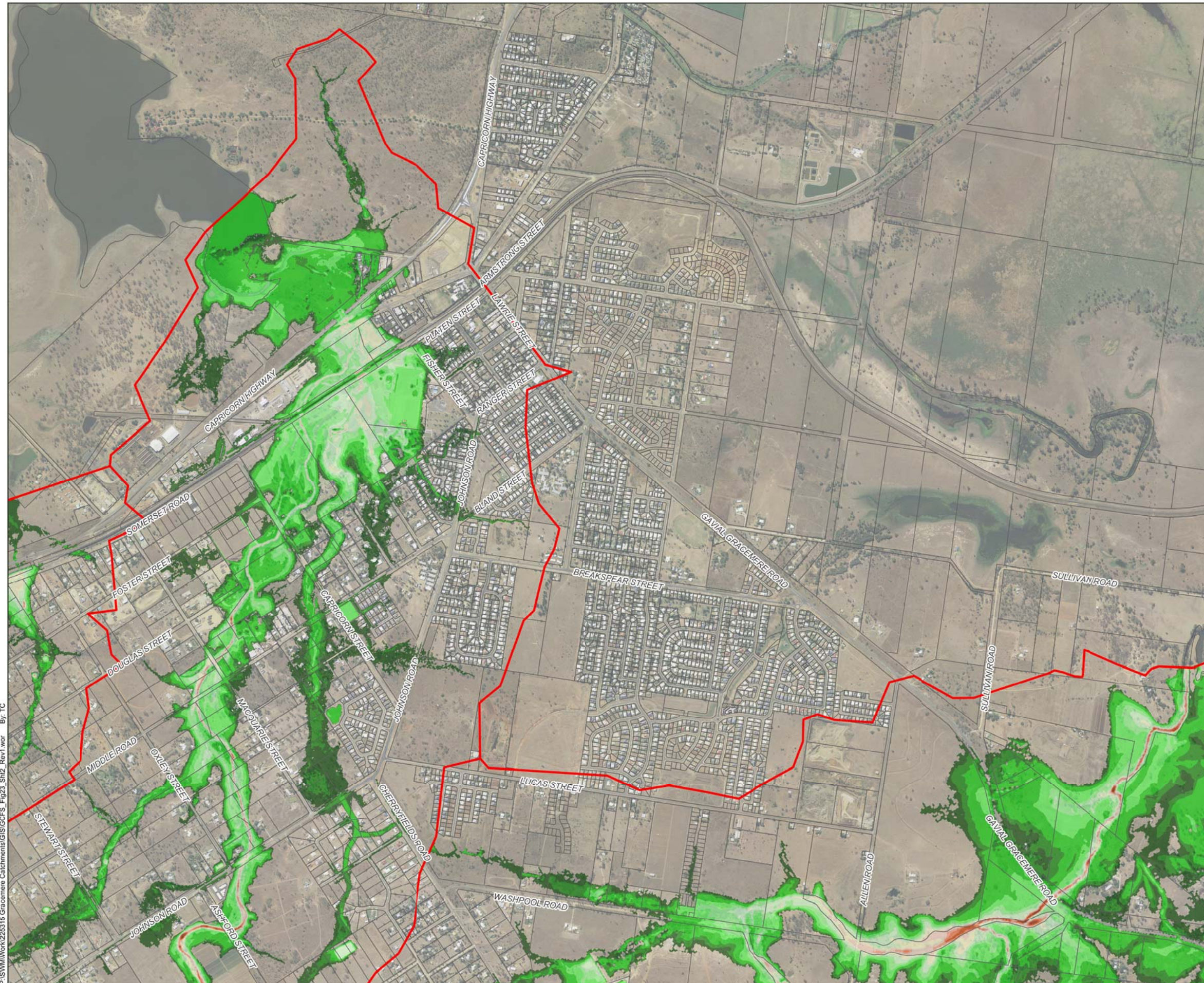
1. This map must not be used without consideration of, or reference to, the Explanatory Notes and Disclaimers which are provided on the Gracemere Catchments Flood Study Figure 25 so as to understand the important limitations and conditions on such use.
2. This mapping considers local catchment flooding only. No consideration of Neerkol Creek or Padgoe Lagoon flooding has been made.
3. This mapping shows inundation within the Gracemere Catchments Flood Study TUFLOW model extents only. Flood inundation continues beyond the downstream extents of this mapping.

Date: 31/03/2012

Version: 1

P:\SWM\Work\22315 Gracemere Catchments\GIS\GCFS_Fig23_Sht1_Rev1.wor By: TC





Legend

- Cadastre
- TUFLOW Model Extents

Depth (m)

- | | |
|------------|------------|
| 0.0 to 0.3 | 2.5 to 3.0 |
| 0.3 to 0.5 | 3.0 to 3.5 |
| 0.5 to 1.0 | 3.5 to 4.0 |
| 1.0 to 1.5 | 4.0 to 4.5 |
| 1.5 to 2.0 | 4.5 to 5.0 |
| 2.0 to 2.5 | > 5.0 |

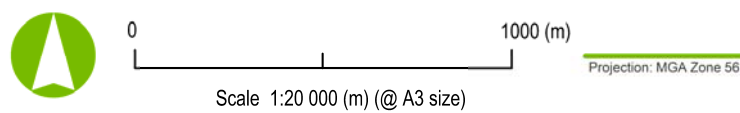
Notes:

1. This map must not be used without consideration of, or reference to, the Explanatory Notes and Disclaimers which are provided on the Gracemere Catchments Flood Study Figure 25 so as to understand the important limitations and conditions on such use.
2. This mapping considers local catchment flooding only. No consideration of Neerkol Creek or Padgoe Lagoon flooding has been made.
3. This mapping shows inundation within the Gracemere Catchments Flood Study TUFLOW model extents only. Flood inundation continues beyond the downstream extents of this mapping.

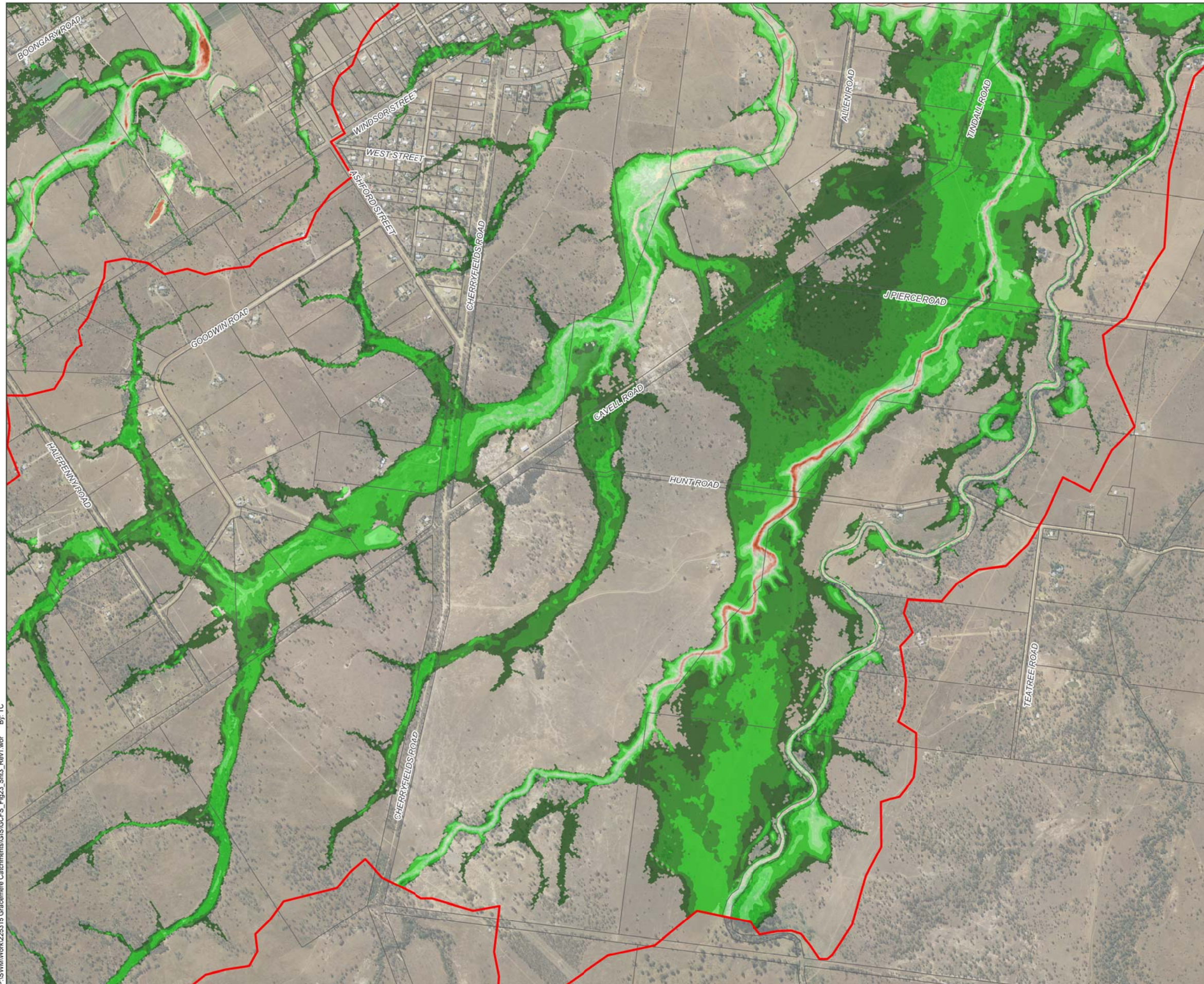
Date: 31/03/2012

Version: 1



P:\SWM\Work\22315 Gracemere Catchments\GIS\GCFS_Fig23_Sht2_Sht2_Rev1.wor By: TC













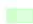

Gracemere Catchments Flood Study
Figure 23: Sheet 2 - 100 Year ARI Peak Depths



Legend

-  Cadastre
-  TUFLOW Model Extents

Depth (m)

- | | |
|--|--|
|  0.0 to 0.3 |  2.5 to 3.0 |
|  0.3 to 0.5 |  3.0 to 3.5 |
|  0.5 to 1.0 |  3.5 to 4.0 |
|  1.0 to 1.5 |  4.0 to 4.5 |
|  1.5 to 2.0 |  4.5 to 5.0 |
|  2.0 to 2.5 |  > 5.0 |

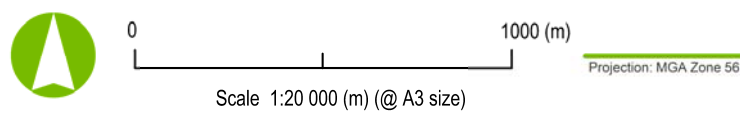
Notes:

1. This map must not be used without consideration of, or reference to, the Explanatory Notes and Disclaimers which are provided on the Gracemere Catchments Flood Study Figure 25 so as to understand the important limitations and conditions on such use.
2. This mapping considers local catchment flooding only. No consideration of Neerkol Creek or Padgoe Lagoon flooding has been made.
3. This mapping shows inundation within the Gracemere Catchments Flood Study TUFLOW model extents only. Flood inundation continues beyond the downstream extents of this mapping.

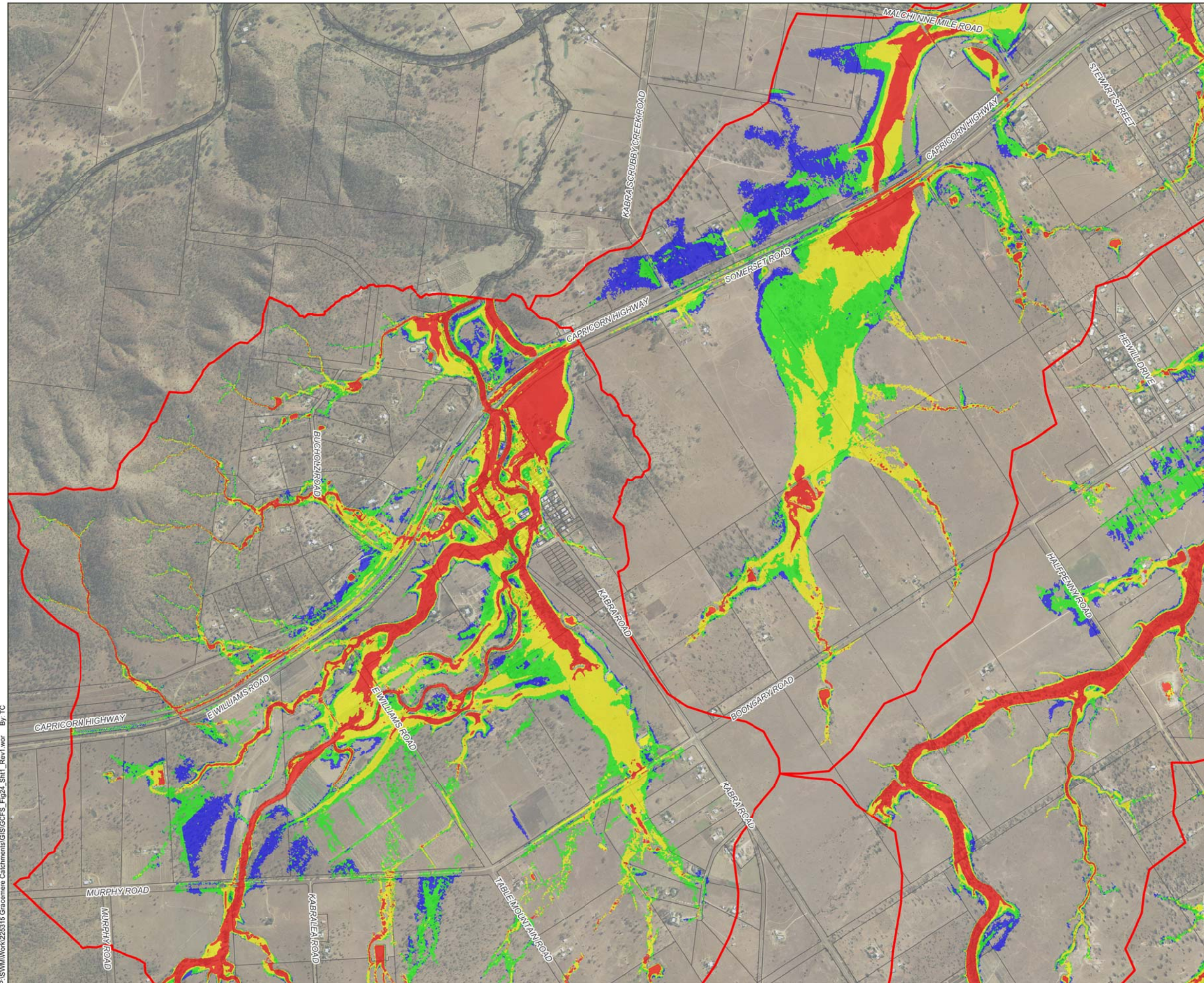
Date: 31/03/2012

Version: 1

P:\SWM\Work\22315 Gracemere Catchments\GIS\GCFS_Fig23_Sht3_Rev1.wor By: TC

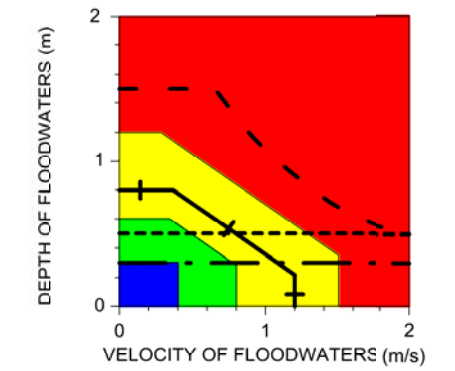


Gracemere Catchments Flood Study
Figure 23: Sheet 3 - 100 Year ARI Peak Depths



Legend

- Cadastre
- TUFLOW Model Extents



| Hazard Categories | Hazard Thresholds |
|-------------------|-------------------------|
| Extreme | Safe to Use Small Cars |
| High | Safe to Use 4WDs |
| Medium | Wading Limit - Children |
| Low | Wading Limit - Adults |

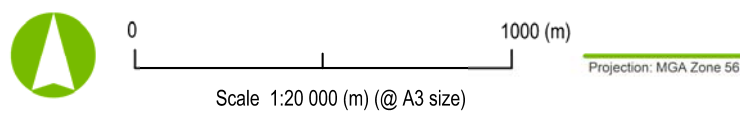
Notes:

1. This map must not be used without consideration of, or reference to, the Explanatory Notes and Disclaimers which are provided on the Gracemere Catchments Flood Study Figure 25 so as to understand the important limitations and conditions on such use.
2. This mapping considers local catchment flooding only. No consideration of Neerkol Creek or Padgoe Lagoon flooding has been made.
3. This mapping shows inundation within the Gracemere Catchments Flood Study TUFLOW model extents only. Flood inundation continues beyond the downstream extents of this mapping.

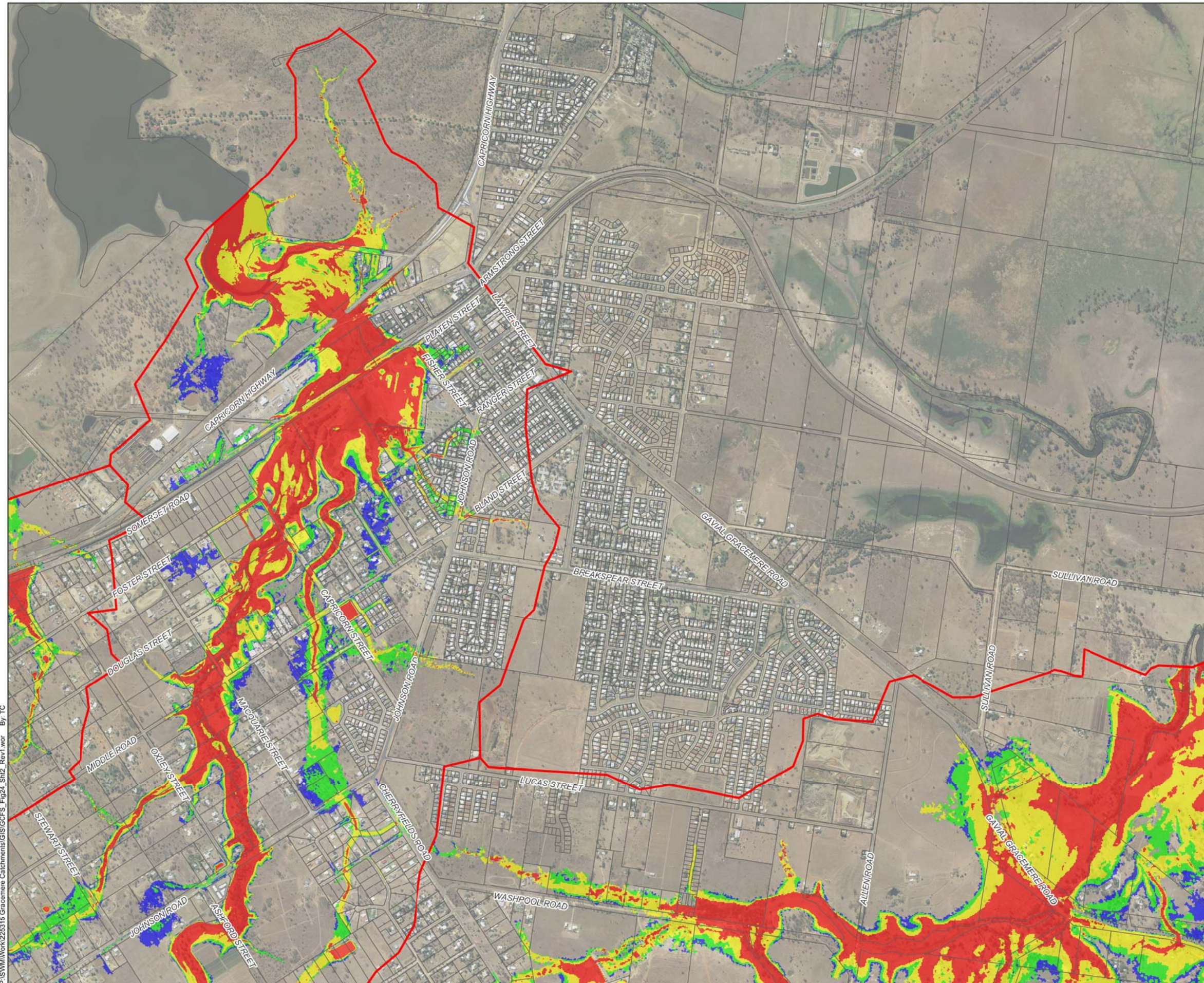
Date: 31/03/2012

Version: 1

P:\SWM\Work\22315 Gracemere Catchments\GIS\GCFS_Fig24_Sht1_Rev1.wor By: TC

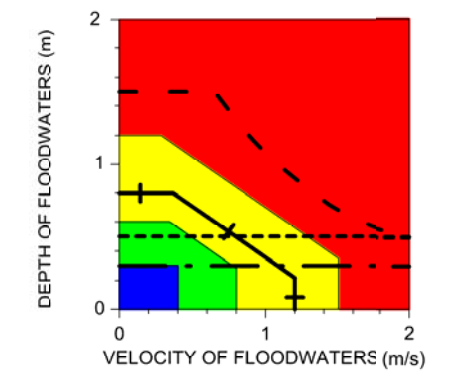


Gracemere Catchments Flood Study
Figure 24: Sheet 1 - 100 Year ARI Peak Hazards



Legend

- Cadastre
- TUFLOW Model Extents



| Hazard Categories | Hazard Thresholds |
|-------------------|-------------------------|
| Extreme | Safe to Use Small Cars |
| High | Safe to Use 4WDs |
| Medium | Wading Limit - Children |
| Low | Wading Limit - Adults |

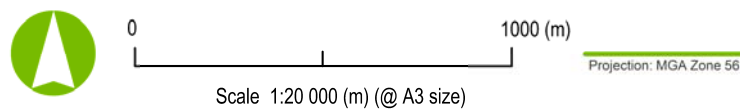
Notes:

1. This map must not be used without consideration of, or reference to, the Explanatory Notes and Disclaimers which are provided on the Gracemere Catchments Flood Study Figure 25 so as to understand the important limitations and conditions on such use.
2. This mapping considers local catchment flooding only. No consideration of Neerkol Creek or Padgoe Lagoon flooding has been made.
3. This mapping shows inundation within the Gracemere Catchments Flood Study TUFLOW model extents only. Flood inundation continues beyond the downstream extents of this mapping.

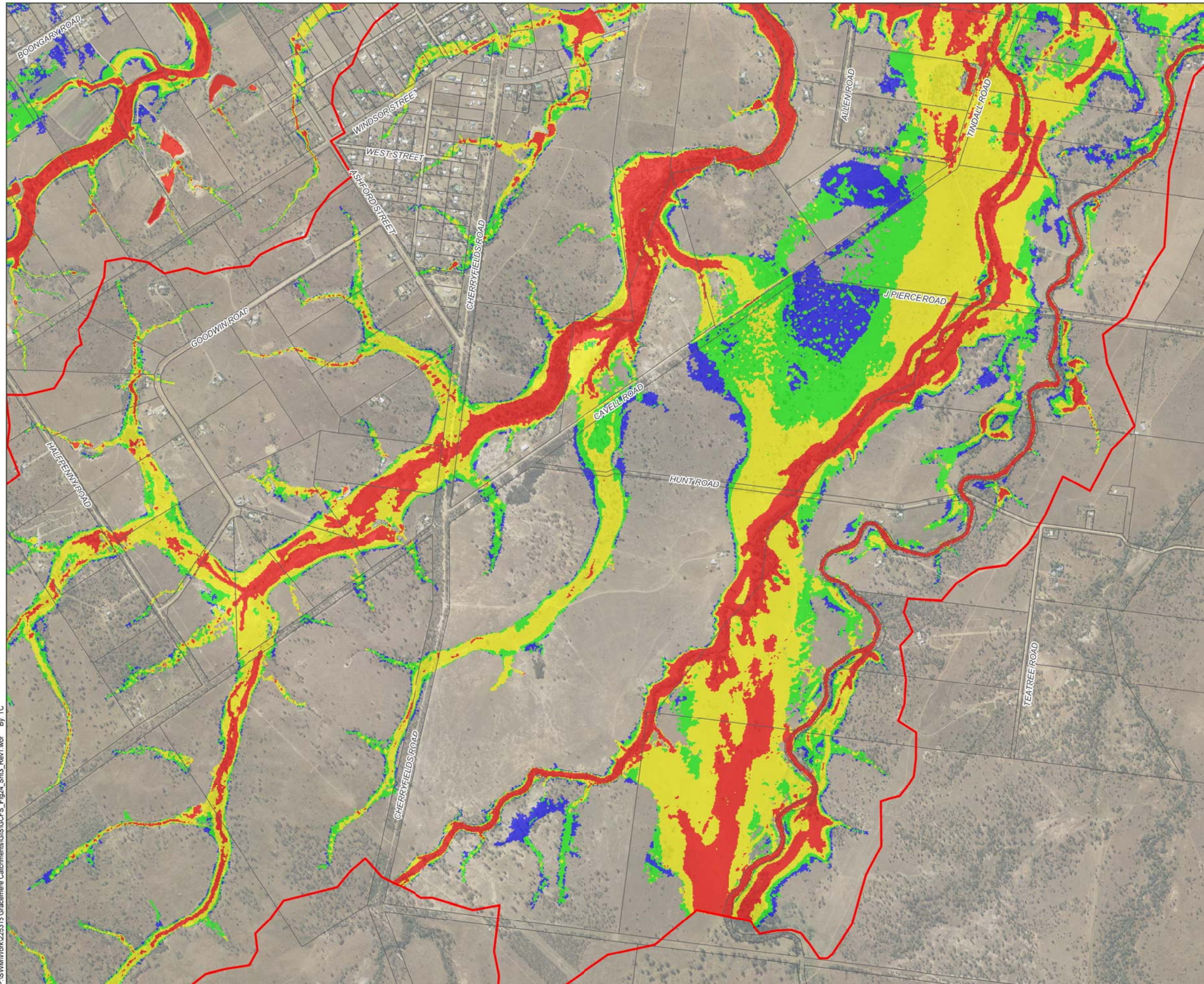
Date: 31/03/2012

Version: 1

P:\SWM\Work\22315 Gracemere Catchments\GIS\GCFS_Fig24_Sht2_Rev1.wor By: TC

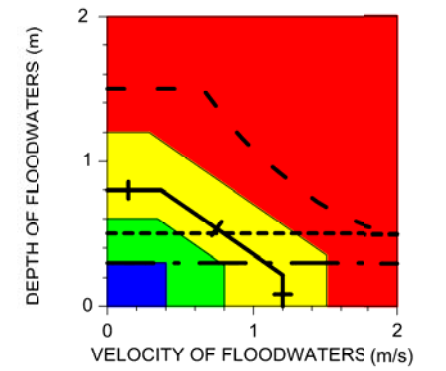


Gracemere Catchments Flood Study
Figure 24: Sheet 2 - 100 Year ARI Peak Hazards



Legend

- Cadastre
- TUFLOW Model Extents

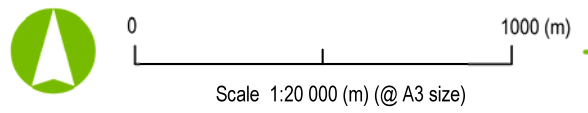


| Hazard Categories | Hazard Thresholds |
|-------------------|-------------------------|
| Extreme | Safe to Use Small Cars |
| High | Safe to Use 4WDs |
| Medium | Wading Limit - Children |
| Low | Wading Limit - Adults |

- Notes:**
- This map must not be used without consideration of, or reference to, the Explanatory Notes and Disclaimers which are provided on the Gracemere Catchments Flood Study Figure 25 so as to understand the important limitations and conditions on such use.
 - This mapping considers local catchment flooding only. No consideration of Neerkol Creek or Padgoe Lagoon flooding has been made.
 - This mapping shows inundation within the Gracemere Catchments Flood Study TUFLOW model extents only. Flood inundation continues beyond the downstream extents of this mapping.

Date: 31/03/2012 Version: 1

P:\SWM\Work\225315 Gracemere Catchments\GIS\GCFS_Fig24_Sht3_Rev1.wor By: TC



Projection: MGA Zone 56

Gracemere Catchments Flood Study
Figure 24: Sheet 3 - 100 Year ARI Peak Hazards