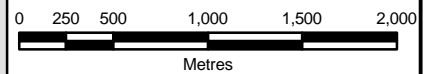
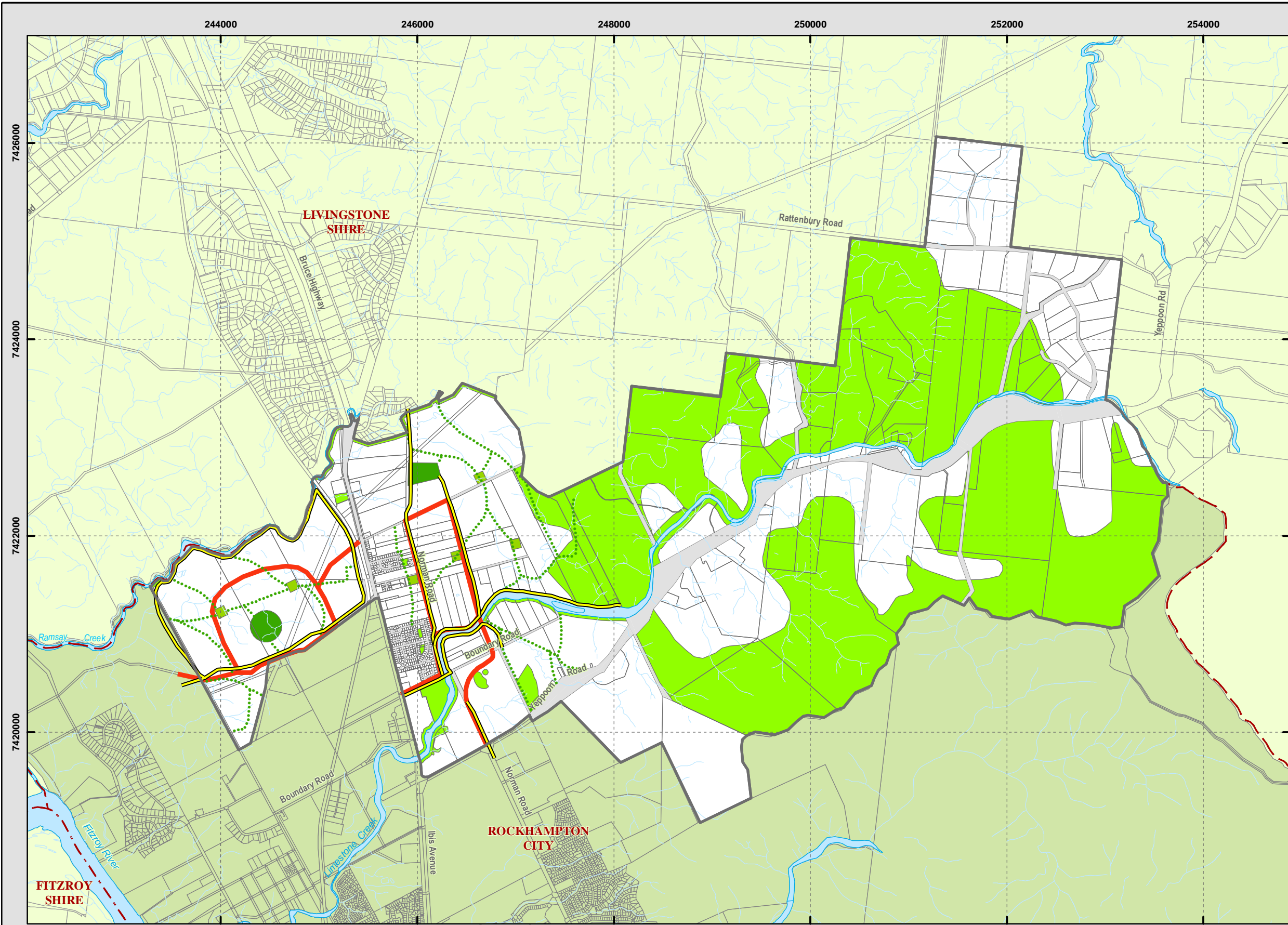


Figure 9 Overlay: Structure Plan Area Pedestrian, Cyclist and Public Transport Network

Structure Plan for Parkhurst and Yeppoon Road Corridor



1:40,000 at A3



CLIENTS PEOPLE PERFORMANCE

PRINTED: 08-11-2007

PROJECTION: Map Grid of Australia, Zone 56 (GDA94)
 "Based on or contains data provided by the State of Queensland (Department of Natural Resources and Water) [2007].
 In consideration of the State permitting use of this data you acknowledge and agree that the State gives no warranty in
 relation to the data (including accuracy, reliability, completeness, currency or suitability) and accepts no liability
 (including without limitation, liability in negligence) for any loss, damage or costs (including consequential damage) relating
 to any use of the data. Data must not be used for direct marketing or be used in breach of the privacy laws."

FILE: \\ghdnet\ghd\AUMackay\Projects\4213943\GIS\Map\13943-29_Open_Space_Network.mxd

Legend

- Local Government Boundary
- Study Area
- Cadastre
- Waterways
- Watercourses (overland flow paths)
- District Park
- Neighbourhood Park
- Environmental Value
- Open Space Links
Pedestrian Route
- Dedicated Cycle Route
- Public Transport Routes