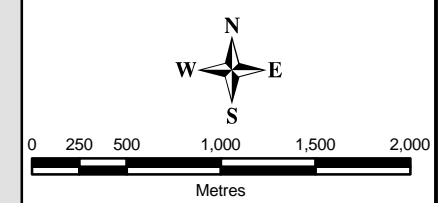
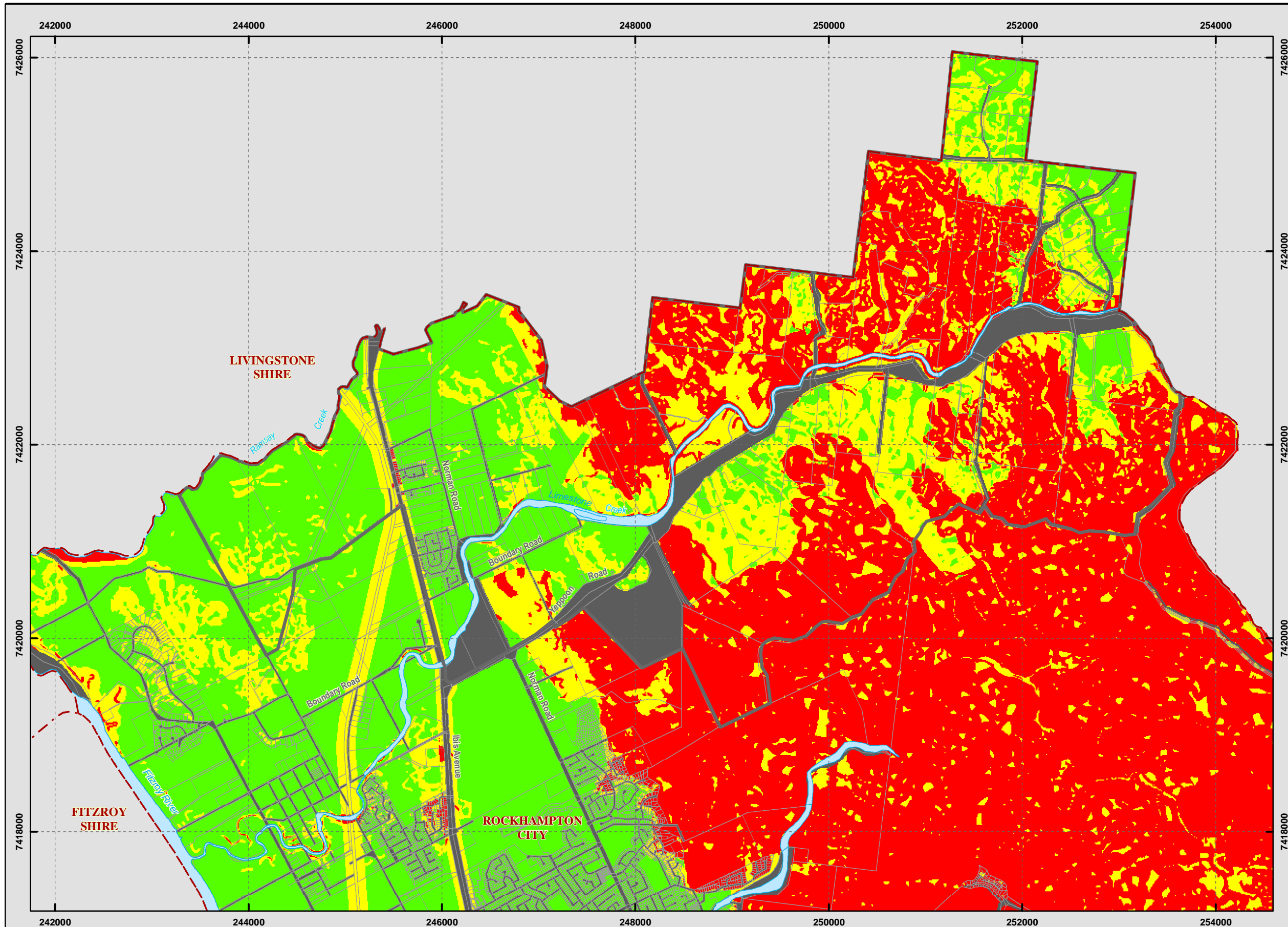


# Figure 2 Planning Study Land Suitability Assessment

Planning Study  
for Parkhurst  
and Yeppoon Road  
Corridor



1:40,000 at A3



CLIENTS | PEOPLE | PERFORMANCE

Date: 08-11-2007  
 Projection: Map Grid of Australia, Zone 56 (GDA94)  
 Base on or contains data provided by the Department of Natural Resources and Mines, Queensland (NR&M) [2007]. In consideration of NR&M permitting use of the data, you acknowledge and agree NR&M gives no warranty in relation to the data (including accuracy, reliability, completeness or suitability) and accepts no liability (including without limitation, liability in negligence) for any loss, damage or costs (including consequential damage) relating to any use of the data. File: G:\42\13943\101 Mapping (GIS and PDF). Maps\Task 1 - Mapping\MXD\13943-18\_Constraints\_Map.mxd

Notes: Constraints map derived from the following datasets: Regional ecosystems, slope, fire hazard, flood hazard, DCDB, 50m buffer of Yaamba Road, and railway noise. Values calculated by addition of overlaid values. (1) Regional ecosystems: Non-remnant = 0, Not-Of-Concern = 2, Of-Concern (sub-dominant) = 3, Of-Concern (dominant) = 4, (no endangered species present within current extent). (2) Slope: <10% = 0, 10%-15% = 3, 15%-20% = 4, >20% = 5. (3) Fire hazard derived in accordance with the State Planning Policy Guidelines. Vegetation data derived from regional ecosystem information. Low hazard = 1, Medium hazard = 3, High hazard = 4. (4) Flood Hazard within 1 kilometre of the Fitzroy River taken from RCC Q100 scenario, other areas derived from contours and distance to waterways. Low hazard = 1, Medium hazard = 2, High hazard = 3. DCDB: Lots >1200m<sup>2</sup> = 0, Lots <1200m<sup>2</sup> = 2. (5) 50m buffer of Yaamba Road: Not in buffer = 0, Within buffer = 3. (6) Rail noise: Not in range of noise = 0, In range of noise = 3. (7) Excluded lots: Roads, waterways, lot 16 on LN2182, lot 224 on LN2896, lot 102 on LN2376 and lot 207 on LN1609 given an exclusion value (-1) and all other areas a value of 1. The final solution was then multiplied by this to show areas less than 0 as excluded. This map is indicative only and should only be used for its intended purpose. In consideration of GHD Pty Ltd permitting use of this map, you acknowledge and agree GHD Pty Ltd gives no warranty in relation to the data or derived map (including accuracy, reliability, completeness or suitability) and accepts no liability (including without limitation, liability in negligence) for any loss, damage or costs (including consequential damage) relating to any use of this map.

**Legend**

- Study Area
- Cadastral
- Local Government Boundary
- Waterways
- Excluded Lots
- Low sensitivity/ constraints
- Moderate sensitivity/ constraints
- High sensitivity/ constraints