

SITE PLAN - 17 Central Street, Mount Morgan

Lot 19 on 31138

23°38'50"S 150°23'14"E

23°38'50"S 150°23'17"E

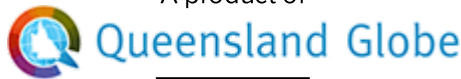


23°38'53"S 150°23'14"E

23°38'53"S 150°23'17"E

A product of

Legend located on next page



ROCKHAMPTON REGIONAL COUNCIL

APPROVED PLANS

These plans are approved subject to the current conditions of approval associated with

Development Permit No.: D/95-2023

Dated: 4 December 2023

0 10 metres

Scale: 1:470

Printed at: A4

Print date: 8/11/2023

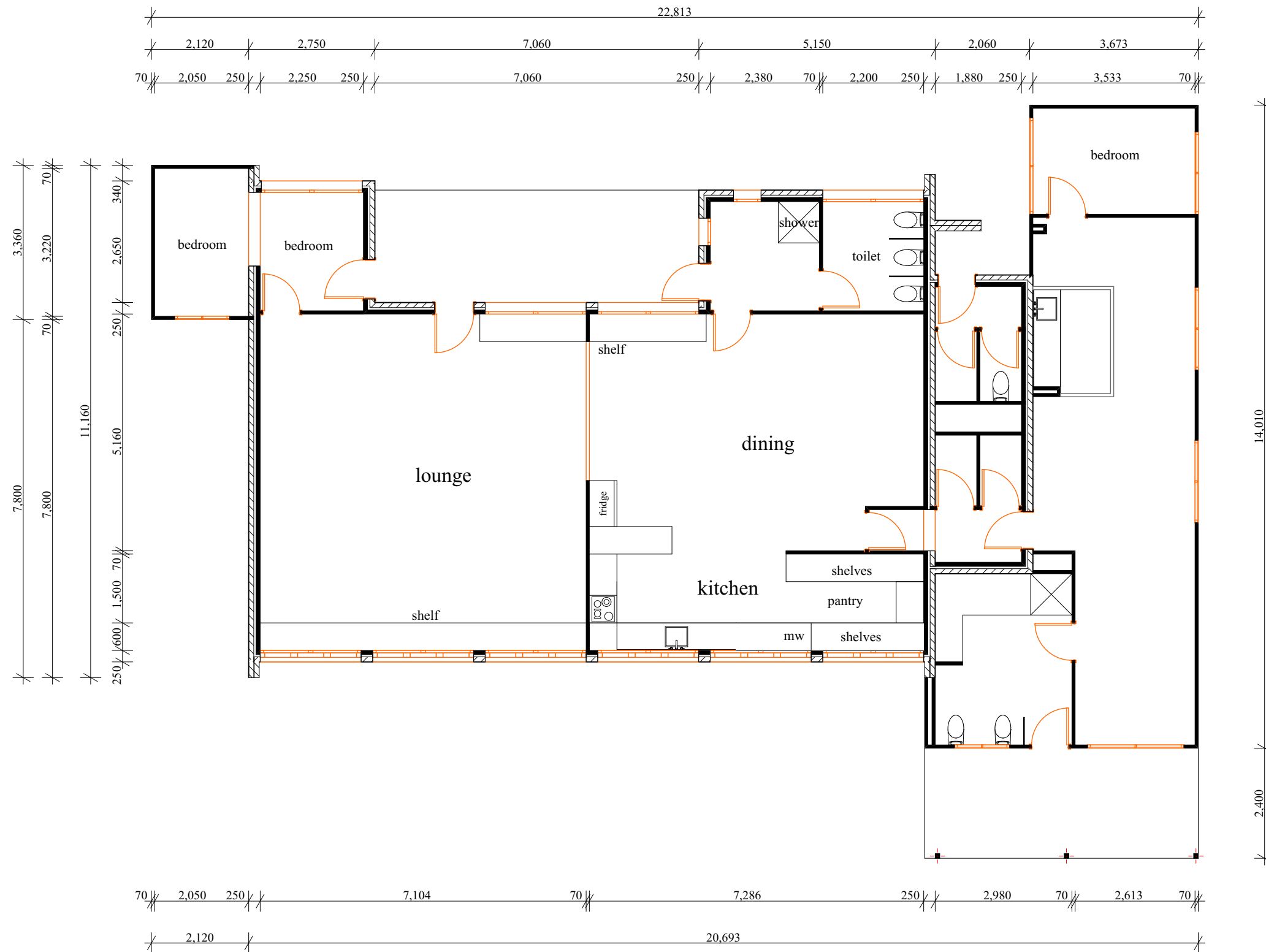
Not suitable for accurate measurement.
Projection: Web Mercator EPSG 102100 (3857)

For more information, visit
<https://qldglobe.information.qld.gov.au/help-info/Contact-us.html>



Includes material © State of Queensland 2023. You are responsible for ensuring that the map is suitable for your purposes. The State of Queensland makes no representation or warranties in relation to the map contents and disclaims all liability.

If imagery is displayed, imagery includes material © CNES reproduced under license from Airbus DS, all rights reserved © 21AT © Earth-i, all rights reserved, © Planet Labs PBC, 2023



ROCKHAMPTON REGIONAL COUNCIL
APPROVED PLANS

These plans are approved subject to the current conditions of approval associated with
Development Permit No.: D/95-2023
Dated: 4 December 2023

Wind Category
W
Cyclonic
Region

RPD
Lot
SP
Parish of
County of

Proposed Dwelling for
Lisa Wyvill
at 17 Central Street,
Mount Morgan.

Date Issued: 21 July 2023

Scale: 1:100

Designed: M. Jeremy
BSA: 74 215

A3 -