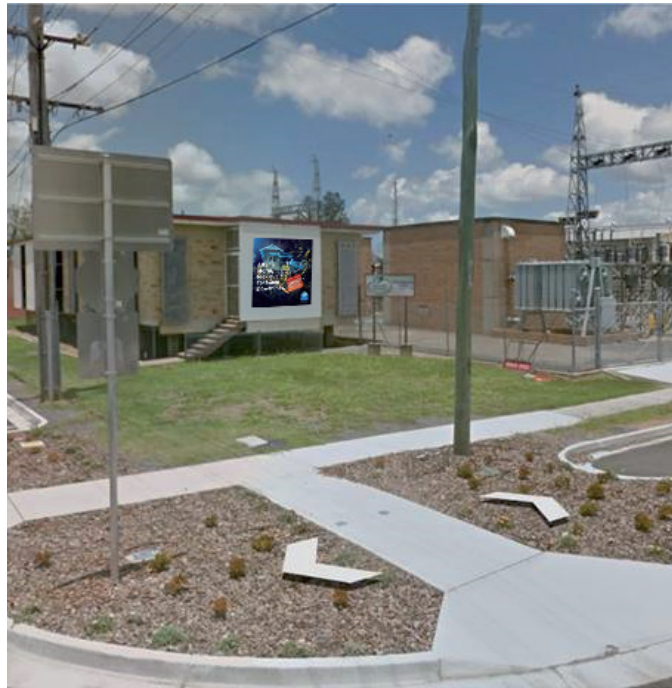


Proposed Advertising Device Rockhampton



Imposition



Dimensions:
2400 x 2400mm

Total area:
5.76 sqm

Duration:
Sign graphic insitu indefinitely

Material and fixing:
UV laminated aluminium composite panel sign, to be screw and glue fix installed to front wall of substation.

NOTE:
Sign graphic will be replaced intermittently to reflect current public safety messaging. Sign dimensions will not change.

ROCKHAMPTON REGIONAL COUNCIL

APPROVED PLANS

These plans are approved subject to the current conditions of approval associated with

Development Permit No.: D/59-2021

Dated: 28 June 2021

Proposed Advertising Device Rockhampton



ROCKHAMPTON REGIONAL COUNCIL

APPROVED PLANS

These plans are approved subject to the current conditions of approval associated with

Development Permit No.: D/59-2021

Dated: 28 June 2021