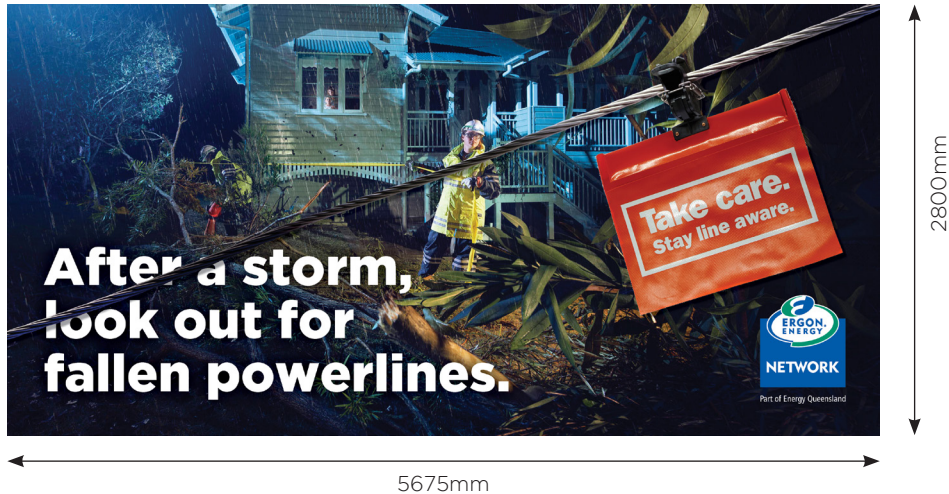
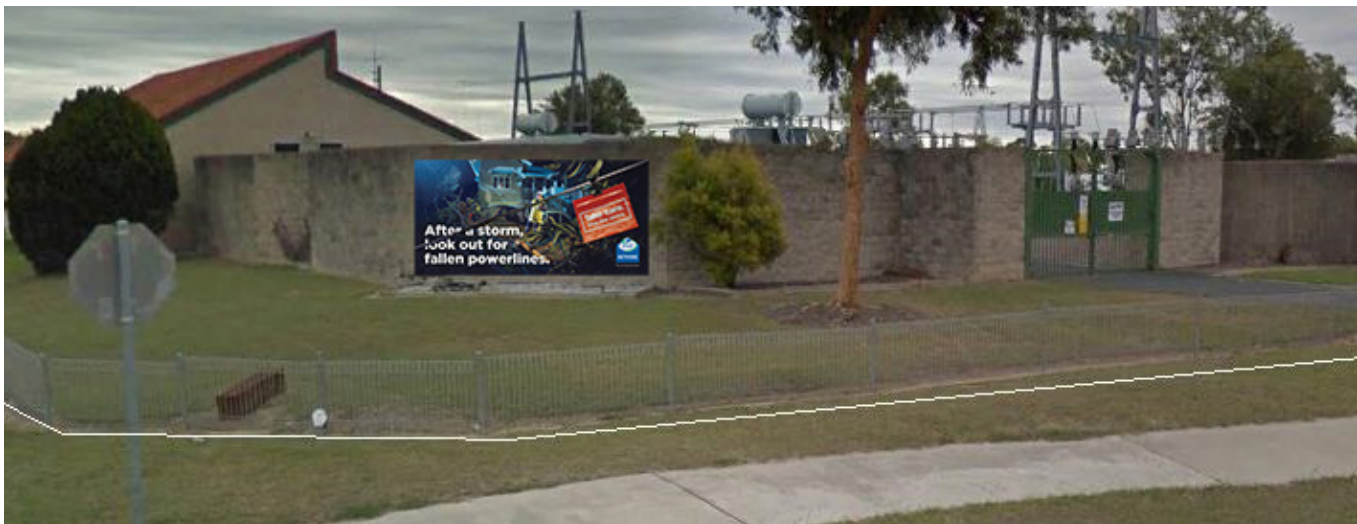


Proposed Advertising Device Rockhampton



Imposition



Dimensions:
5675 x 2800mm

Total area:
15.9sqm

Material and fixing:
Vinyl - Concrete plinth on the wall so a 50mm RHS frame will need to be installed to the wall for the flex face to clear the plinth

NOTE:
Sign graphic will be replaced intermittently to reflect current public safety messaging. Sign dimensions will not change.

ROCKHAMPTON REGIONAL COUNCIL
APPROVED PLANS

These plans are approved subject to the current conditions of approval associated with

Development Permit No.: D/36-2021

Dated: 30 April 2021

Rockhampton

Motor vehicle



Storm season



ROCKHAMPTON REGIONAL COUNCIL

APPROVED PLANS

These plans are approved subject to the current conditions of approval associated with

Development Permit No.: D/36-2021

Dated: 30 April 2021



Part of Energy Queensland