

**ROCKHAMPTON REGIONAL COUNCIL**

**APPROVED PLANS**

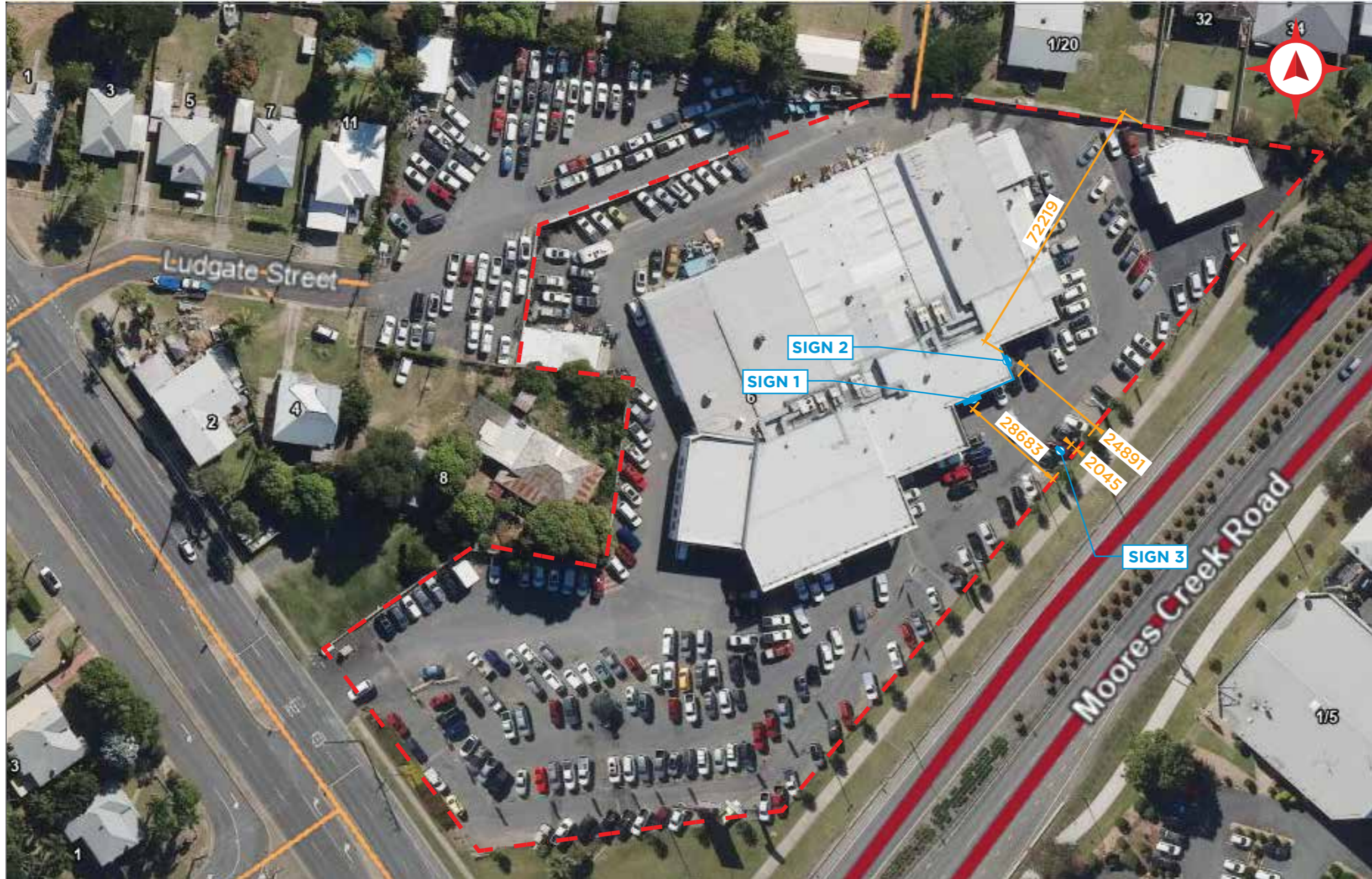
These plans are approved subject to the current conditions of approval associated with

**Development Permit No.: D/16-2024**

**Dated: 5 April 2024**

# Site Information

6 ALEXANDRA STREET  
PARK AVENUE QLD 4701



**SIGNAGE LIST:**

**SIGN 1 - IDENTIFICATION SIGN**  
ILLUMINATED  
3717MM X 787MM

**SIGN 2 - IDENTIFICATION SIGN**  
ILLUMINATED  
3436MM X 400MM

**SIGN 3 - IDENTIFICATION SIGN**  
ILLUMINATED  
2148MM X 5800MM X 270MM

**LEGEND/KEY:**

 Proposed Illuminated Signage

 Site Boundary

 Sign Distance From Site Boundary

**PLAN**

0 5 10 15 20 25m

SCALE Correct @A3

**ROCKHAMPTON REGIONAL COUNCIL**

**APPROVED PLANS**

These plans are approved subject to the current conditions of approval associated with

**Development Permit No.:** D/16-2024

**Dated:** 5 April 2024

# Photo Visual EXISTING

## Rockhampton GWM - QLD



# Photo Visual PROPOSED DAY VIEW

**ROCKHAMPTON REGIONAL COUNCIL**  
**APPROVED PLANS**  
 These plans are approved subject to the current conditions of approval associated with  
**Development Permit No.: D/16-2024**  
**Dated: 5 April 2024**

## Rockhampton GWM - QLD



**ROCKHAMPTON REGIONAL COUNCIL**

**APPROVED PLANS**

These plans are approved subject to the current conditions of approval associated with

**Development Permit No.: D/16-2024**

**Dated: 5 April 2024**

# Sign 3 - New 5.8m Pylon - Illuminated

## IDENTIFICATION SIGN

### Rockhampton GWM - QLD

SCALE 1:50

3mm Dark Grey clad to internal frameworks

Red illuminated LED strip

Illuminated 360h GWM logo  
Illuminated 225H GWM wordmark

MAXIMUM OUTPUT OF 250 LUMENS

**Installation**

Install pylon to ground with new footing

