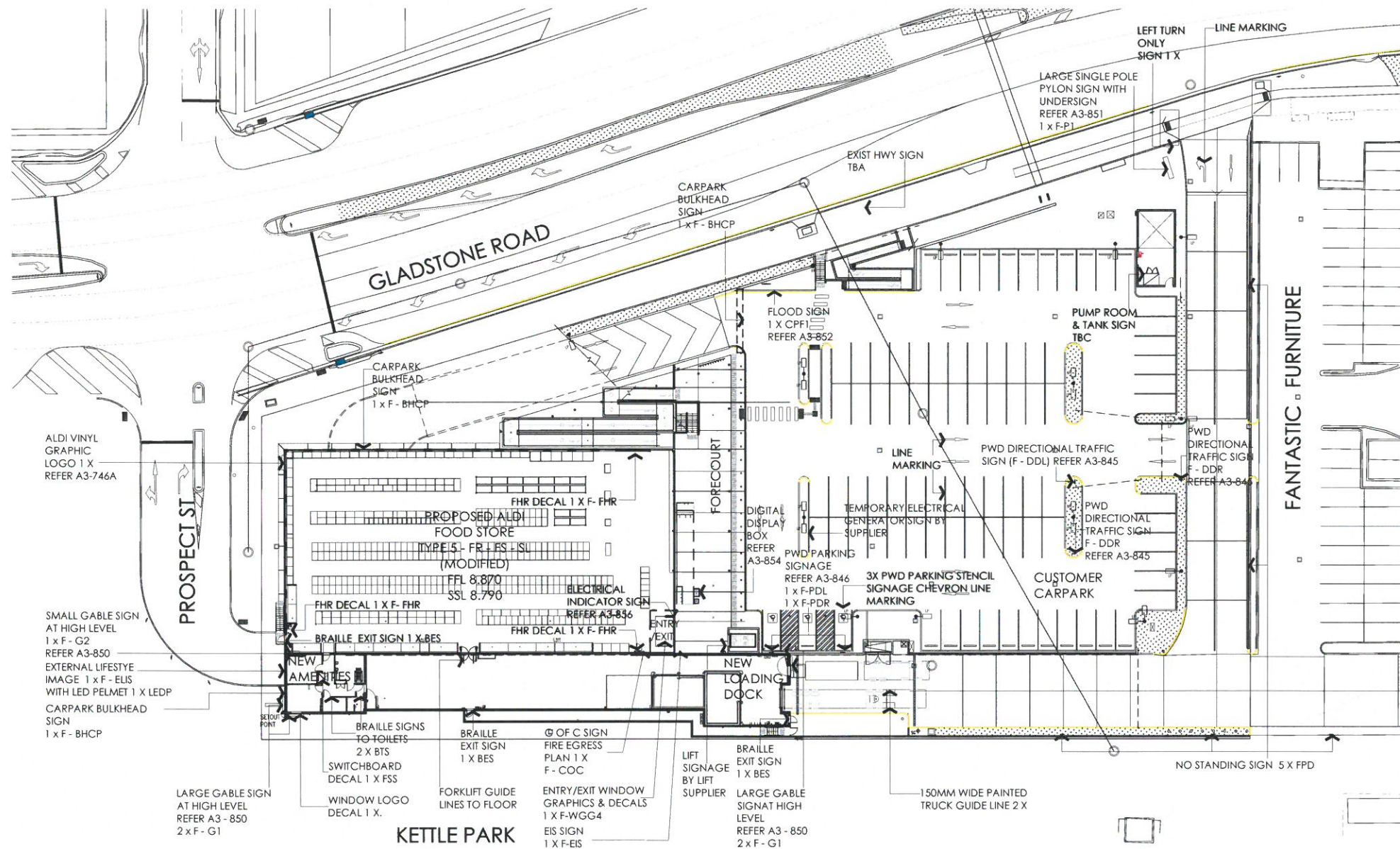


THIS DRAWING AND DESIGN IS SUBJECT TO COPYRIGHT AND MAY NOT BE REPRODUCED WITHOUT PRIOR WRITTEN CONSENT. DETAIL DRAWINGS ARE TO BE TAKEN IN PREFERENCE TO MORE GENERAL DRAWINGS. ALL DIMENSIONS TO BE VERIFIED PRIOR TO COMMENCEMENT OF ANY WORK. ANY DISCREPANCIES TO BE REFERRED TO THE ARCHITECT. USE FIGURED DIMENSIONS ONLY.

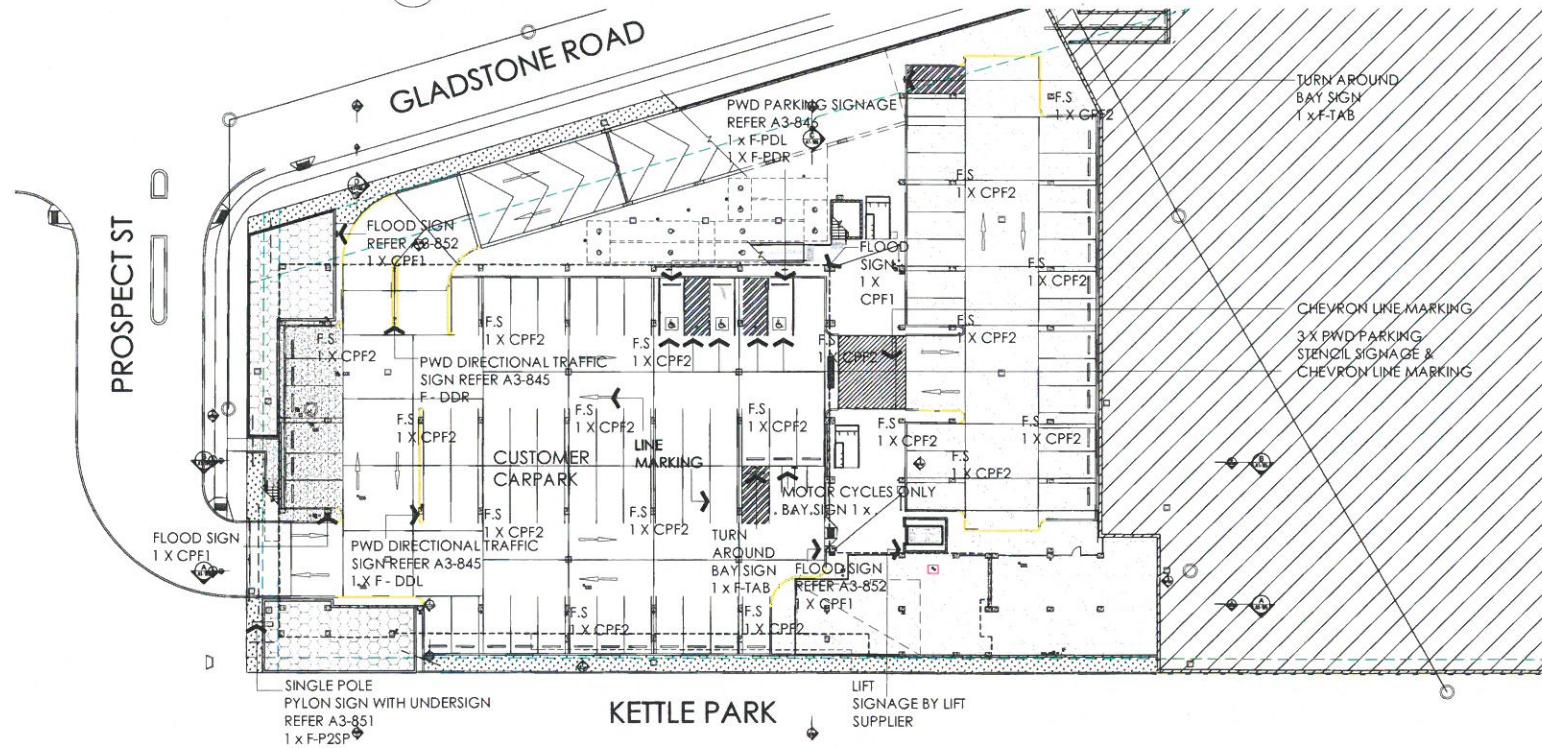
## TENDER NOT FOR CONSTRUCTION

No.	DATE	REVISION	BY
T1	25.07.2017	FOR TENDER	KEA

COPYRIGHT  
ALDI Stores (A Limited Partnership) All rights reserved. This work is covered by Copyright and cannot be reproduced or copied in any form or by means (graphic, electronic or mechanical photocopying) without the written permission of ALDI Stores. Any licence, express or implied, to use this document for any purpose whatsoever is restricted to the terms of the written agreement with ALDI Stores.



1 PROPOSED GROUND LEVEL SIGNAGE PLAN  
Scale: 1:350



2 PROPOSED LOWER LEVEL SIGNAGE PLAN  
Scale: 1:350

NOTES  
REFER TO CIVIL DRAWINGS AND SPECIFICATION FOR ALL ROAD TRAFFIC SIGNAGE FOUND OUTSIDE SITE BOUNDARY.

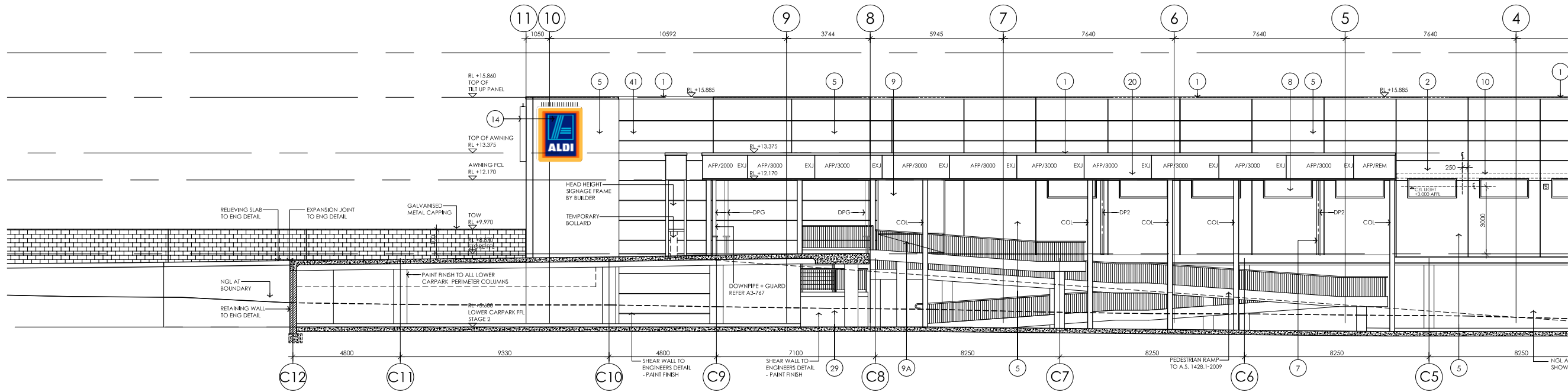
LEFFLER SIMES ARCHITECTS  
7 Young St, Hamilton, NSW 2170  
P: +61 2 9511 1144  
F: +61 2 9511 1144  
E: info@lefflersimes.com.au  
Level 2, 370 St. Marks St, 21290 Broadway St, Spring Hill  
P: +61 2 9511 1144  
F: +61 2 9511 1144  
E: info@lefflersimes.com.au

Client  
ALDI STORES  
(A LIMITED PARTNERSHIP)  
Project  
PROPOSED ALDI FOOD STORE  
143-167 GLADSTONE RD  
ALLENSTOWN, ROCKHAMPTON, QLD 4700  
Drawing Title  
PROPOSED SIGNAGE PLANS

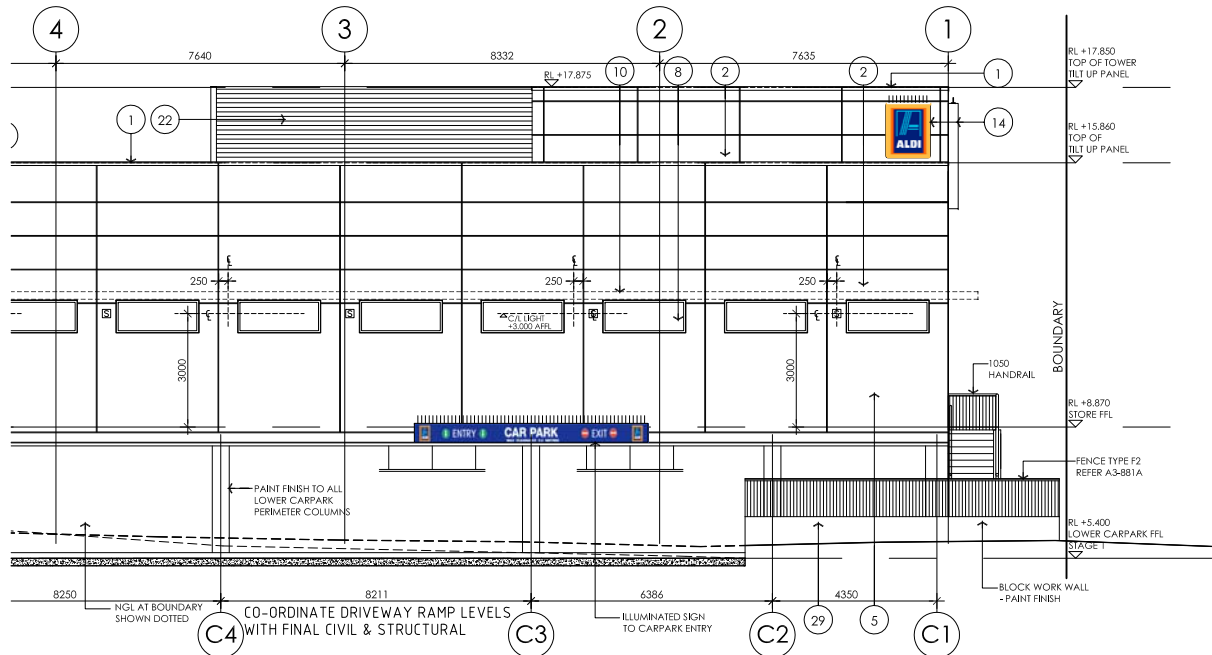
Drawn  
KEA  
Start Date  
01.03.2017  
Drawing Number  
QLD-G5-A1-080  
Checked  
CAC  
Scale  
1:350 @ A1  
Job Number  
4140  
Revision

QLD-G5-A1-080 T1

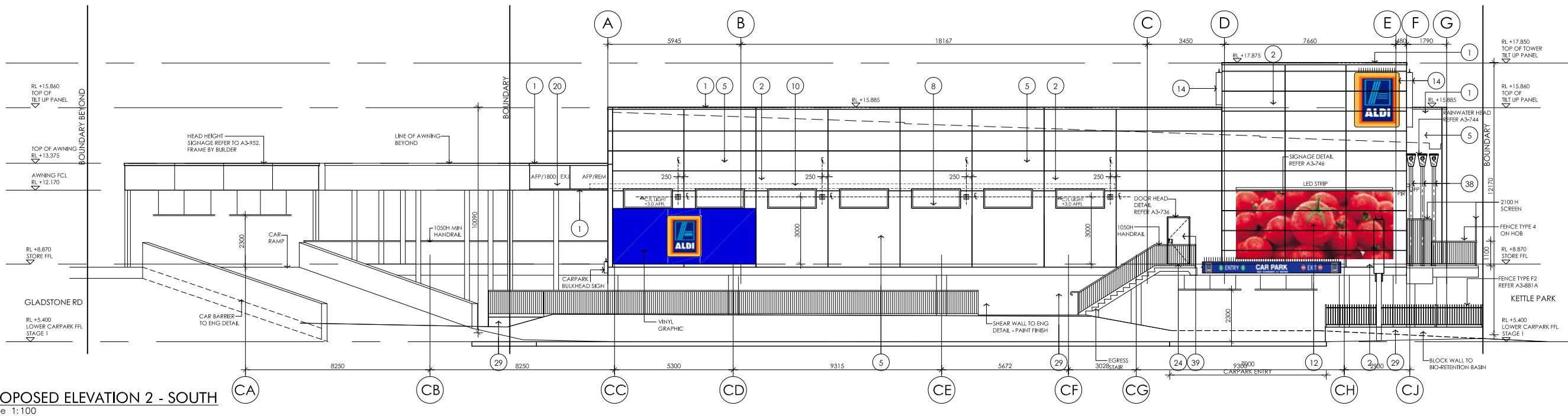




1 PROPOSED ELEVATION 1  
Scale 1:100



2 PROPOSED ELEVATION 1 - CONTINUED  
Scale 1:100



3 PROPOSED ELEVATION 2 - SOUTH  
Scale 1:100

**ROCKHAMPTON REGIONAL COUNCIL  
APPROVED PLANS**

These plans are approved subject to the  
current conditions of approval associated with

**Development Permit No: D/100-2017**

**Dated: 14 February 2018**

THIS DRAWING AND DESIGN IS SUBJECT TO COPYRIGHT AND  
MAY NOT BE REPRODUCED WITHOUT PRIOR WRITTEN  
CONSENT. DETAIL DRAWINGS ARE TO BE TAKEN IN  
REFERENCE TO MORE GENERAL DRAWINGS. ALL DIMENSIONS  
TO BE VERIFIED PRIOR TO COMMENCEMENT OF ANY WORK.  
ANY DISCREPANCIES TO BE REFERRED TO THE ARCHITECT.  
USE FIGURED DIMENSIONS ONLY.

**TENDER  
NOT FOR CONSTRUCTION**

No:	DATE:	REVISION:	BY:
T1	25.07.2017	FOR TENDER	KEA

**COPYRIGHT**  
ALDI Stores (A Limited Company. All rights reserved. This work is  
covered by Copyright and cannot be reproduced or copied in any form  
or by means graphic, electronic or mechanical photocopying) without the  
written permission of ALDI Stores. Any licence, express or implied,  
to use this document for any purpose whatsoever is restricted to the  
terms of the written agreement with ALDI Stores.

**LEGEND:**  
**GENERAL LEGEND:**  
AFP AWNING FASCIA PANEL - LENGTH NOTED  
/3000 IS A 3000 LONG SHEET  
/REM DENOTES THE REMAINDER  
DP DOWNPIPE - SIZE NOTED  
DP1 - 150H  
DP2 - 550H  
EXP EXPRESSED JOINT - 10mm  
MCJ METAL CLADDING JOINT  
OPF OVERFLOW POPOUT  
REFER TO THE ELECTRICAL DOCUMENTS FOR DETAILS OF FITTINGS  
H, R, S, PIR, STROBE

**LEGEND:**  
**COLOURS LEGEND:**  
1. COLORBOND CAPPING - 'BASALT GREY'  
2. TILT UP RC PANEL PAINTED - 'DRIVE TIME' (GREY)  
3. PANEL LIFT DOOR PAINTED 'OLDE PEWTER'  
4. ZINCALUME ROOF SHEETING  
5. TILT UP RC PANEL PAINTED - FLUORESCENT FIRE (RED)  
6. EXTERNAL WALL LINING MINOR COLORBOND 'BASALT GREY'  
7. RAINWATER PIPE - 'BASALT GREY'  
8. WINDOWS  
ALUMINIUM WINDOW FRAMES - P'COATED 'OLDE PEWTER'  
CLEAR SAFETY GLASS (TO COMPLY WITH SECTION J OF BCA)  
9. SHOPFRONT  
ALUMINIUM FRAMES - P'COATED 'OLDE PEWTER'  
WITH CLEAR SAFETY GLASS  
(TO COMPLY WITH SECTION J OF BCA)  
9A. SHOPFRONT  
ALUMINIUM FRAMES - P'COATED 'OLDE PEWTER'  
WITH COLOURBACK AND SAFETY GLASS  
10. SUNSCREEN  
FRAME P' COATED 'OLDE PEWTER'  
11. DOOR & FRAME - PAINTED 'OLDE PEWTER'  
12. TOMATO GRAPHIC  
13. ALDI ILLUMINATED SIGN  
14. ALDI ILLUMINATED SIGN  
15. GUTTER COLORBOND - 'BASALT GREY'  
16. FACE BLOCKWORK WITH CAPPING,  
ACOUSTIC FENCE OVER WALL IF CONDITIONED BY COUNCIL  
17. WALL LINING JOINT COLORBOND 'BASALT GREY'  
18. TROLLEY BAY - REFER A3-826  
19. DOOR AND FRAME - (TO MATCH WALL PANEL)  
FLUORESCENT FIRE (RED)  
20. COMPRESSED FIBRE CEMENT FASCIA TO AWNING  
PAINTED 'DRIVE TIME' (GREY)  
21. COLORBOND RAINWATER HEAD AND DOWNPIPE  
'BASALT GREY'  
22. P' COATED LOUVRES - 'OLDE PEWTER'  
23. P' COATED ALUMINIUM PLATE - 'OLDE PEWTER'  
24. STAINLESS STEEL FLAT PLATE TO DOOR THRESHOLD  
25. AIRLOCK  
FRAME P' COATED 'OLDE PEWTER'  
WITH CLEAR SAFETY GLASS  
(TO COMPLY WITH SECTION OF BCA)  
26. COLORBOND OVERFLOW 'BASALT GREY'  
27. P' COATED LOUVRED DOOR 'OLDE PEWTER' (GREY)  
28. FACE BLOCK PAINTED - FLUORESCENT FIRE (RED)  
29. FACE BLOCK PAINTED - 'DRIVE TIME' (GREY)  
30. CONCRETE BEAM PAINTED - 'DRIVE TIME' (GREY)  
31. CONCRETE BEAM PAINTED - FLUORESCENT FIRE (RED)  
32. FACE BLOCK RENDERED PAINTED - FLUORESCENT FIRE (RED)  
33. SNOW PEA GRAPHIC  
34. COMPRESSED FIBRE CEMENT WALL PANELS  
PAINTED 'DRIVE TIME' (GREY)  
35. COMPRESSED FIBRE CEMENT WALL PANELS  
PAINTED FLUORESCENT FIRE (RED)  
36. METAL FASCIA - COLORBOND 'DRIVE TIME' (GREY)  
37. FIBRE CEMENT SHEETING - EXISTING -  
PAINTED 'DRIVE TIME' (GREY)  
38. COLORBOND RAINWATER HEAD AND DOWNPIPE  
'BASALT GREY'  
39. EXTERNAL DOOR 'ALDI FLUORESCENT FIRE' (RED)  
40. EXTERNAL DOOR 'DRIVE TIME' (GREY)  
41. FACE BLOCK RENDERED PAINTED 'DRIVE TIME' (GREY)

**LEFFLER SIMES ARCHITECTS**

7 Young St, Neutral Bay Level 2, 270 St. Bourke St 2/290 Bourke St, Spring Hill  
Sydney NSW 2009 AUSTRALIA Melbourne VIC 3002 AUSTRALIA Brisbane QLD 4000 AUSTRALIA  
P +61 2 9909 3844 F +61 2 9909 3844 P +61 7 3123 5544 F +61 7 3123 5544  
P +61 2 9909 3828 F +61 2 9909 3828 P +61 7 383 1960 F +61 7 383 1960

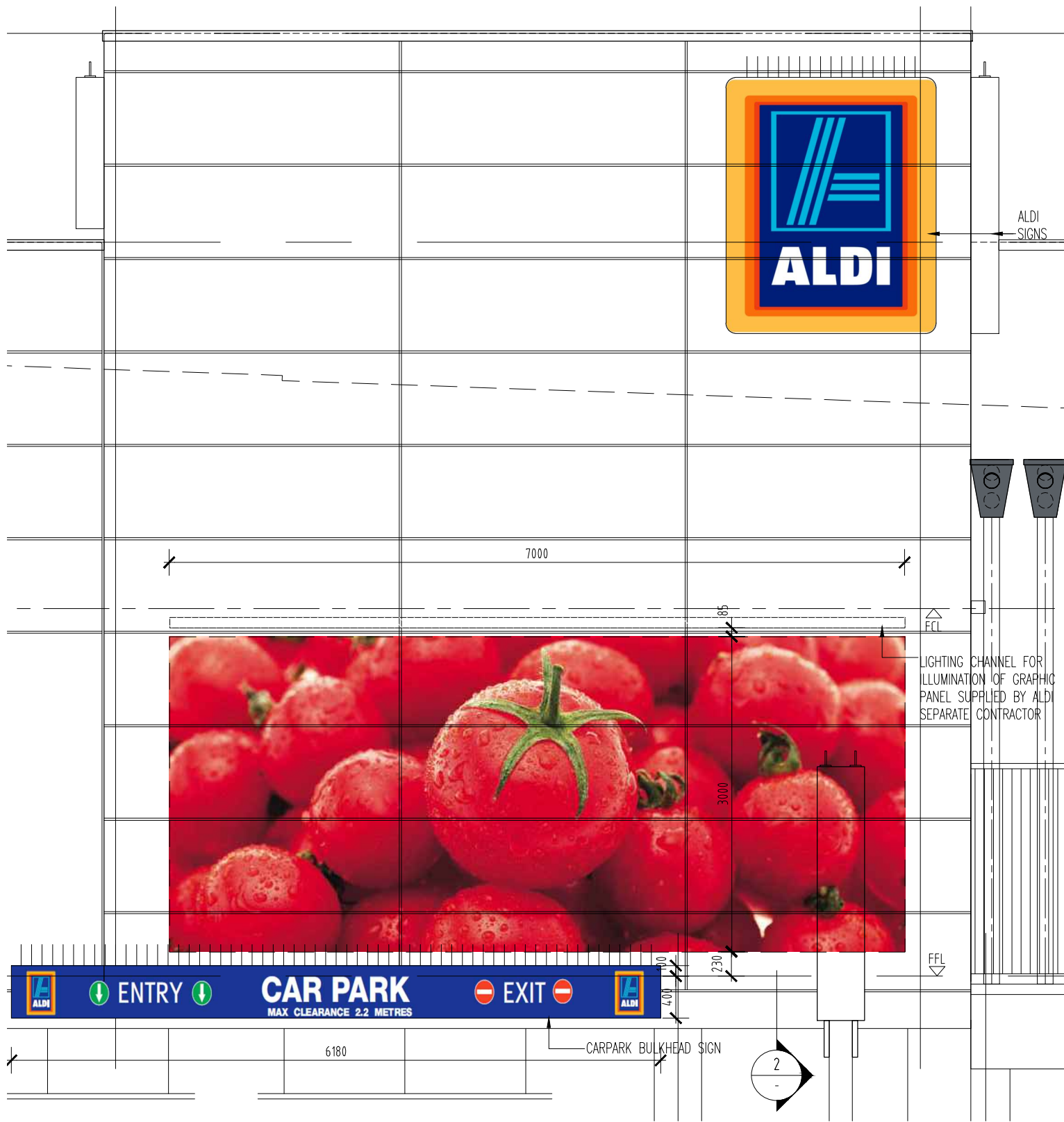
ACN 1001 543 992 ABN 1001 543 992  
E lefflers@lefflers.com.au E gills@lefflers.com.au

Client:  
**ALDI STORES  
(A LIMITED PARTNERSHIP)**  
Project:  
**PROPOSED ALDI FOOD STORE  
143-167 GLADSTONE RD  
ALLENSTOWN, ROCKHAMPTON, QLD 4700**

Drawing Title:  
**ELEVATIONS  
SHEET 1**

Drawn KEA	Checked CAC	Scale 1:100 @ A1
Start Date 01.03.2017	Job Number 4140	Revision
Drawing Number		

**QLD-G5-A1-170 T1**



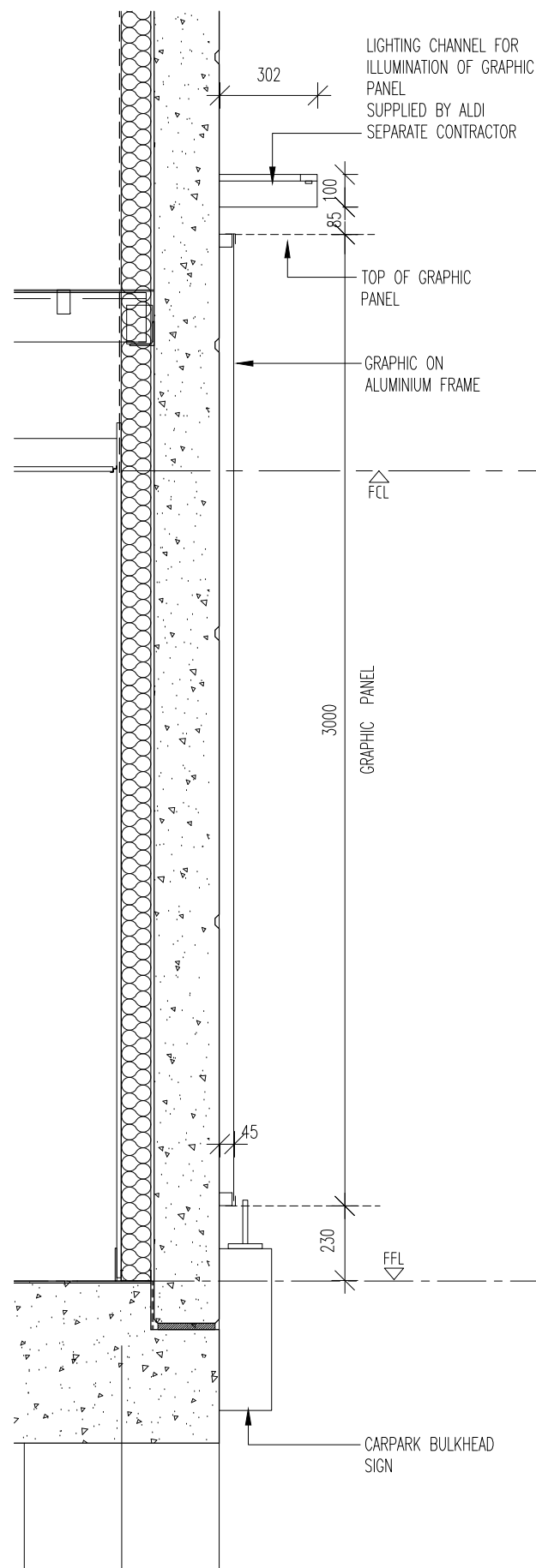
1 TYPICAL ELEVATION  
1:50

**ROCKHAMPTON REGIONAL COUNCIL  
APPROVED PLANS**

These plans are approved subject to the  
current conditions of approval associated with

**Development Permit No: D/100-2017**

**Dated: 14 February 2018**



2 SECTION  
1:20

THIS DRAWING AND DESIGN IS  
SUBJECT TO COPYRIGHT AND  
MAY NOT BE REPRODUCED  
WITHOUT PRIOR WRITTEN  
CONSENT. DETAIL DRAWINGS  
ARE TO BE TAKEN IN PREFERENCE  
TO MORE GENERAL DRAWINGS.  
ALL DIMENSIONS TO BE VERIFIED  
PRIOR TO COMMENCEMENT OF  
ANY WORK. ANY DISCREPANCIES  
TO BE REFERRED TO THE  
ARCHITECT.  
USE FIGURED DIMENSIONS ONLY.

**LEFFLER SIMES ARCHITECTS**

7 Young St, Neutral Bay  
Sydney NSW 2089  
P +61 2 9909 3344  
F +61 2 9909 3828  
W www.lefflersimes.com.au  
ACN 001 043 992

Level 2, 18 Oliver Lane  
Melbourne Vic 3000  
P +61 3 9654 6344  
F +61 3 9654 8244  
E sje@lefflersimes.com.au  
ABN 39 001 043 992

2 / 290 Boundary Street  
Spring Hill Qld 4000  
P +61 7 3123 5544  
F +61 7 3831 9860  
E jar@lefflersimes.com.au

Client  
**ALDI STORES  
(A LIMITED PARTNERSHIP)**

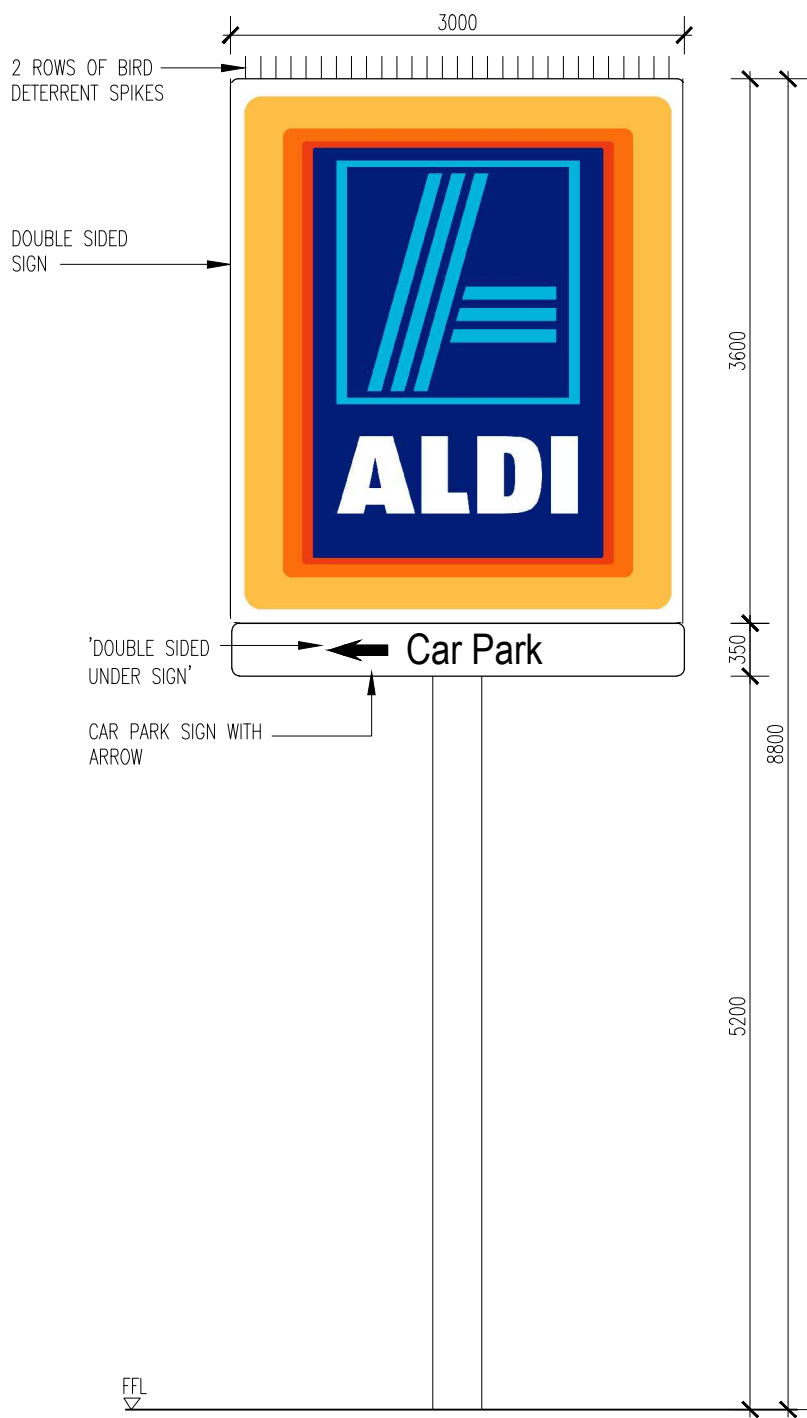
Project  
**ALDI FOOD STORE  
143-167 GLADSTONE ROAD  
ROCKHAMPTON, QLD 4700**

T1	FOR TENDER		25/07/17
NO	REVISION		DATE
Date	Drawn	Checked	Scale
JAN 2017	KEA	CAC	1:20, 1:50
Job Number			
4140			

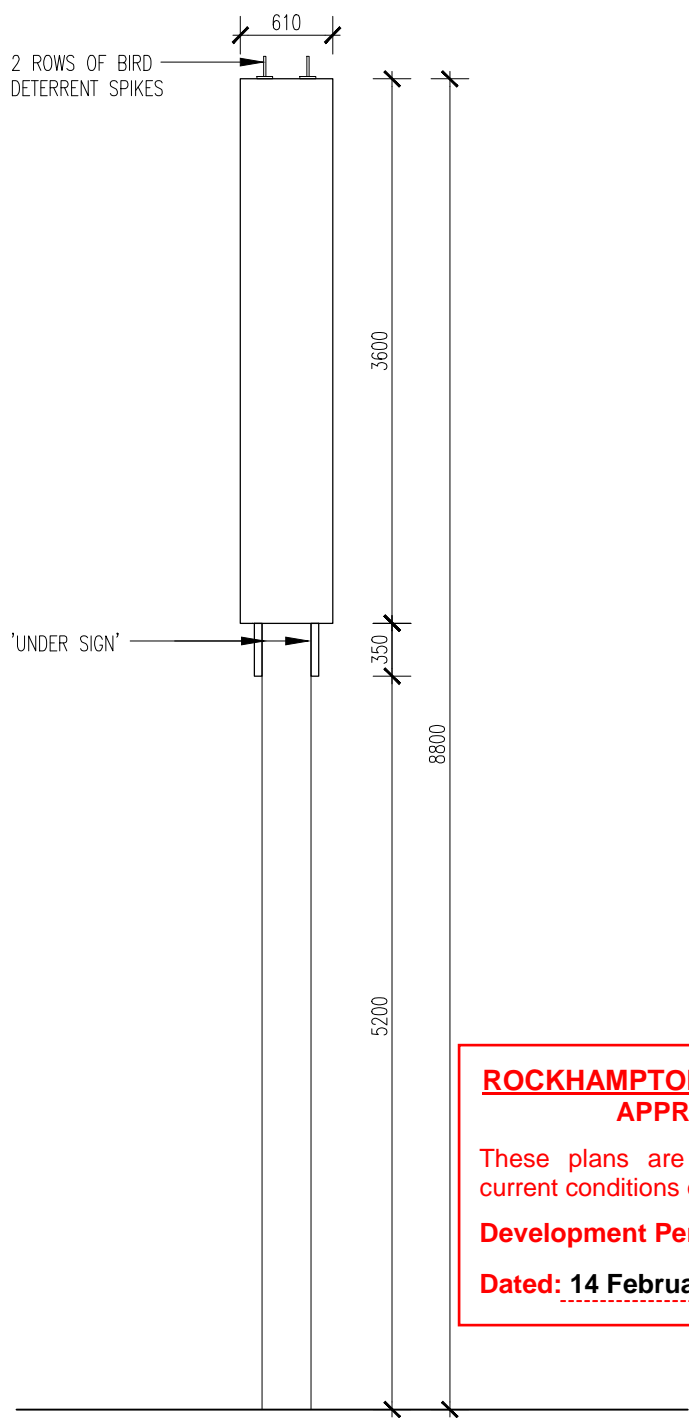
Drawing Title  
**CONSTRUCTION DETAIL  
TOWER SIGNAGE  
DETAILS**

Drawing Number  
**QLD-G5-A3-746**

Revision  
**T1**



1 LARGE SIGN - ELEVATION 1  
LARGE SINGLE POLE CARPARK ENTRY SIGN 1:50  
F-P1



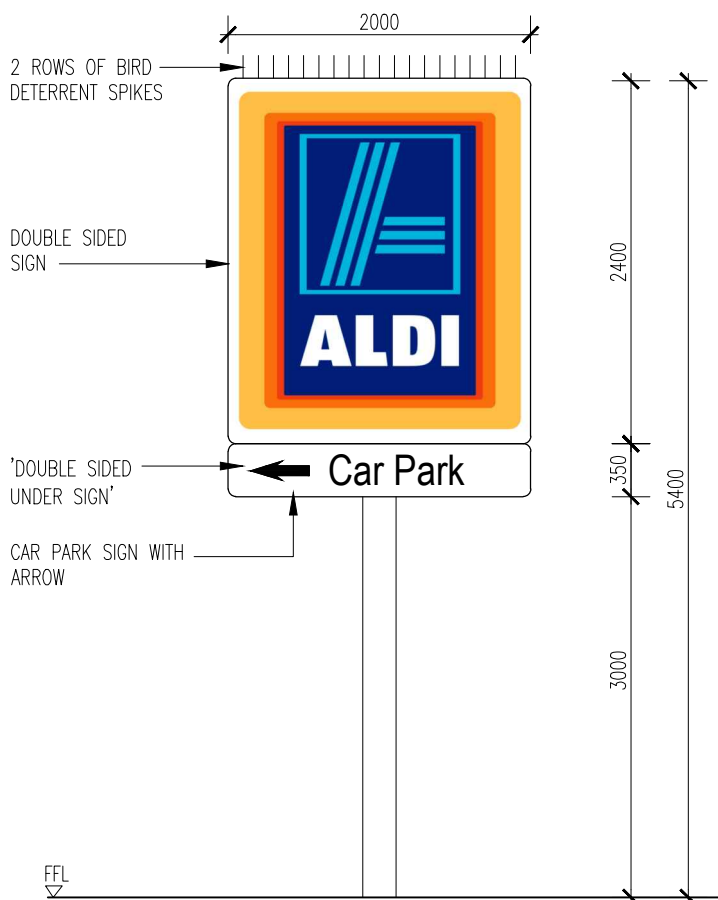
2 LARGE SIGN - ELEVATION 2  
LARGE SINGLE POLE CARPARK ENTRY SIGN 1:50  
F-P1

**ROCKHAMPTON REGIONAL COUNCIL**  
**APPROVED PLANS**

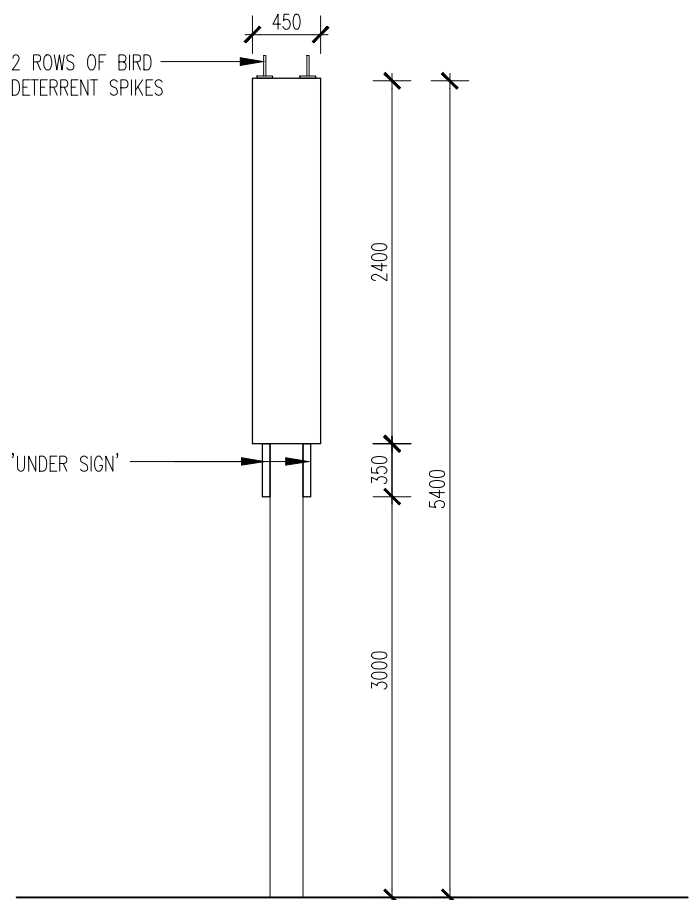
These plans are approved subject to the current conditions of approval associated with

**Development Permit No: D/100-2017**

**Dated: 14 February 2018**



3 SIGN TYPE 4 - ELEVATION 1  
SINGLE POLE CARPARK ENTRY SIGN 1:50  
P2SP



4 SIGN TYPE 4 - ELEVATION 2  
SINGLE POLE CARPARK ENTRY SIGN 1:50  
P2SP

NOTES:

- ALL SIGNAGE BY ALDI SEPERATE CONTRACTOR
- BIRD DETERRANT SPIKES BY ALDI SEPERATE CONTRACTOR

THIS DRAWING AND DESIGN IS SUBJECT TO COPYRIGHT AND MAY NOT BE REPRODUCED WITHOUT PRIOR WRITTEN CONSENT. DETAIL DRAWINGS ARE TO BE TAKEN IN PREFERENCE TO MORE GENERAL DRAWINGS. ALL DIMENSIONS TO BE VERIFIED PRIOR TO COMMENCEMENT OF ANY WORK. ANY DISCREPANCIES TO BE REFERRED TO THE ARCHITECT. USE FIGURED DIMENSIONS ONLY.

**LEFFLER SIMES ARCHITECTS**

7 Young St, Neutral Bay  
Sydney NSW 2089  
P +61 2 9909 3344  
F +61 2 9909 3828  
W [www.lefflersimes.com.au](http://www.lefflersimes.com.au)  
ACN 001 043 992

Level 2, 18 Oliver Lane  
Melbourne Vic 3000  
P +61 3 9654 6344  
F +61 3 9654 8244  
E [sje@lefflersimes.com.au](mailto:sje@lefflersimes.com.au)  
ABN 39 001 043 992

2 / 290 Boundary Street  
Spring Hill Qld 4000  
P +61 7 3123 5544  
F +61 7 3831 9860  
E [jar@lefflersimes.com.au](mailto:jar@lefflersimes.com.au)

Client  
**ALDI STORES**  
**(A LIMITED PARTNERSHIP)**

Project  
**ALDI FOOD STORE**  
**143-167 GLADSTONE ROAD**  
**ROCKHAMPTON, QLD 4700**

T1	FOR TENDER		25/07/17
NO	REVISION		DATE
Date	Drawn	Checked	Scale
JAN 2017	KEA	CAC	1:50
Job Number			
4140			

Drawing Title  
**ALDI SIGNS**  
**LARGE SIGN & TYPE 4**

Drawing Number  
**QLD-G5-A3-851**

Revision  
**T1**





### Optional Undersign

Refer to Section 3.4 for additional options on wording.



Front Elevation  
Scale 1 : 50

Side Elevation

### DESCRIPTION

5.4m double sided illuminated flexface pylon sign.

### SIGN CASE

Size: 2000(w) x 2400(h) x 503mm(d) with 100mm radius corners.  
Optional - 2 off Undersigns 2000(w) x 350(h) with 50mm rad. corners  
Construction: DIR-512 (supplier DIRECT ALUMINIUM PTY. LTD.) or similar 320mm aluminium extrusion signbox with internal fabricated steel frame.  
Undersigns: 100mm aluminium channel extrusion.  
Paint finish (external): Dulux Olde Pewter 50243 70% GLOSS in 2 pack polyurethane OR powdercoat FP 964.  
Paint finish (internal): Flat White.

### FACE

System: DIR-838 or DIR-34786 & 34772 braced frame with fabricated 50x120x2 angle cover trims.  
Material: Flexface - Halifax Vogel SEEMEE IV grade or approved equivalent (such as 3M Panaflex or Signtech WF500MP) *contact Signmanager for confirmation*  
Graphics: ALDI logo as per corporate standard - Refer Section 03.  
**N.B. SCREENPRINTED VINYL GRAPHIC DECAL SUPPLIED BY SIGNMANAGER**  
Undersigns: Front applied vinyl graphics on opal acrylic faces.

### ILLUMINATION

Internal illumination: "Daylight" Triphosphor fluorescent tubes spaced evenly.  
Light output: Calvin - 40000, Lumins - 16500.

### PYLON

Size: 219Øx6.4mm CHS x 3200mm long, 40mm base plate. HD galv.  
Paint finish: Dulux Olde Pewter 50243 70% GLOSS in 2 pack polyurethane OR powdercoat FP 964.  
Sign contractor to supply & fit Clipsal WHA isolator switch & paint unit olde pewter to match post

### FOOTING

600mm diameter bored pier footing as standard. Galvanised HD bolts.

### INSTALLATION (Builder Responsibilities)

- Aldi Builder to dig, install footing cage, and pour sign footings a minimum of 2 weeks prior to pole erection.

### INSTALLATION (Sign Contractor Responsibilities)

- Sign contractor is to manufacture and issue footing cage to builder complete with location template which clearly shows base plate orientation. Refer to 7.2 for cage details & 7.3 for base plate and sign orientation details.  
- Sign contractor to erect pole and signage onto footing.

### ADDITIONAL

Two rows of 'Bird.B.Gone BBG2001-5' stainless steel and plastic bird deterrent spikes to be adhesive fixed to top of sign.  
Supplier GARRARDS PTY. LTD.

### ROCKHAMPTON REGIONAL COUNCIL APPROVED PLANS

These plans are approved subject to the current conditions of approval associated with

Development Permit No: D/100-2017

Dated: 14 February 2018

