



What you need to know

This project is proudly supported by



Queensland
Government



FIRSTLY, THANK YOU

Rockhampton Regional Council would like to say a very big thank you for your participation in our Region's organic bin trial.

This booklet has been put together for you and your household and provides all the information you need to know about using your new service.

Your neighbourhood has been selected to trial a garden organics (GO) bin service. The maps in this booklet show you who else is doing the GO trial with you.



You can find more information on our website. Simply scan the QR code below to be taken to our dedicated FOGO page, or head to www.rrc.qld.gov.au/fogo.

BINS and COLLECTIONS

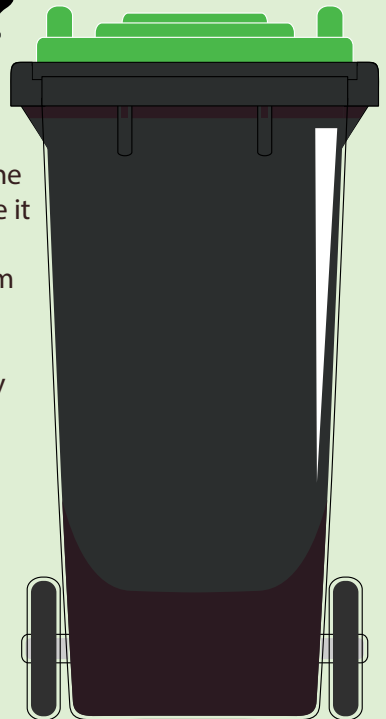
Your new organics bin (lime green lid):

Your new organics bin will be a 240 litre bin, same size as your existing kerbside bins. It will be easily distinguishable from your other household bins by its lime green lid.

Your GO bin will be collected fortnightly on your normal collection day, and will alternate with your recycling (yellow lid) bin service. Your general waste bin will continue to be a weekly service on your normal collection day.

SO, WHAT'S THE GO?

In a nutshell, there's a lot of organic waste currently going to landfill and that's not the best place for it. If we can instead separate it and turn it into compost, we will significantly reduce carbon emissions from landfill, provide valuable benefits to our local agricultural sector and be able to deliver future kerbside services at the very lowest cost to ratepayers



WHAT GOES IN the GO BIN?

GO stands for Garden Organics.
This service is for garden waste only.

This includes:

- Grass clippings
- Garden weeds
- Fallen fruit
- Flowers
- Light pruning
- Bark chip
- Twigs
- Branches - up to 10cm in diameter
- Palm fronds - cut to fit into your bin

Please ensure that you don't use the GO bin for soil, rocks, treated timber, building waste, tree stumps, animal droppings, terracotta and plastic pots, soil bags, plant tags, string and hoses and garbage.

Other than fallen fruit, this service does not accept food waste.

Please also do not dispose of plastic bags or biodegradable liners.



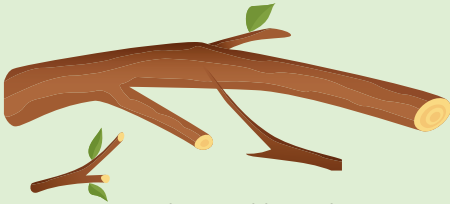
NO plastic bags



Light
pruning



Fallen fruit



Chopped branches



Flowers



Palm fronds



Twigs

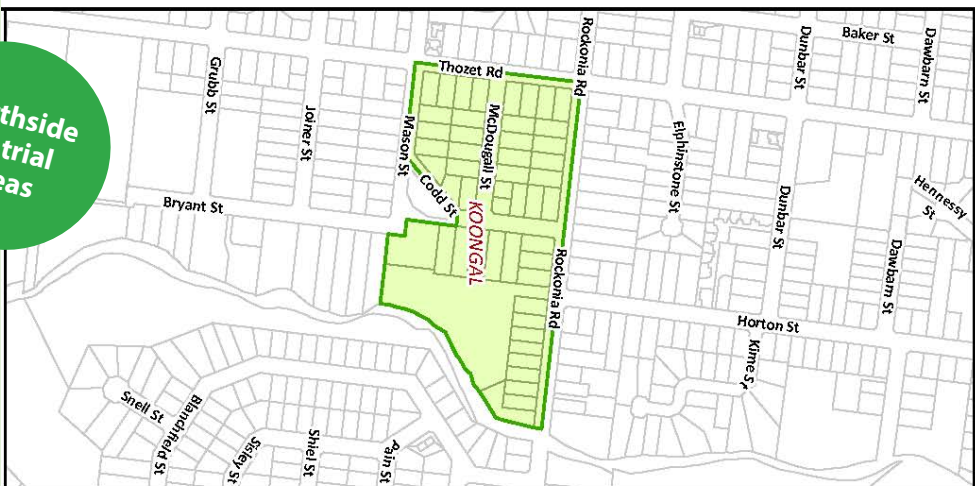
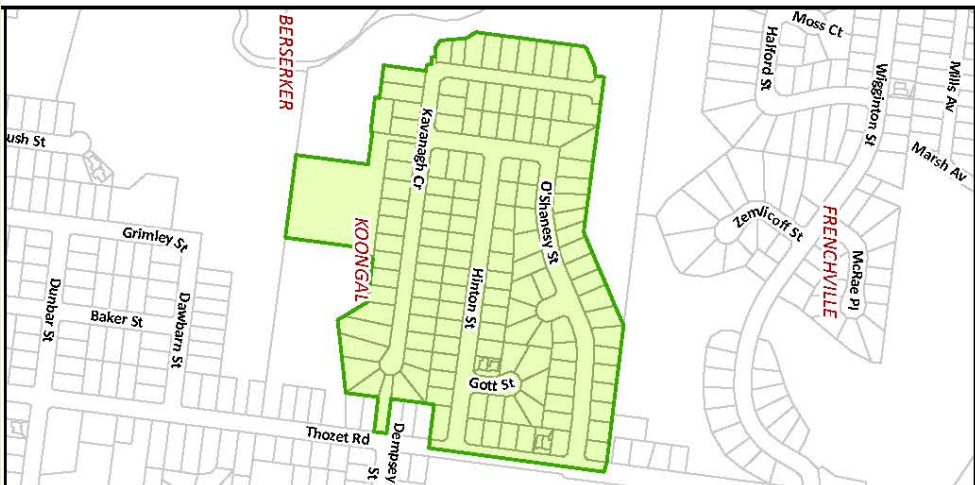


Grass clippings



Bark chip





Northside
GO trial
areas

FREQUENTLY asked QUESTIONS

I don't need a garden organics bin as I already compost garden waste?

Excellent! Thank you for doing this – please keep doing it!

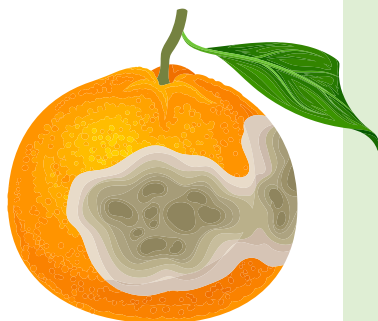
However, if you are still continuing to place some of your organic waste that is not suitable for composting in your general waste bin then your GO bin can actually complement your backyard composting - helping you to divert ALL your organic material away from landfill and making sure none of this valuable resource goes to waste.

Can I put weeds into my organics bin?

Yes. All common garden weeds can be put into your GO bin. The materials are composted at a temperature sufficient to kill off any germinating seeds.

Can I put processed timber into my organics bin?

No. Treated timber is not accepted in the bin as it contains chemicals and adhesives that contaminate compost.





This project is proudly supported by



Queensland
Government

