

ON THE ROAD TO RESTORATION

July, 2016 Newsletter

Pilbeam Drive, Mount Archer

Welcome to July's overview of progress made on the Pilbeam Drive Remediation Works.

This newsletter is provided to keep you up to date throughout the progress of the works.



Site 9

A service road was created to access the new catch drain at site 9. This will be used for maintenance to remove debris and silt. Installation of two new drainage pipes at site 9 as part of the catch drain construction has been completed.

Site 22

The major works are now completed at Site 22. Traffic management will remain in place while some road work occurs to finalise the remediation of this area.

Work on remaining landslips

Landslip Site 19

Area reduced to one lane traffic whilst work is undertaken. Construction will commence once geotechnical assessment and remediation design has been finalised.

Landslip Site 23, 24, 25

Construction to commence in the next one to two weeks.

Remaining slips and road defects

Works on the remaining slips across the entire site will now commence.

Works on minor defect sites include debris clearing, realignment of pipe, and minor excavation to prepare the remaining sites for upcoming pavement repairs.

Speed limits in works areas

With works on the defect areas occurring, there will be additional traffic management in place. Please refer to the map over page for current areas. *Please note that the speed limit in the traffic management areas is 20km.*



Challenge the Mountain

Council and EarthTec received a request from the Challenge the Mountain event coordinators to allow participants access to Pilbeam Drive on Sunday mornings. Up until the event on August 27, runners and cyclists will be accessing Pilbeam Drive for training purposes. Your ongoing patience is appreciated.

Change to Pin Code Access for Mount Archer residents

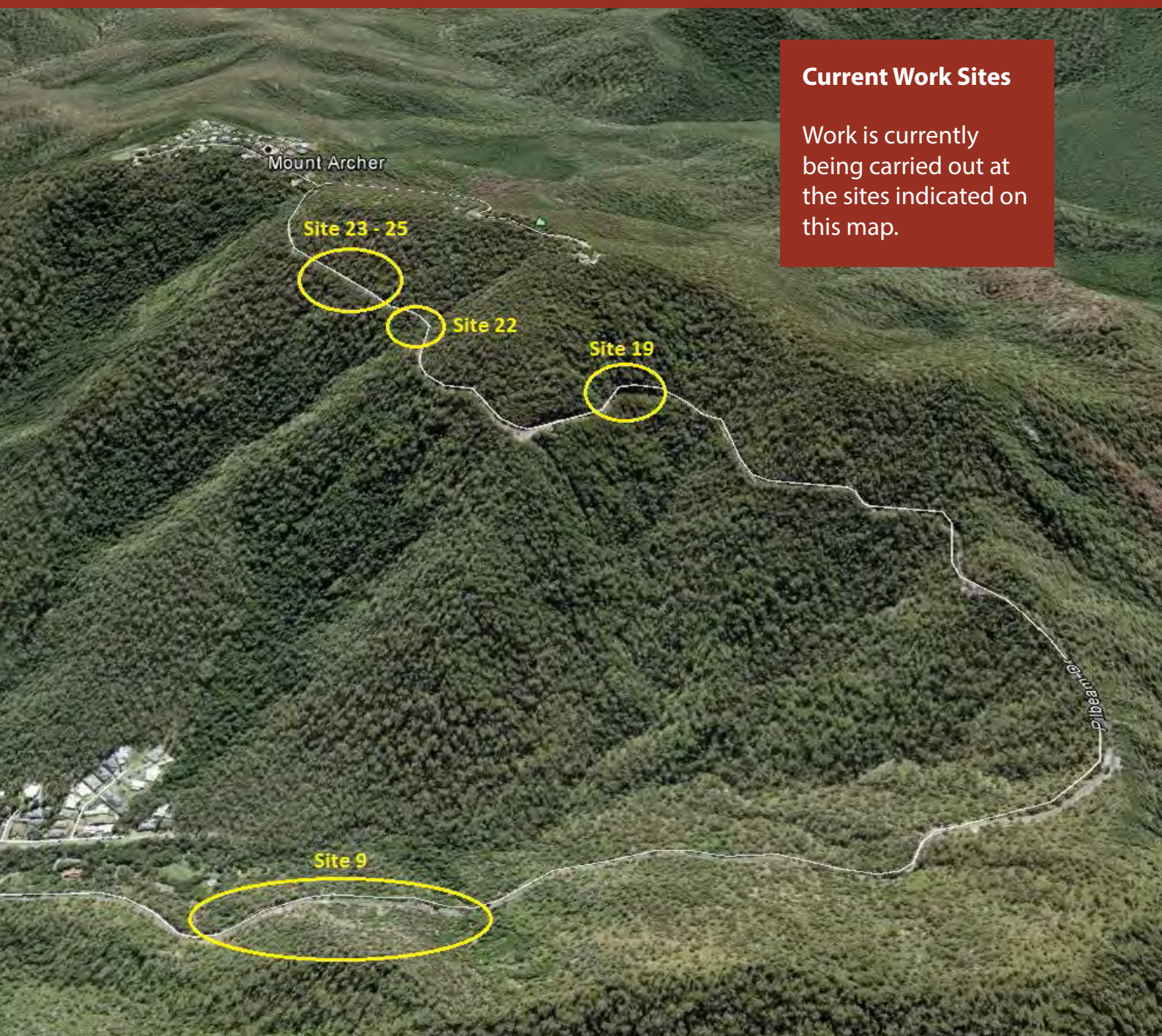
Residents of Mount Archer please note that the pin code to access Pilbeam Drive will be changed on Sunday, 31 July 2016. Please refer to your direct correspondence for the updated pin code.



Pilbeam Drive Traffic Management Areas

Some information to assist with traffic lights on Pilbeam Drive:

- To reduce the wait times at temporary traffic lights, all traffic lights have had their green light times reduced to 10 secs. This reduces the likelihood of arriving on a green light, but will mean there is a shorter total cycle time and therefore less time to wait for the next green light.
- Red light times have also been shortened and vary at each traffic light set. These times are based on the time for a vehicle to travel through the specific site at the 20km/h reduced speed limit.
- Occasionally if slow moving construction vehicles are travelling through the site, traffic travelling in the opposite direction may meet these vehicles on a green light. At all times, please obey the 20km/h speed limit and use caution when travelling through each construction site.



Current Work Sites

Work is currently being carried out at the sites indicated on this map.