

# Community Conversations

*Gracemere and  
surrounding areas*



# House Keeping

Apologies

Councillors in attendance

Council Officers in attendance

Mobile phones

One person speaking at a time

We'll need to take your details for any requests for service

Toilets

# Agenda

1. Divisional Councillor – Welcome
2. Regional Services Update
3. Communities Update
4. Advance Rockhampton Update
5. Open Discussion / Questions
6. 2018 Resident Satisfaction and Importance Survey

# Welcome

**Mayor Margaret Strelow and  
Councillor Ellen Smith**



# Regional Services

- Rural Roads – How are they assessed
- Works Completed
- Works In Progress
- Planned Work

# Rural Roads – How are they assessed

The screenshot displays a road assessment software interface. The main window shows a video feed of a dirt road in a rural setting. The interface includes a top navigation bar with icons for navigation and settings. The right sidebar contains a 'Record Mode' section with a 'Road Width' dropdown set to 6.0, a 'Marks' table, and a map view. The bottom section features a 'Graph Display' with a line graph showing road condition data, a 'Table' with road details, and a 'Tools' section with buttons for 'A/B Change', 'Config', 'Collab', 'Save', 'Open', and 'Tools'.

Mark	Mark Types	Tags	Width
Mark M1			
Mark M2			
Mark M3			
Mark M4			

POI - Make changes while in Recording mode.

Zoom -

Normal Google Map

Order Roads By: Graph Display Overlay Smooth

Road Name: IRI

Select Road: BOB'S CREEK ROAD - 18-02-22 - 1031

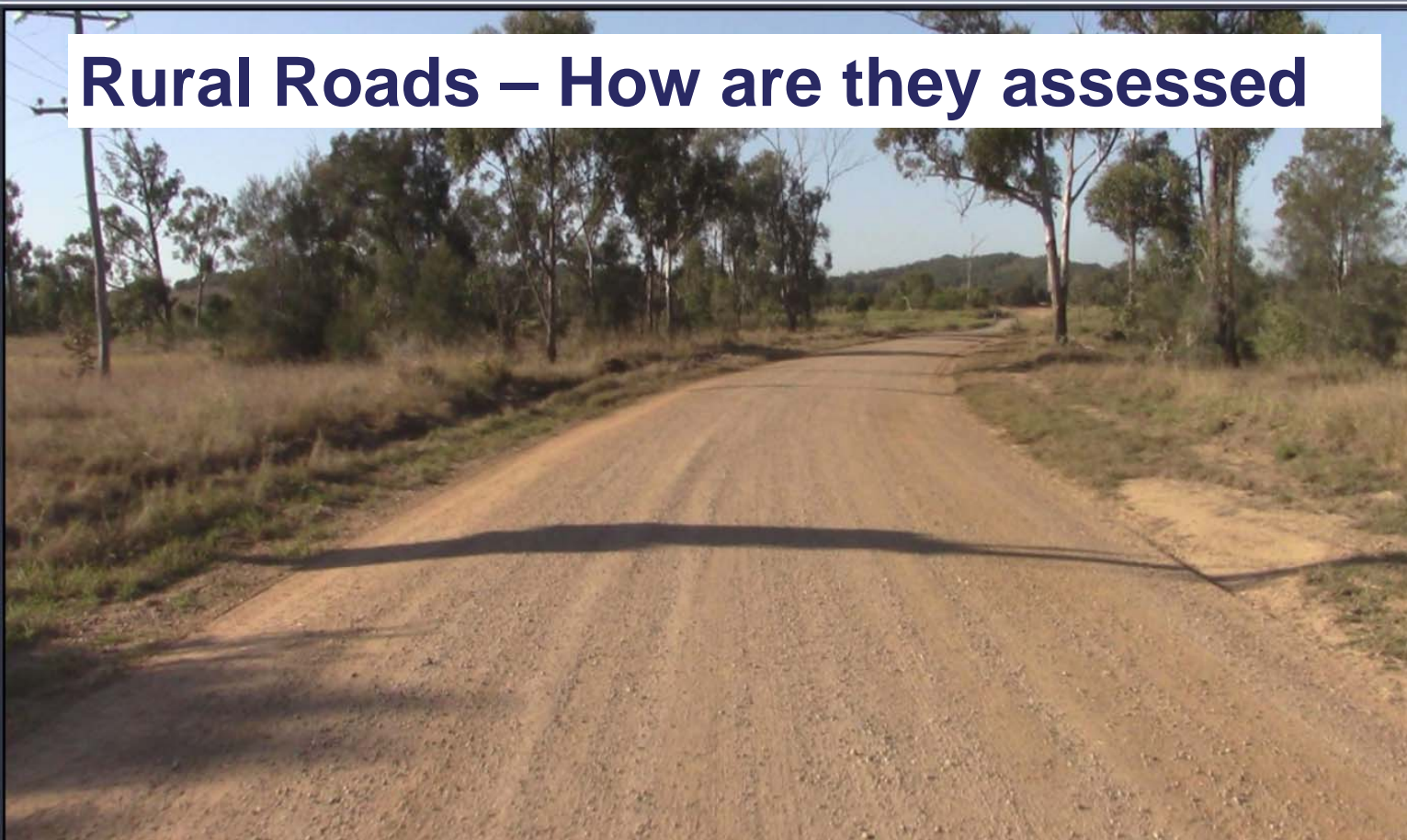
Offset: ☒ Graded: ☐

Your Chainage: 0 m	GPS Chainage: 9 m	IRI: 2.994115
Sealed Avg. IRI: 3.9581	Gravel Avg. IRI: 6.2140	LONG: 150.570157
Unsealed	LAT: -23.554423	Photo_2018_Feb_22_10_35

Version 5.3.3.0 by Shepherd Services

Clear Memory (For slow computers)

# Rural Roads – How are they assessed



**Record Mode**

Road Width: 6.0

Marks

Mark	Mark Types	Tags	Width
Mark M1			
Mark M2			
Mark M3			
Mark M4			

POI - Make changes while in Recording mode.

Zoom -

Normal Google Map

Mark A/B

Next High IRI

Next Mark

Next POI

Edit Asset # / Hierarchy

Next Sealed / Gravel

Order Roads By: Graph Display

Road Name: IRI

North Langmorn Road - 17-08-03 - 174

Photo\_2017\_Aug\_03\_08\_21\_50\_687.jpg

Go

Your Chainage: 0 m

GPS Chainage: 66 m

IRI: 4.341586

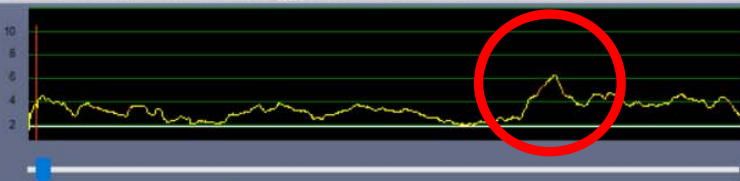
Sealed

Sealed Avg. IRI: 3.5119

Gravel Avg. IRI: 0.0000

LONG: 150.735853

LAT: -23.687895



A/B Operation Change

Config

Auto

Save

Open

Tools





Works completed

## Cherryfield Road

Bitumen layed between Reigal Drive and Ashford Street





Works completed

**Gregory Street**

Bitumen seal





Works completed

## Kabra-Scrubby Creek Road

Bitumen seal



# Works completed



## Neerkol Road, Stanwell

Underground drainage





# Works completed

## Old Gracemere Road

Graded shoulders and widen bitumen seal





# Works completed

**Brooks Street**  
Drainage





# Works completed

## Johnson Road

Footpath



Works  
completed

**Fisher Street**

Footpath

# Works being completed – Grading

## Completed:

Goodwin Road	2.8km
Halfpenny Road	2.8km
Murphy Road	4.0km
Kabralea Road	1.6km
E Williams Road	3.0km
Moore Road	800m
Stanley Road	800m

# Works being completed – Floodways

Nine Mile Road

\$513,000

# Works being completed – Reseals

## Completed:

Allen Road	510m	\$14,000
Johnson Road (both lanes)	530m	\$165,000

## Planned:

Johnson Road (inbound)	190m	\$37,000
Johnson Road (outbound)	420m	\$81,000

# Works being completed – New Seals

Griffith Street, Stanwell

580m

\$120,000

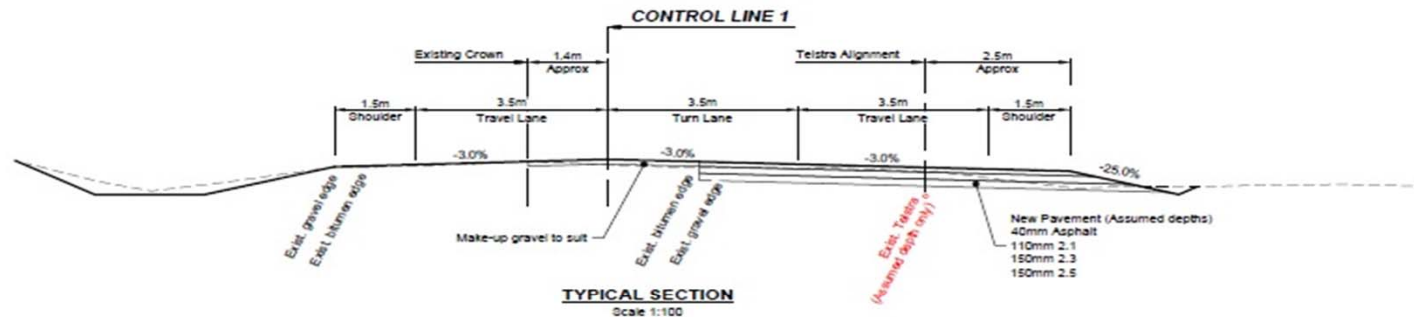
# Works being completed – Footpaths

Gracemere CBD upgrade

100m

\$480,000

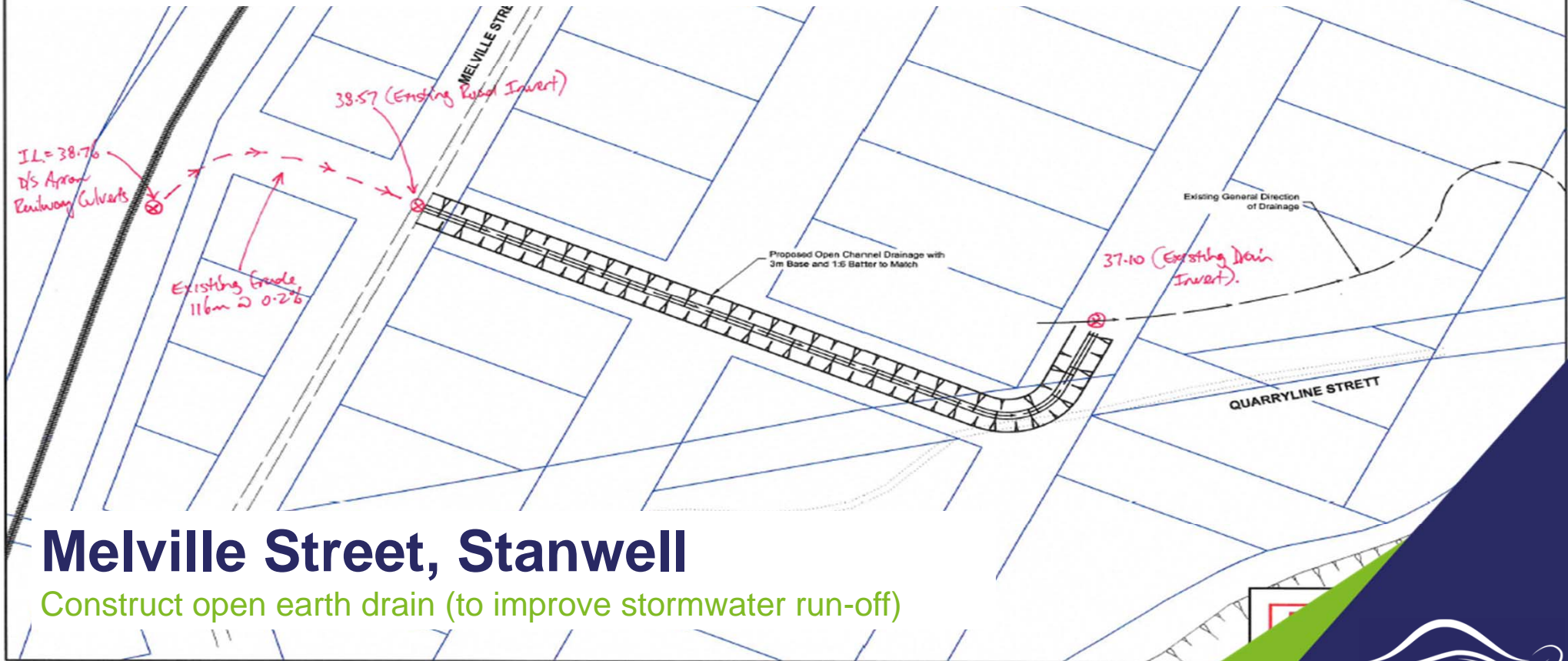




# Future Proposed Project



# Future Proposed Project



## Melville Street, Stanwell

Construct open earth drain (to improve stormwater run-off)

Surveyed Ref Mark Datum Zone MREF Ass. Plans	Setts R.L. 1985 Vert. Survey Book 1:1500 PLAN SCALE FULL SIZE A3	AMENDMENTS DESCRIPTION DRAWN APPROD DATE	Designed Checked Examined Recomm.	MAN AUG '17	APPROVAL RPEQ No. DATE MANAGER ENGINEERING SERVICES
		Original Issue MAN			

# Communities

- **Works Completed**
- **Works In Progress**
- **Planned Work**



# Works completed

## Cedric Archer Park

Water play area

# Works completed



## Cedric Archer Park

Water play infrastructure



Works completed



## Cedric Archer Park

Hans Christian Anderson theme

# Works completed



## Cedric Archer Park

Play equipment



# Works completed



## Animal Management Centre

Improved animal management facilities including suitable and secure staff facilities







Works completed

## Ashes Garden

Beautiful addition to the Gracemere Cemetery



# Works completed



## Ranger Road

Streetscape work

*Rockhampton*  
Regional Council



# Works completed



## Bill Birch Park

Renewed playground

*Rockhampton*  
Regional Council



Works completed



## Springers Lagoon Redevelopment

Car Park



# Works being completed



## Touch of Paradise

Map



# Works being completed



## Touch of Paradise

Construction in progress





Works being completed

## Gracemere Cemetery Expansion

Concept perspective plan





# Gracemere Cemetery Expansion

Concept master plan





# ADVANCE

**WELCOME TO THE  
ECONOMIC HEART OF  
CENTRAL QUEENSLAND  
AND THE GATEWAY  
TO NORTHERN AUSTRALIA**

*Rockhampton  
Region*

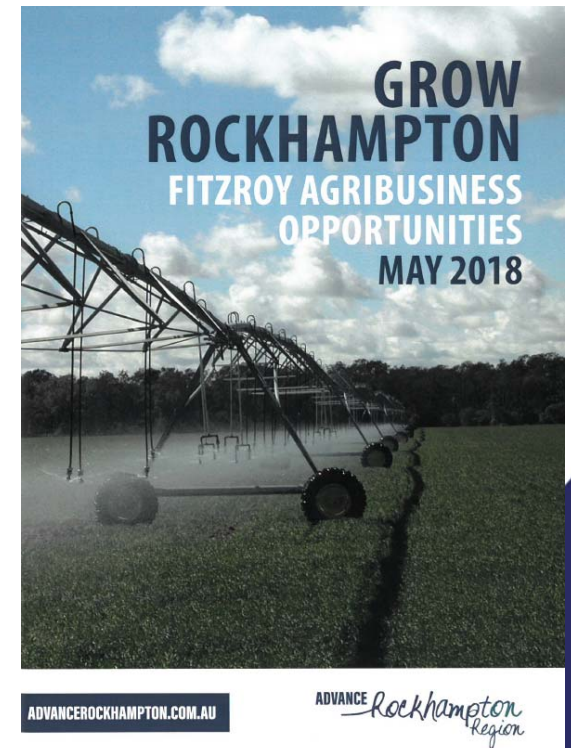


**ADVANCEROCKHAMPTON.COM.AU**

# The Region is the economic heart of Central Queensland

## Things are looking positive...

- Resources – The Bowen Basin is creating employment opportunities and attraction to live in the Region.
- Water Security Agribusiness – Rookwood Weir commitment, Grow Rockhampton and Aquaculture.
- Defence – pending \$1B announcement for Shoalwater Bay, \$130M already committed.
- CBD Development – Council moving forward on significant developments.
- Tourism and Events – Growth of Sports/Eco Tourism.
- International Relations & Trade.



# Open Discussion / Questions



# Resident Satisfaction and Importance Survey

# Thank you for your time