



**Norman Gardens / Frenchville
and surrounding areas**



HOUSEKEEPING

Apologies

Councillors in attendance

Council Officers in attendance

Mobile phones

One person speaking at a time

We'll need to take your details for any requests for service

Toilets



AGENDA

1. Divisional Councillor – Welcome
2. Regional Services Update
3. Major Projects
4. Advance Rockhampton – Economic Action Plan Update
5. Open floor



Welcome Cr Rose Swadling



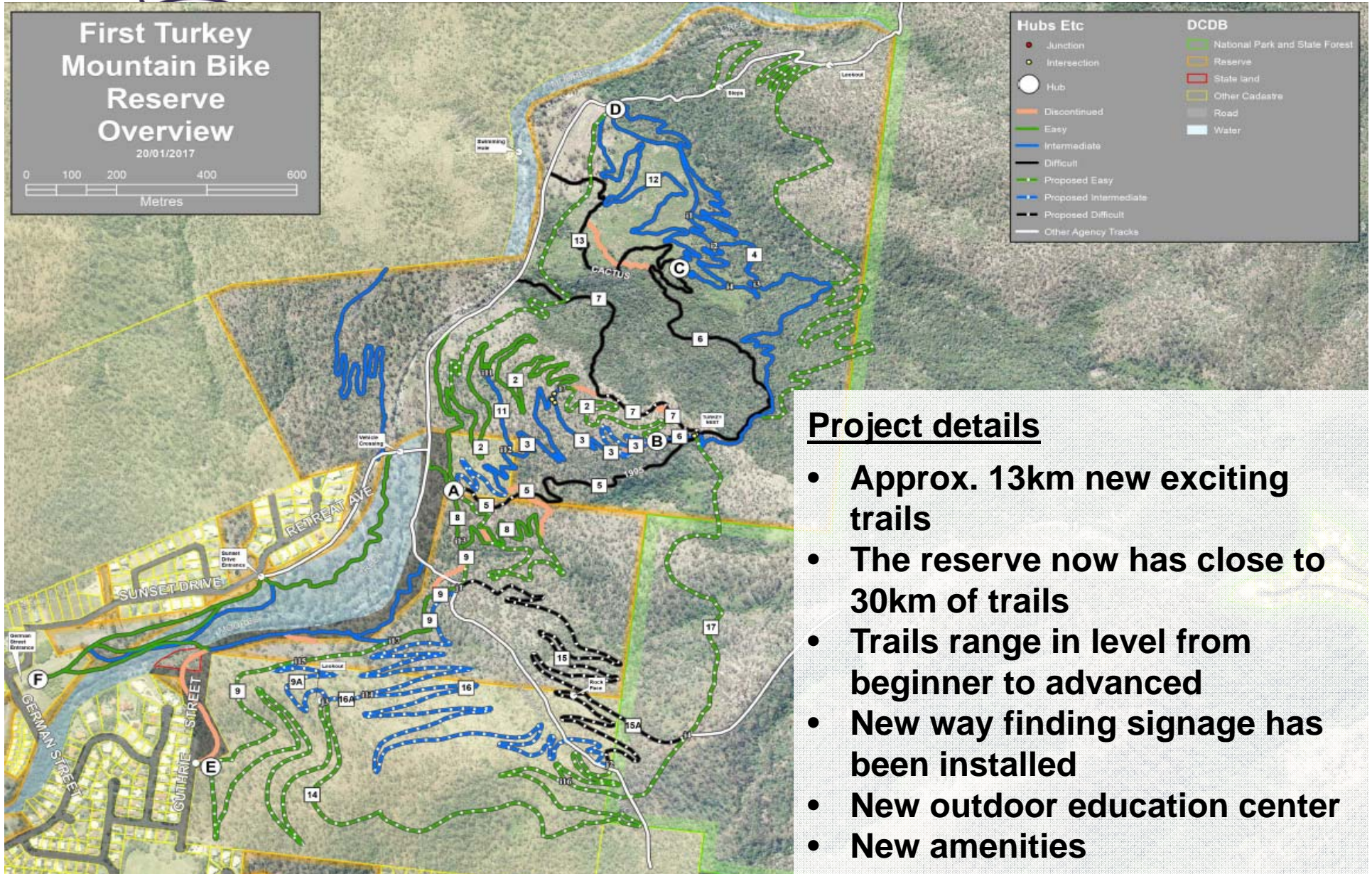
Regional Services

Achievements, Works In Progress and Planned Works



Major Projects

First Turkey Mountain Bike Reserve



Project details

- Approx. 13km new exciting trails
- The reserve now has close to 30km of trails
- Trails range in level from beginner to advanced
- New way finding signage has been installed
- New outdoor education center
- New amenities

First Turkey Mountain Bike Reserve





First Turkey Mountain Bike Reserve





Mount Archer Activation – Nurrim Walk

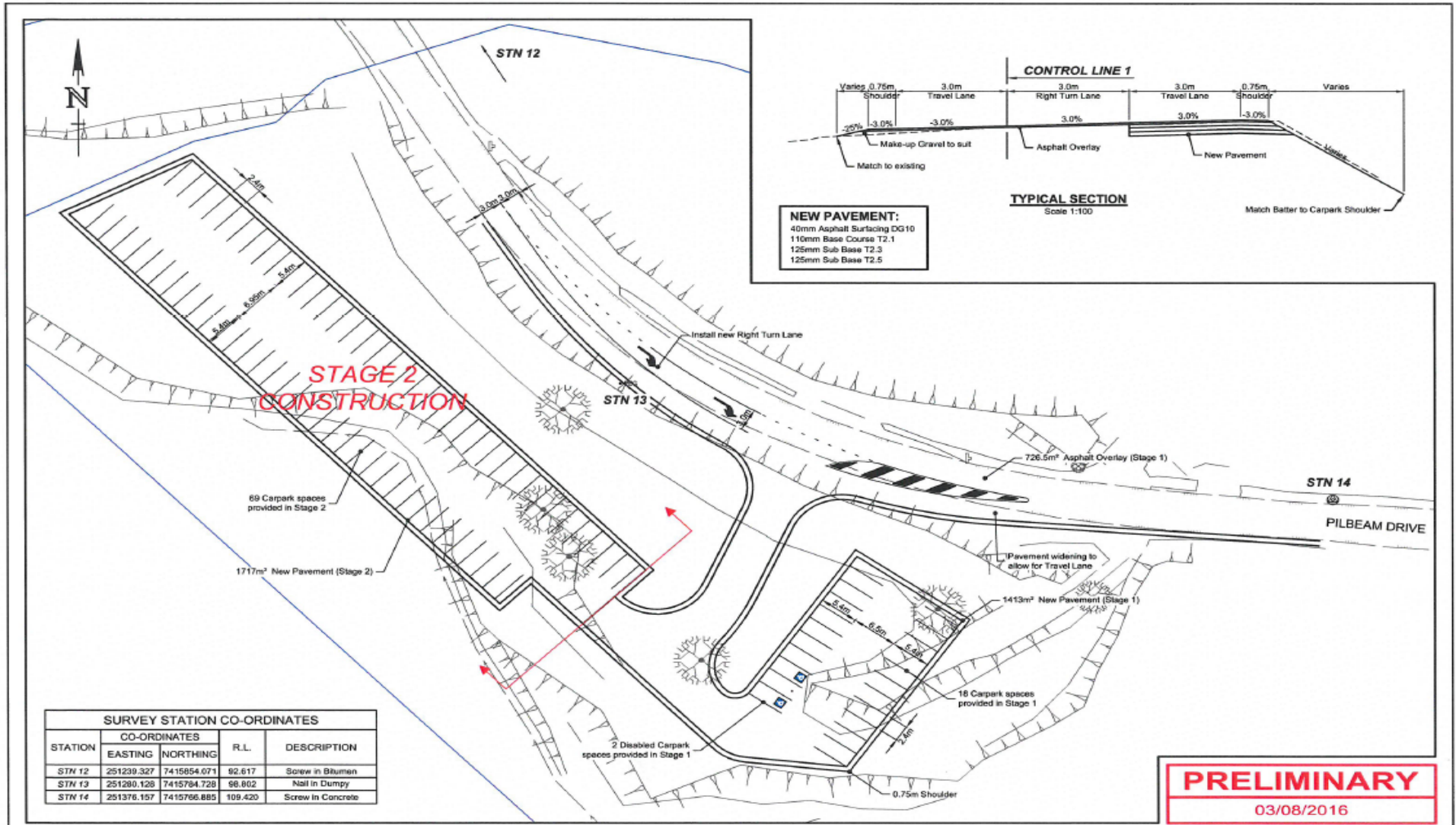




Mount Archer Activation – Nurrim Walk



Pilbeam Drive Car park Stage 1



Surveyed: MGR Date: DEC '15
 Ref: Mark: STN 10 R.L. 91.429
 Datum: Horiz: GDA 84 Vert: AHD
 Zone: 58 Survey Book: MGR 05
 File Ref: 2016-087-01.dwg
 XREF: 2016-087-00.dwg
 App: PHMS

0 5 10m 1:500
 Plan
 FULL A3
 SIZE A3
 Original base

AMENDMENTS DESCRIPTION	APPRD	DATE



Designed: ARM JAN 16
 Checked:
 Examined:
 Recomm:
 APPROVAL: _____
 RPEQ No: _____ DATE: _____
 MANAGER ENGINEERING SERVICES

PILBEAM DRIVE
 FRENCHVILLE RD TO END (FRENCHVILLE)
 ROADWORKS CONSTRUCTION
 OVERALL LAYOUT, TYPICAL SECTION & DETAILS

2016-087-01
 Sheet No. 1 of 14
 Job No: C.1057462
 A



Swadling Park Amenities



42nd Battalion Pool – Waterslides



42nd Battalion Pool – Waterslides





North Rockhampton Flood Mitigation





Rockhampton
recreational fishing
development strategy

FOCUS ON IMPROVING LIFESTYLE AND TOURISM



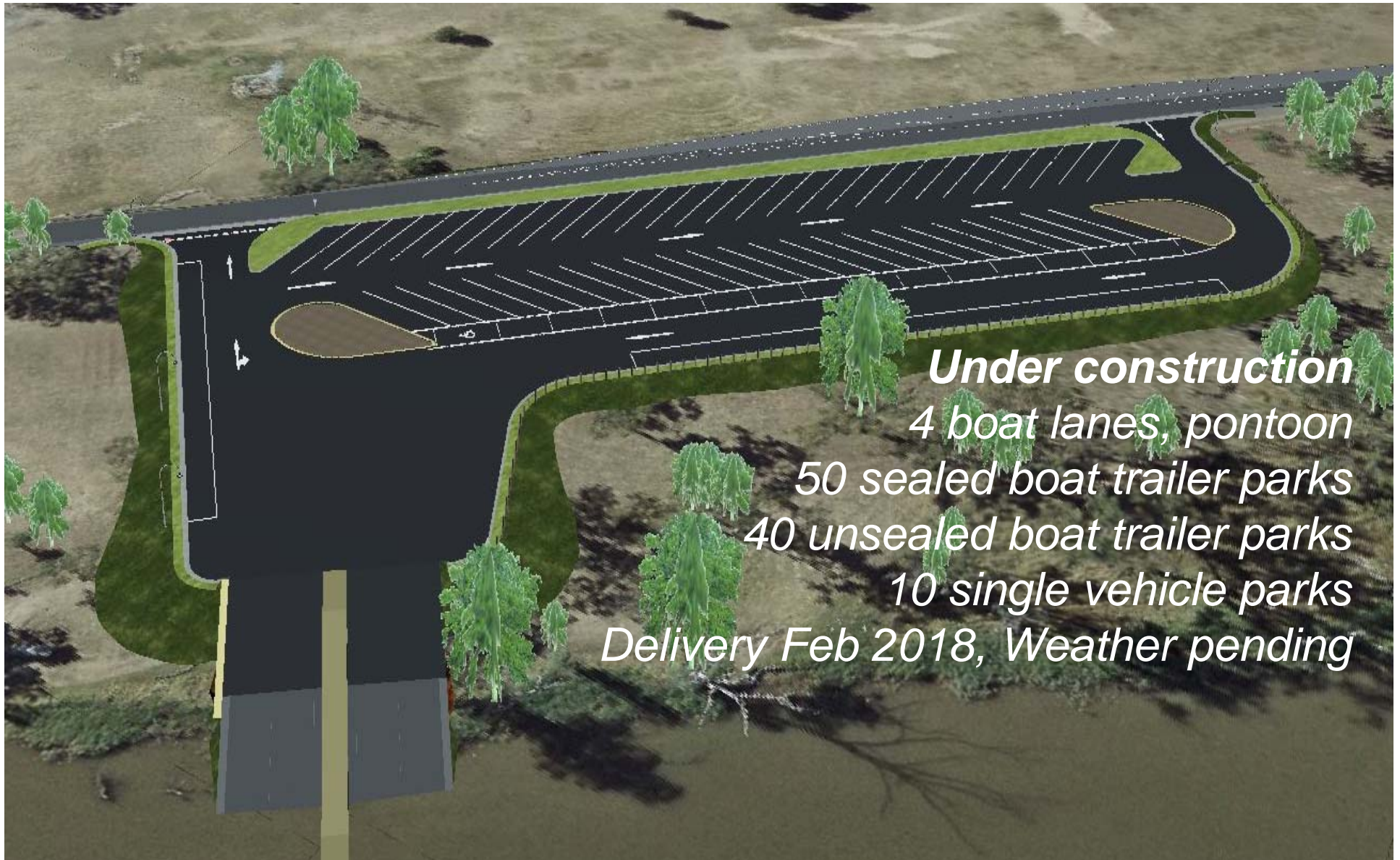


Barra Bounty 2017





North Rockhampton Boat Ramp



Under construction
4 boat lanes, pontoon
50 sealed boat trailer parks
40 unsealed boat trailer parks
10 single vehicle parks
Delivery Feb 2018, Weather pending



Frenchville Road Traffic Improvements

PLACE IN INFO FROM STATE CANDIDATES BOOKLET

Rockhampton Supercar proposal



Rockhampton Supercar Site Selection

ADVANCE *Rockhampton*
Region

Rockhampton
Regional Council

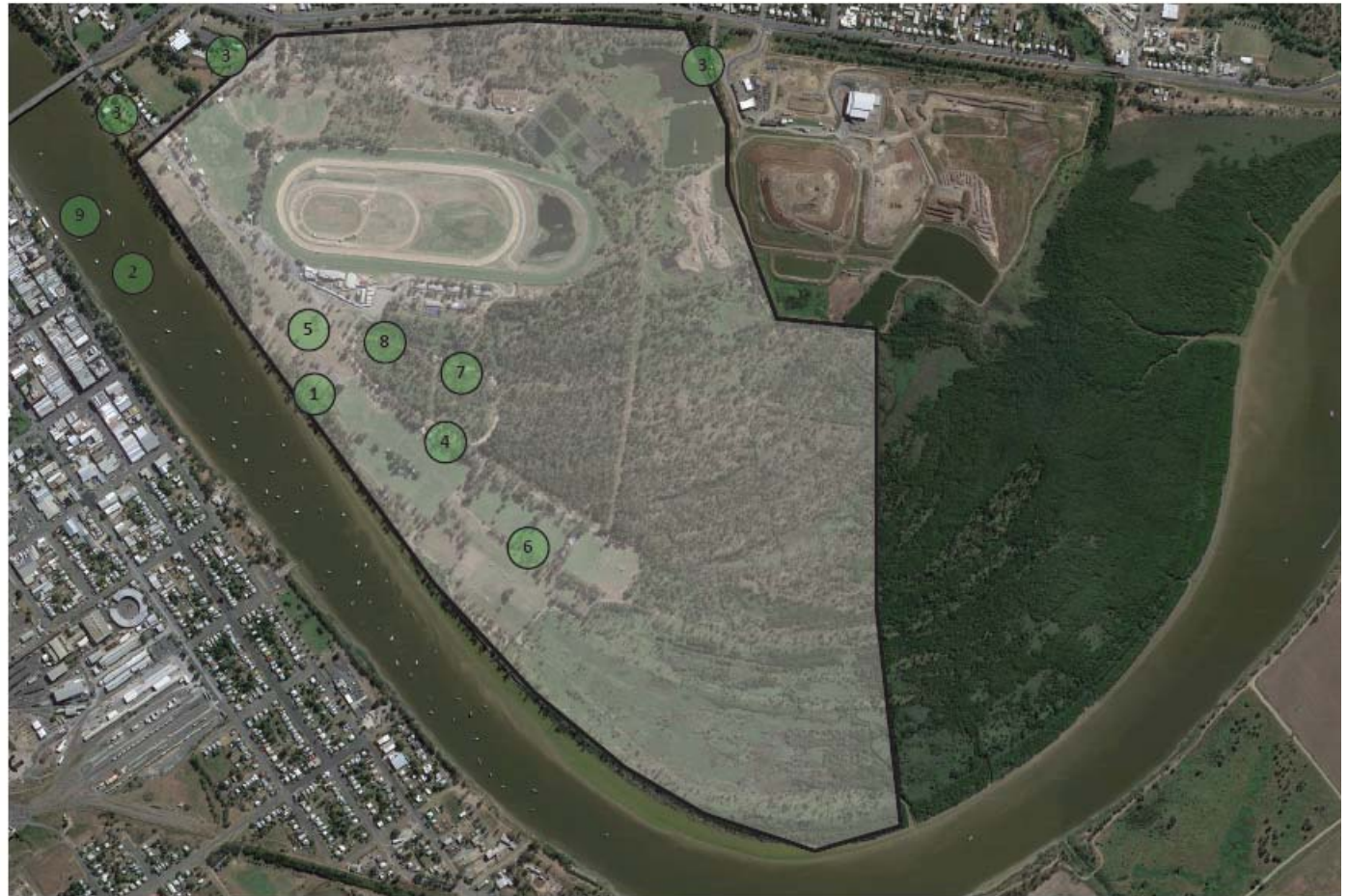
5
SUPERCARS
CHAMPIONSHIP
australia

NORBRIDGE PARK

RRC Supercar Site Selection

OPPORTUNITIES

- ① Riverside setting and park character
 - ② Close proximity to (but separation from) CBD
 - ③ Multiple access options
 - ④ Potential integration and upgrading of existing facilities and structures including roads
 - ⑤ Potential to value-add to existing facilities (indoor and outdoor)
 - ⑥ Multiple circuit layout options
 - ⑦ Extensive open space allows for multiple overlay opportunities
 - ⑧ Existing facilities (Jockey Club) can provide support facilities for first 'temporary' event
 - ⑨ Potential marine/marina ferry (from CBD) access
- Options of alignment of main straights to capture hero photos of vistas to CBD (Quay Street) and Mount Archer
 - Flexibility for circuit to be temporary or permanent
 - No direct impact on city streets
 - Event doesn't impact on businesses



○

ADVANCE *Rockhampton*
Region

Rockhampton
Regional Council





Economic and Regional Development

ADVANCE



Advance Rockhampton

Economic Action Plan

Our aim is for the Region to be the economic heart of Central Queensland

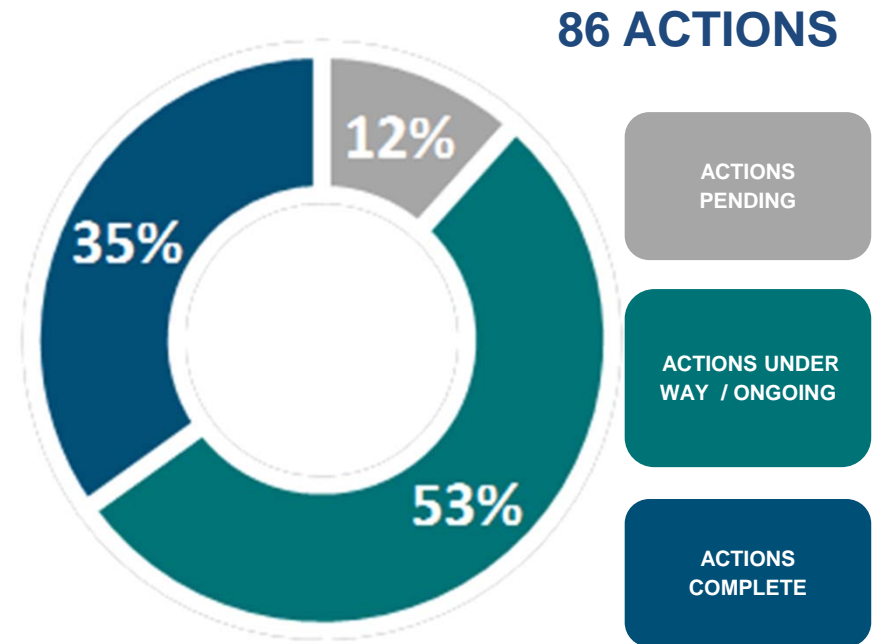
To achieve this the Advance Rockhampton team is working towards outcomes in these areas:

- Resources
- Water Security and Agribusiness
- Health Care & Social Assistance
- Defence
- Smart Regional Centre
- CBD Development
- Tourism and Events
- Transport & Logistics
- International Relations & Trade

ADVANCE *Rockhampton*
Region

In twelve months we've got some runs on the board...

- Secured over \$19.84 million in funding
- Secured the Region as a FIFO hub
- Completed 35% of the Economic Plan
- Implemented the Smart Hub on Quay St
- Launched "Gear Up Rocky" to support local business
- Entered into a Friendship City Agreement with Zhenjiang China.
- Appointed an Industry Champion for water security and agribusiness.



Focus areas for the next 12 months

1. Promote the City as a Resource Sector Services Hub.
2. Work with stakeholders to sustainably manage and utilise the Lower Fitzroy System water resources.
3. Work with the stakeholders and business to maximise the benefits from the upgrade to the Shoalwater Bay facility.
4. Residential Diversity: partner to establish a mix of residential housing types within the CBD.
5. Develop a Rockhampton Tourism and Events Strategy.
6. Promoting and hosting international government and trade delegations.



Open Discussion / Questions



**Thank you for
your time**