



**LATE ITEMS  
HEALTH & COMPLIANCE  
COMMITTEE MEETING**

**AGENDA**

**6 OCTOBER 2015**

*Your attendance is required at a meeting of the Health & Compliance Committee to be held in the Council Chambers, 232 Bolsover Street, Rockhampton on 6 October 2015 commencing at 3.00pm for transaction of the enclosed business.*

A handwritten signature in black ink, appearing to be the initials "C R" followed by a long horizontal stroke.

**CHIEF EXECUTIVE OFFICER**  
2 October 2015

Next Meeting Date: 03.11.15

**Please note:**

In accordance with the *Local Government Regulation 2012*, please be advised that all discussion held during the meeting is recorded for the purpose of verifying the minutes. This will include any discussion involving a Councillor, staff member or a member of the public.

---

## TABLE OF CONTENTS

---

ITEM	SUBJECT	PAGE NO
8	OFFICERS' REPORTS .....	1
8.5	DOG OFF-LEASH AREAS .....	1

---

## 8 OFFICERS' REPORTS

### 8.5 DOG OFF-LEASH AREAS

<b>File No:</b>	<b>7437</b>
<b>Attachments:</b>	<b>Nil</b>
<b>Authorising Officer:</b>	<b>Michael Rowe - General Manager Community Services</b>
<b>Author:</b>	<b>Catherine Hayes - Manager Community Standards and Compliance</b>

---

#### SUMMARY

*This report presents the feasibility of establishing further off leash park options and another agility park, similar to the one at Kershaw Gardens, as requested by Council.*

#### OFFICER'S RECOMMENDATION

THAT Council receives the Dog Off-Leash Areas report for their information and review.

#### COMMENTARY

Council resolved that a report be presented on the feasibility of establishing further off-leash park options and another agility park, similar to the one at Kershaw Gardens.

The current designated dog off-leash areas are:

- Ted Price Park, Gracemere (access via Breakspear Street and Holgate Close but limited to the area designated as a dog off-leash area by signpost)
- Duthie Park, North Rockhampton (access via Thozet Road, Marsh Avenue, Lawrence Avenue and Wiggington Street) but limited to the area and times designated by signpost and, in any event, not while the area is being used by animals participating in an obedience trail supervised by a body recognised for section 12(3)(d) of the authorising local law by the local government.
- Rosel Park, South Rockhampton, opposite the Quay Street pound (access via Quay Street).
- Victoria Park (Recreation Area), access via Lion Creek Road, Rockhampton, but limited to the area designated as a dog off-leash area by signpost.

Additional off-leash areas that are not designated but are currently used as off-leash areas include:

- Georgeson Oval, The Range (access via Meter Street, Normanby Terrace, Gardner Street, Hawkins Street and Pennycuik Street).
- Eddie Baker Park, Norman Gardens (access via Currawong Street and Rosella Court) but limited to the areas designated as a dog off leash area by signpost
- Kershaw Gardens, Park Avenue but limited to the area designated as a dog off-leash area by signpost, including agility park.
- No. 7 Dam, Mount Morgan (access via William Street and Byrnes Parade)

Proposed off-leash areas:

- Rigarlsford Park (access via Elphinstone Street) including agility park
- Jim Lindley Park (off Crick, Scott and Lutton Streets)
- Ski Gardens (access via Ramsden Street) including agility park

#### **Parks proposed to be designed as off leash areas under the Local Law 2**

Site analysis of the following parks has been completed in conjunction with Parks in regards to site infrastructure requirements.

---

**Georgeson Oval**

Located in The Range, the fenced area of Georgeson Oval is an undesignated off-leash area.

**Cost**

Costs would be incurred in the provision of a double fence at the entrances, a section of fencing where the building has been removed, drinking water to the enclosure, shade and signage.

**Site Advantages**

The site is reasonably flat and is used on a daily basis by residents.

**Site Disadvantages**

There is no shade.

### Eddie Baker Park

Located in Norman Gardens, the fenced area of Eddie Baker Park is an undesignated off-leash area. This park has been identified as having a dog off-leash area in the RRC Regional Open Space Plan.

A second leash free area could be installed beside the current facility providing an area for small and an area for large dogs.



#### Cost

Costs would be incurred in the provision of drinking water to the enclosure and shade. If a second enclosure was installed, additional costs would be incurred in the provision fencing, drinking water, signage, excreta bags and associated infrastructure and shade.

#### Site Advantages

There is sufficient space for a second enclosure.

#### Site Disadvantages

There is no shade.

### Rigarlsford Park

Located in Koongal off Elphinstone Street, Rigarlsford Park is neither a designated or non-designated off-leash dog area and would be an appropriate site for an agility park. The RRC Regional Open Space Plan identifies this park as having an opportunity to develop as a recreational corridor.



### Cost

Costs would be incurred in the provision of a fence, drinking water to the enclosure, signage, excreta bags and associated infrastructure. Additional costs would be incurred in purchasing dog agility equipment or the agility equipment from Kershaw Gardens could be used here.

### Site Advantages

The site is shaded and is reasonably flat. The park is used on a daily basis by residents.

### Site Disadvantages

The existing description for the park is primary drainage function. The site floods in rain events.

**Jim Lindley Park**

Located in Kawana, off Crick, Scott and Lutton Streets, Jim Lindley Park is neither a designated or non-designated off-leash dog area.

**Cost**

Costs would be incurred in the provision of a fence, drinking water to the enclosure, signage, excreta bags and associated infrastructure.

**Site Advantages**

The site is shaded and flat.

**Site Disadvantages**

Nil

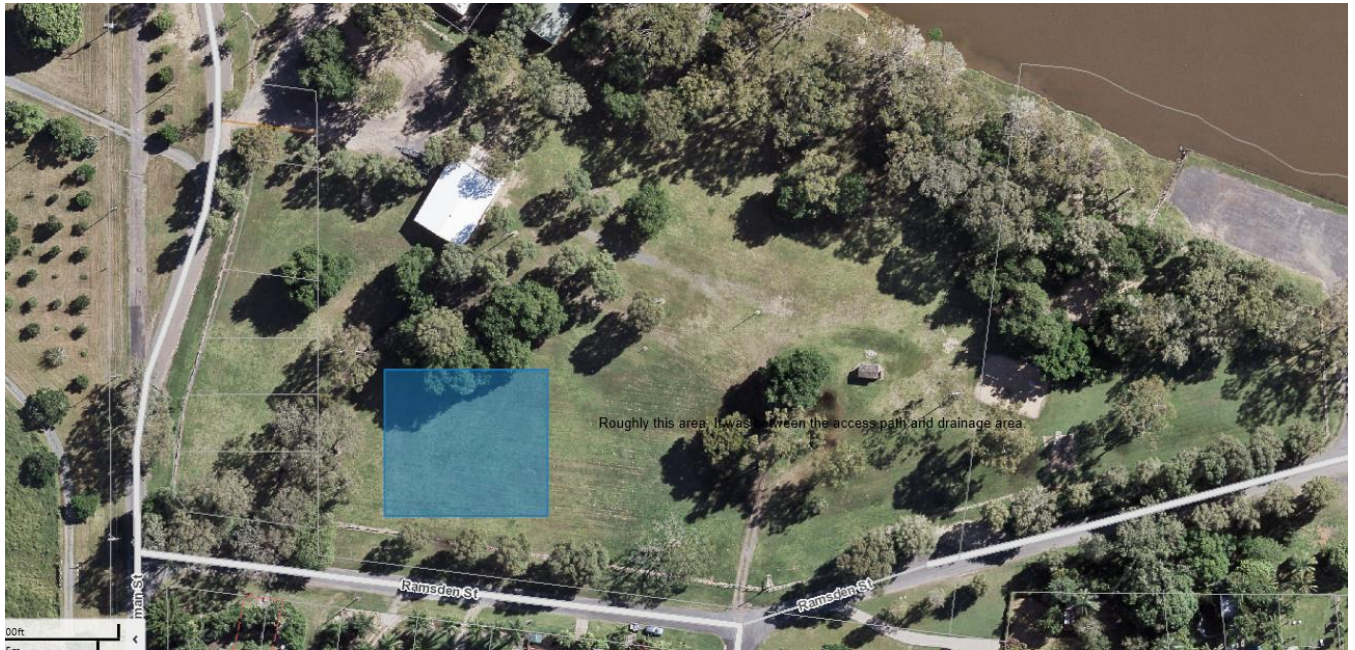


### Kershaw Gardens

Kershaw Gardens, Park Avenue but limited to the area designated as a dog off-leash area by signpost. A map for this location has not been provided as the location of the off leash and agility park will form part of the Kershaw Gardens Master Plan.

### Ski Gardens

Located in Wandal off Ramsden Street, the Ski Gardens is neither a designated or non-designated off-leash dog area and would be an appropriate site for an agility park.



### Cost

Costs would be incurred in the provision of a fence, drinking water to the enclosure, signage, excreta bags and associated infrastructure. Additional costs would be incurred in purchasing dog agility equipment.

### Site Advantages

The site is reasonably flat.

### Site Disadvantages

Nil

## Dam Park

Located in Mount Morgan off William Street and Byrnes Parade, Dam Park is neither a designated or non-designated off-leash dog area.



### Cost

Costs would be incurred in the provision of a fence, drinking water to the enclosure, signage, excreta bags and associated infrastructure.

### Site Advantages

The site is shaded and flat.

### Site Disadvantages

Nil

### BUDGET IMPLICATIONS

Parks has no budgetary allocation for dog off-leash areas. A full scope of costing would be required to be completed by Parks before Council resolves in favour of this matter or allocating funds.

### LEGISLATIVE CONTEXT

*Local Law 2 (Animal Management) 2011* allows Council, by subordinate local law, to designate an area within a public place as an area where a dog is not required to be on a leash (a dog off-leash area).

The areas described in Schedule 7 of Subordinate *Local Law 2 (Animal Management) 2011* are designated as dog off-leash areas.

The process to make an amendment to the subordinate local law to include new off-leash areas is:

- Consult with the public for at least 21 days,

- Accept and consider every submission properly made to Council by the close of the Consultation Period,
- By resolution decide whether to:
  - proceed with the making of the subordinate local law with or without amendments, or
  - not proceed with making the proposed subordinate local law.

**CONCLUSION**

This report presents potential locations for off-leash parks and agility parks in addition to those already designated.

Parks has no budgetary allocation for dog off-leash areas. A full scope of costing would be required to be completed by Parks before Council resolves in favour of this matter or allocating funds.