



COMMUNITIES COMMITTEE MEETING

AGENDA

29 APRIL 2014

Your attendance is required at a meeting of the Communities Committee to be held in the Council Chambers, 232 Bolsover Street, Rockhampton on 29 April 2014 commencing at 11:00am for transaction of the enclosed business.

A handwritten signature in black ink that reads "R. Chessman".

ACTING CHIEF EXECUTIVE OFFICER
22 April 2014

Next Meeting Date: 03.06.14

Please note:

In accordance with the *Local Government Regulation 2012*, please be advised that all discussion held during the meeting is recorded for the purpose of verifying the minutes. This will include any discussion involving a Councillor, staff member or a member of the public.

TABLE OF CONTENTS

ITEM	SUBJECT	PAGE NO
1	OPENING	2
2	PRESENT	2
3	APOLOGIES AND LEAVE OF ABSENCE.....	2
4	CONFIRMATION OF MINUTES	2
5	DECLARATIONS OF INTEREST IN MATTERS ON THE AGENDA	2
6	BUSINESS OUTSTANDING.....	3
	NIL.....	3
7	PUBLIC FORUMS/DEPUTATIONS.....	4
	NIL.....	4
8	OFFICERS' REPORTS	5
8.1	MONTHLY OPERATIONAL REPORT FOR MARCH 2014 - FACILITIES MANAGEMENT UNIT	5
8.2	COMMUNITY ASSISTANCE PROGRAM	23
9	STRATEGIC REPORTS	27
9.1	INFORMATION BULLETIN COMMUNITIES AND FACILITIES.....	27
9.2	INFORMATION BULLETIN FOR ARTS AND HERITAGE FOR MARCH 2014	41
10	NOTICES OF MOTION	51
	NIL.....	51
11	URGENT BUSINESS/QUESTIONS.....	52
12	CLOSED SESSION	53
13.1	TENDER 11100 - CATERING FOR ROBERT SCHWARTEN PAVILION.....	53
13.2	PROPOSED TERM LEASE OF RESERVE LOT 6 ON R26251 AND LOT 2 ON R2616 (CITY CHILD CARE AND ROCKHAMPTON REGIONAL COUNCIL).....	53
13	CONFIDENTIAL REPORTS	54
13.1	TENDER 11100 - CATERING FOR ROBERT SCHWARTEN PAVILION.....	54
13.2	PROPOSED TERM LEASE OF RESERVE LOT 6 ON R26251 AND LOT 2 ON R2616 (CITY CHILD CARE AND ROCKHAMPTON REGIONAL COUNCIL).....	55
14	CLOSURE OF MEETING	56

1 OPENING

2 PRESENT

Members Present:

Councillor R A Swadling (Chairperson)
The Mayor, Councillor M F Strelow
Councillor S J Schwarten
Councillor C E Smith
Councillor C R Rutherford

In Attendance:

Mr E Pardon – Chief Executive Officer
Mr M Rowe – General Manager Community Services

3 APOLOGIES AND LEAVE OF ABSENCE

4 CONFIRMATION OF MINUTES

Minutes of the Communities Committee held 1 April 2014

5 DECLARATIONS OF INTEREST IN MATTERS ON THE AGENDA

6 BUSINESS OUTSTANDING

Nil

7 PUBLIC FORUMS/DEPUTATIONS

Nil

8 OFFICERS' REPORTS

8.1 MONTHLY OPERATIONAL REPORT FOR MARCH 2014 - FACILITIES MANAGEMENT UNIT

File No: 1464
Attachments: 1. Facilities Operational Report for March 2014
Responsible Officer: Cheryl Haughton - Manager Community Services
Michael Rowe - General Manager Community Services
Author: Sharon Sommerville - Coordinator Facilities

SUMMARY

This report provides information for Councillors on the operational activities of the Facilities Management Unit during March 2014.

OFFICER'S RECOMMENDATION

THAT the Facilities Management Unit Monthly Operational Report be received.

**MONTHLY OPERATIONAL REPORT
FOR MARCH 2014 - FACILITIES
MANAGEMENT UNIT**

**Facilities Operational Report for March
2014**

Meeting Date: 29 April 2014

Attachment No: 1

Activity	Completed Tasks	Progress
Contracts	<ul style="list-style-type: none"> • Fire Systems Contract – offer of plus one year has been accepted by contractor • Fire Equipment Contract – offer of plus one year has been accepted by contractor • Westwood Toilet cleaner – offered contractor plus one year. Awaiting response 	Information
Breakdown and Incident Maintenance	<p>A general overview of the various Breakdown and Incident maintenance activities attended to cover the period of March. Due to exceeding budget targets for incident and breakdown maintenance, a list of deferred maintenance tasks is provided within the report.</p> <ul style="list-style-type: none"> • We have spent \$602 on graffiti incidents for this month mostly on the public amenities. • Window panels at Gracemere Community Hall were vandalised costing \$546 to replace. • RRC Library had window panels smashed by vandals costing \$2560 to replace. • Repairs were carried out to CCTV by a contractor at various sites at a cost of \$2,133. • Repairs are currently being carried out by electrical staff on the field lighting at Saleyards Park. A new switchboard has been built and will be installed as the club/ Sport and Rec. schedules allow. • Breakdown maintenance costs were high this month due to the number of general power and light requests. 	Information
Electrical	<ul style="list-style-type: none"> • Repairs were carried out at various Parks sites including: Norbridge Park irrigation, Kershaw Scented Gardens and Botanic Gardens zoo. • Testing and tagging was carried out for the Botanic Gardens Administration. • The Gracemere Depot hoist was replaced for Fleet Services. • Electrical inspection and rectification work was carried out at the East Street Rotunda. • Work for Regional Services included: general traffic light inspections and rectification work on all intersections, street lighting in East Street, and capital works including wireless installations. • FMU statutory maintenance included: switchboard and RCD testing, Auto Door maintenance, City Hall generator testing and servicing, and fire/ emergency lighting testing. • Corrective maintenance for this month included the general power and light work in the Ann Street residence, repairs to cabling and switchboard at the Rockhampton Showgrounds, cable protection in the Dooley Street stores, and junction boxes replaced on the Southside Pool front awning. • Work for Communities Department included: repairs to Arnolds Store power supply at Rockhampton Heritage Village, and preparatory work on the metering at Bauhinia House. • Electrical staff have been utilised in the refurbishment work at the Walter Reid Cultural Centre. • Numerous repairs have been carried out by electricians and security contractors on the CCTV network with the majority of cameras now operational. Equipment has now arrived from Pelco for the repair of the remaining cameras including the North side link to Queens Park. These repairs will be carried out in 	Information

	the coming weeks.	
Facilities	<ul style="list-style-type: none"> • Mt Morgan Railway Bridge demolition contract awarded. Work to be programmed after Easter. • Facilities Project Manager scoping, and relocation options for Planning and Engineering Services staff to Walter Reid Cultural Centre. Works commencing on cabling, electrical, floor topping. • Communities and Facilities and Finance completed weighting of all Non Commercial building assets in accordance with new building weighting criteria for inclusion of the new Buildings Asset Management Plan. • Preparation of revised 13/14 and new 14/15 Operational Budgets including three year planned maintenance program. • Fire 8 supplied new evacuation signage for Customs House. • Met again with QFRS to review Bond Store. Further discussion required with Council's building compliance to follow up exit requirements before finalising inspection with QFRS. • Met with QFRS to inspect Bauhinia House. Building complied. • Assisted Parks with evaluation of EOI for RRC's aquatic facilities. • Assisted Property and Insurance with data for contents insurance preparation for buildings. 	Information

The Facilities Management Unit's Operational Budget is broken down into Incident, Statutory, Preventative, Corrective, Operational and Breakdown maintenance for budget and planning purposes. Over the next six months the Facilities Monthly Operational report will aim to provide the Councillors and the Communities Committee with some insight on the operational functions required to deliver the planned and unplanned maintenance to service Council's building assets.

Breakdown Maintenance obligations for the Facilities Management Unit.

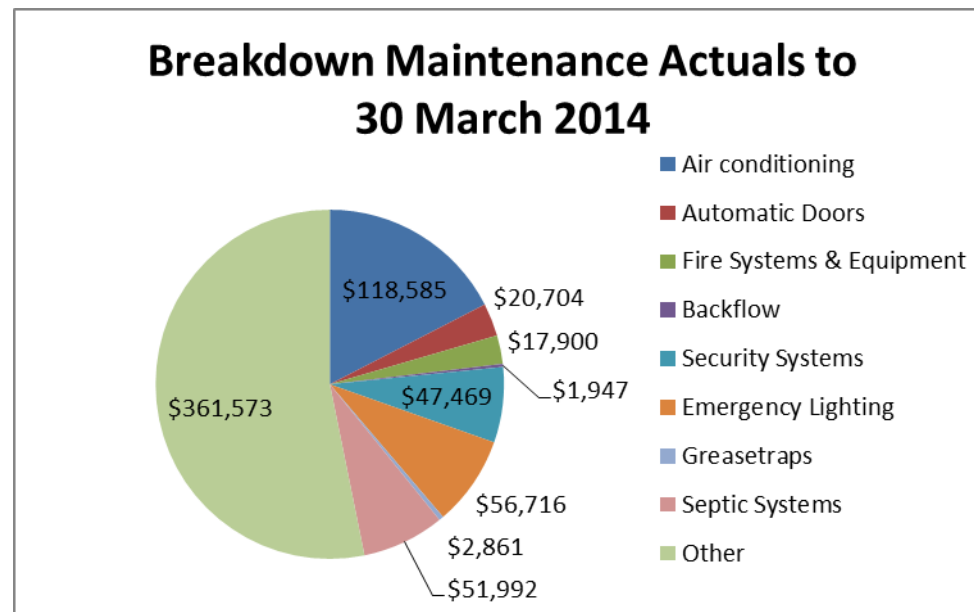
This month's report provides an overview of how Facilities manages Breakdown Maintenance including resource requirements.

Breakdown Maintenance is unplanned and reactive maintenance actions performed to restore an asset to operational condition, as a result of an unforeseen failure. This includes, but is not limited to, repairs to leaking taps, door latches, repair broken windows, repair water leaks, faulty plant/equipment components, unblock drains, replace blown lights/fuses and replace faulty air conditioning controls.

Breakdown maintenance is not easily budgeted for due to the nature and type of activity involved. The breakdown maintenance budget is usually determined utilising historical information for both budget allocation and likelihood of event occurring.

Facilities proposed a breakdown budget of \$1,002,169 in the 13/14 Operational budget to deliver the program. The adopted budget was \$510,015. At revised budget, breakdown portion of the budget was increased to \$555,586. To enable an increase to meet the costs associated with Breakdown Maintenance within the 13/14 financial year, the operating, preventative and corrective maintenance categories funded within MP450 budget have been disadvantaged.

The chart below provides details of actual costs to 31 March 2014 for breakdown maintenance. The overall cost to date has reached \$683,747, exceeding the adopted and revised budgets as anticipated by Facilities. Facilities have developed sub activities for the main areas associated with breakdown which are highlighted in the chart. The remaining “Other” criteria relates to various breakdowns relating to those activities mentioned above.



In addition to the costs to date, there are outstanding work order and pathway requests that have been deferred as a result of maintenance constraints. These works will be reprioritised on a needs basis and programmed accordingly.

In an effort to reduce future breakdown maintenance costs, Communities and Facilities are working on strategies to implement programs through corrective (planned) maintenance to improve the overall asset condition and reduce future reactive maintenance.

Corrective Program for March 2014 from Pathways

Request	Site Location	Description	Work Order No.	Comments
226341	Walter Reid Centre	Floorboards sanded and polished	2013-002834	A0123769.302. Scheduled for April
	City Hall	Floor slippery when wet	2013-008213	A0123701.302. Scheduled for April with Contractor
	Dooley street Depot	Washdown bay annual camera inspection	2013-041737	A0123779.300 to be scheduled

Corrective Program for March 2014 Defects identified

Asset ID	Location	Description of Work to be done	Comments
884654	Amenities Block - Showgrounds Road - Mount Morgan	The paint work to the fascia boards / barge flashings and privacy screen is faded and chalky looking. Please repaint all previously paint surfaces.	Rescheduled for March 14
884654	Amenities Block - Showgrounds Road - Mount Morgan	The diffuser covers on both of the fluorescent lights in the amenities building have insects in them. Please remove the diffuser cover clean them and refit them.	Ongoing to be completed Mar 14
952165	Structure Inspection - Promenade and Lookout shelters x3 Quay Street Rockhampton City	There is surface rust visible on the shelter and the paint is marked and faded. Please clean and treat all rusted areas and repaint all previously painted surfaces.	Small shelters painted the large are up for 14/15 minor capital
972073	Main Workshop and Stores building - Rton Work Depot	There are electrical cables exiting the switchboard that have no shielding, and one conduit is not secured to the box. Please provide some form of metal shielding to the electrical cables.	Equipment measured and ordered, to be completed March 14
974057	Site Grounds Inspection - Youth Centre Mt Morgan	The hot water service is plugged into a 10amp GPO and should be hard wired on its own circuit. Please have an electrician inspect and repair.	Ongoing to be completed in Mar 2014
987623	Tourist Info Centre Gladstone Road	Gardens beds around western & southern side of building which are above weep holes in brick work & cover metal termite barrier, which will allow termites to gain entry to building. Please remove all soil & chip bark / scrubs from around building where termite barrier and weep holes are cover and where possible provide drainage away from the building.	Complete
988970	Heritage village, Reception building	There are insufficient down pipes fitted to building, maximum spacings 12m & 1.2 m for valleys. Please fit additional down pipes to building and divert water away from building.	In progress
988979	Heritage village, Demountable office	The gutters and roof of demountable building are full of tree debris from overhanging trees. Please remove all tree debris from gutters and roof of building and trim all overhanging trees away from building.	In progress
1007026	Memorial Gardens, Administration	The paver on the western side of the building at the northern end are uneven and a trip hazard, and one of the pavers at the southern doorway is damaged, while some of the pavers along the eastern side have sunk allowing water to pond against the building.	In Progress
1007036	Memorial gardens	Chemical garden shed door & bottom rail to opening is rusted. Please replace front panel including doors.	In Progress

1007254	Heritage village, Administration office	There are insufficient down pipes fitted to building, maximum spacings 12m and 1.2 m for valleys. Please fit additional down pipes to building and divert water away from building.	This has been completed
---------	---	---	-------------------------

The corrective program for March has been reduced to allow carpenters to work on the Riverside Promenade in preparation for Anzac Day 2014, Schotia place and Walter Reid staff accommodation projects.

Electricity

The report will focus on electrical consumption anomalies and what action taken to investigate over consumption and actions to reduce the consumption. The last twelve months reports have provided Councillors with an insight to those sites that have high electricity consumption. No anomalies found this month. Developing reporting function to provide to asset custodians to measure electricity consumption and look at options to increase energy efficiency.

Kershaw Gardens waterfall

An Electrician completed a tong test on the motor whilst replacing fuses with a D-Curve circuit breaker. The average current draw was 56 amps / phase which equates to around 32.2kw. At an estimated rate of 30c/kwh, the pump is costing approximately \$9.66/hour to operate. If the pump operates 24/7, Council can anticipate an annual consumption of approximately 282Mw equating to \$80K+ per annum. This would be the reason why Ergon have utilised tariff 20 (large) for this site. Facilities is liaising with the Coordinator of Procurement and Logistics with regards to contestable accounts and seeing if this account can be included in an effort to reduce operating costs.

Statistics for Pathway Requests Work Orders for 2013/14

	Requests Created	Requests completed	Work Orders Created	Work Orders Completed
2012/13 total	2153	1509	4808	2910
July	200	183	154	257
August	190	190	630	178
September	178	156	370	159
October	152	142	429	151
November	162	130	544	133
December	150	127	338	73
January	130	139	319	134
February	145	145	320	121
March	123	126	295	98

Created Work Orders by Activity

	Incident	Statutory	Preventative	Corrective	Operational	Breakdown	Other
2012/13 total	306	999	79	499	358	2189	324
July	46	141	6	29	30	246	16
August	26	255	13	30	46	245	15
September	32	84	7	22	25	181	9
October	37	76	23	28	39	201	25
November	22	235	4	49	41	175	18
December	17	70	1	55	39	143	13
January	35	95	21	12	21	127	8
February	35	85	12	28	18	133	9
March	37	80	7	21	14	123	13

Completed work orders by Activity

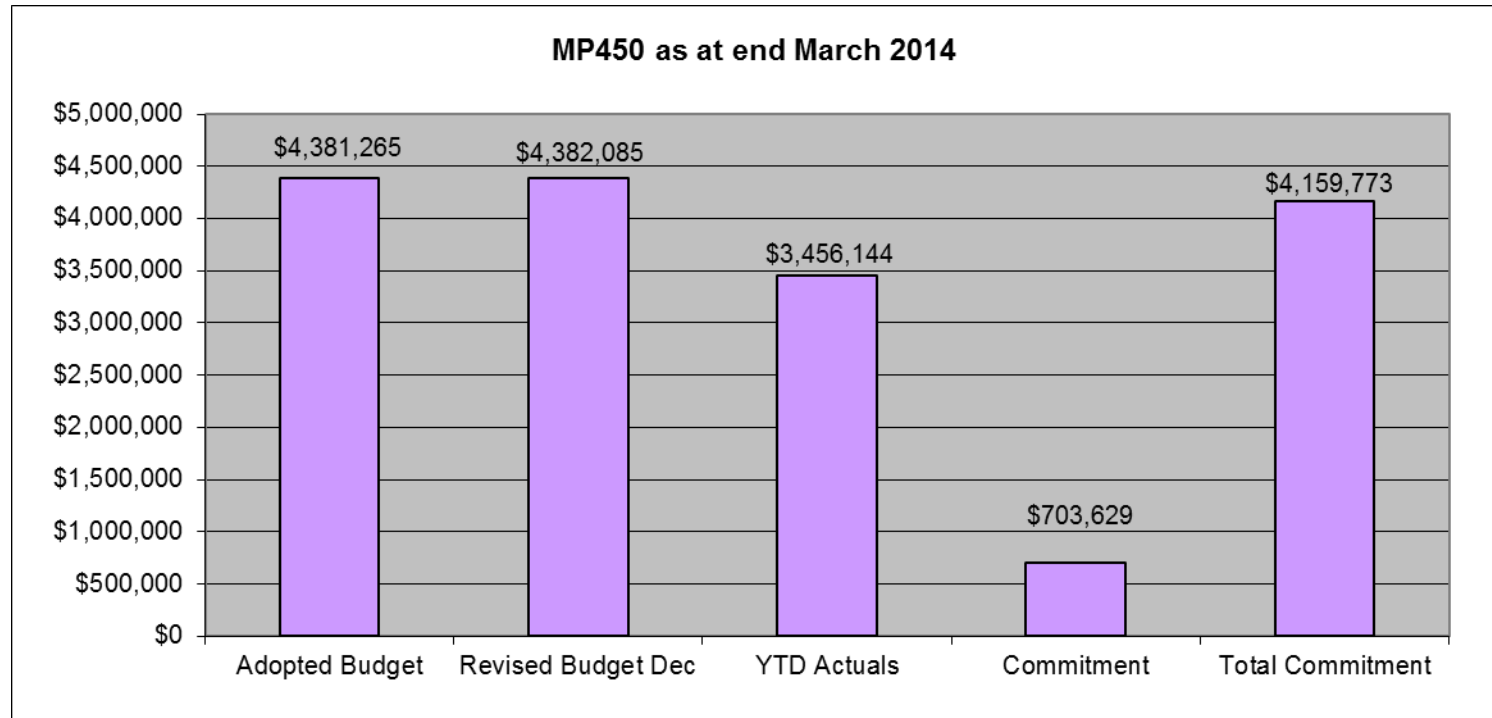
	Incident	Statutory	Preventative	Corrective	Operational	Breakdown	Other
2012/13 total	199	370	59	258	262	1631	231
July	33	41	1	13	27	132	10
August	15	6	6	10	23	112	6
September	18	51	5	2	17	57	9
October	21	4	8	8	17	83	10
November	10	32	1	20	19	49	2
December	4	3	1	12	11	34	8
January	21	18	2	1	9	78	5
February	16	26	8	2	2	63	4
March	11	27	3	7	2	44	4

Statistics for Purchase Orders for Facilities 2013/14

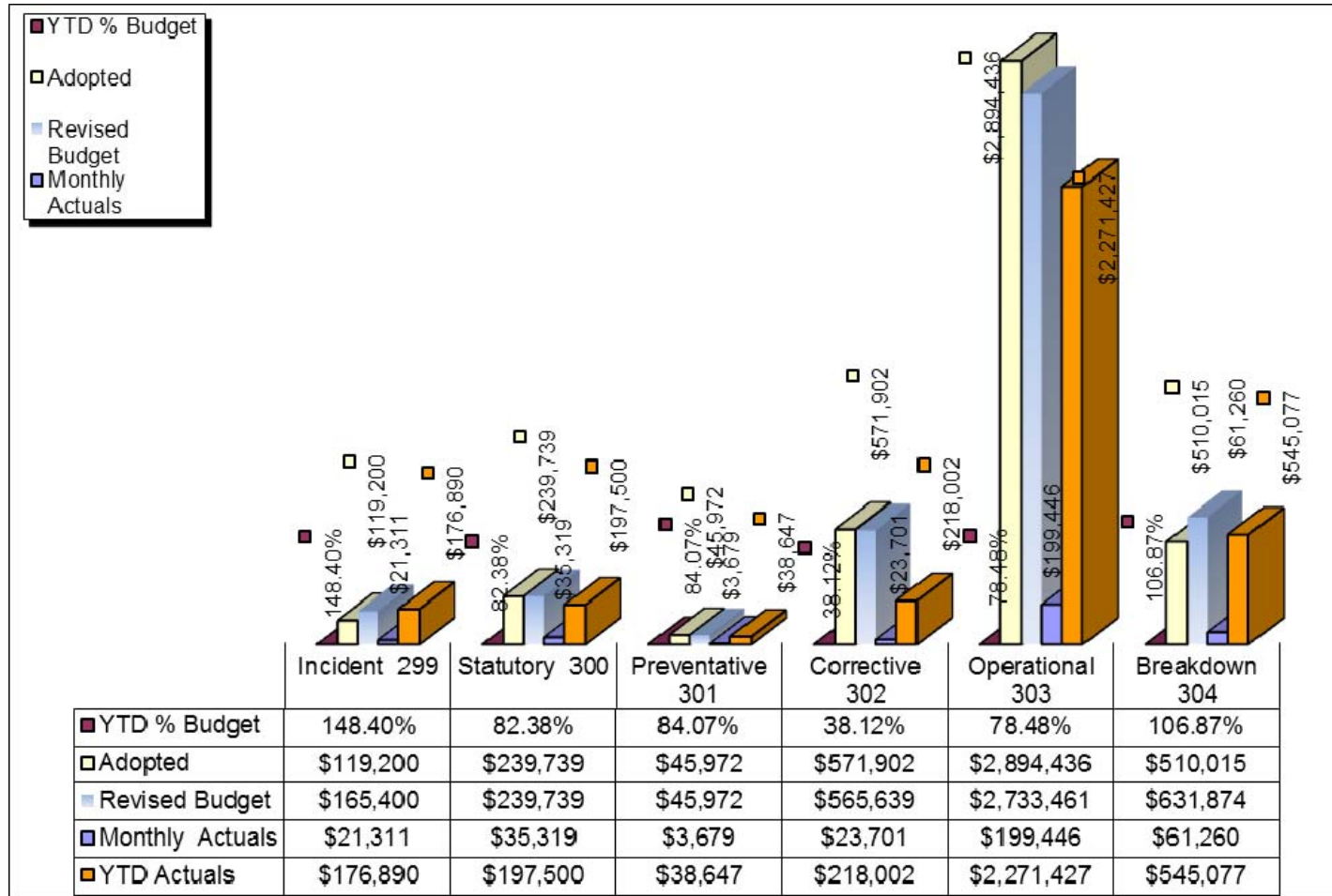
	Purchase Orders Raised	Purchased Orders Delivered
2012/13 total	939	3067
July	68	204
August	50	196
September	38	229
October	58	202
November	73	261
December	59	174
January	60	243
February	48	130
March	68	132

Operational Spend

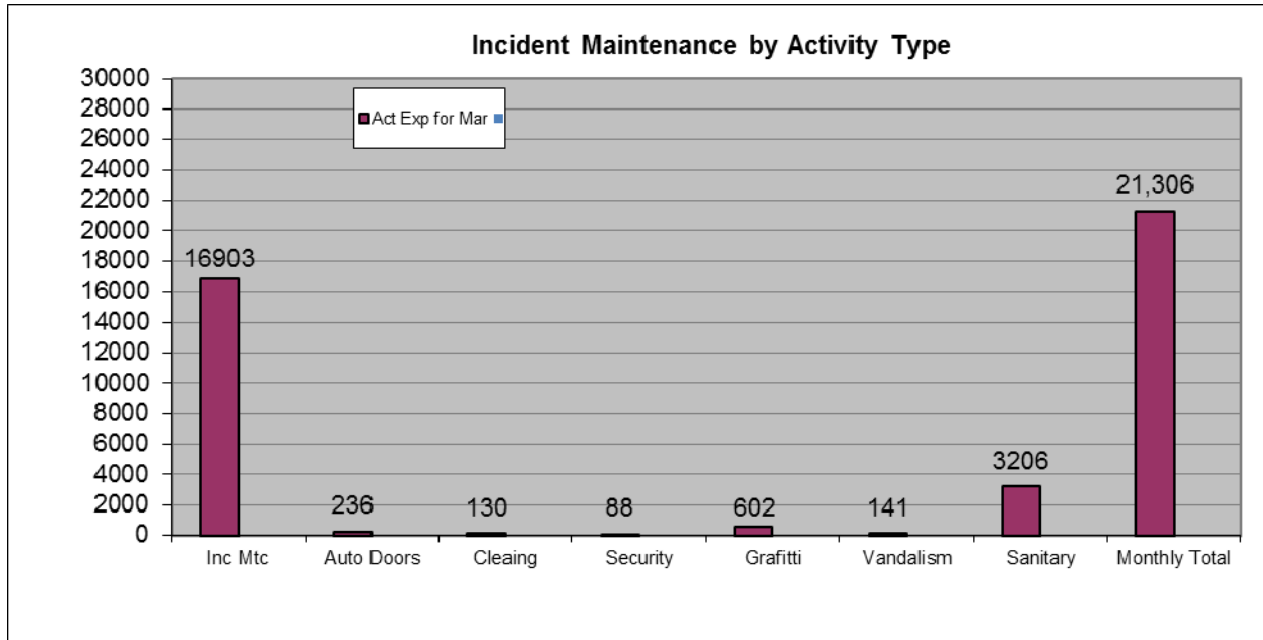
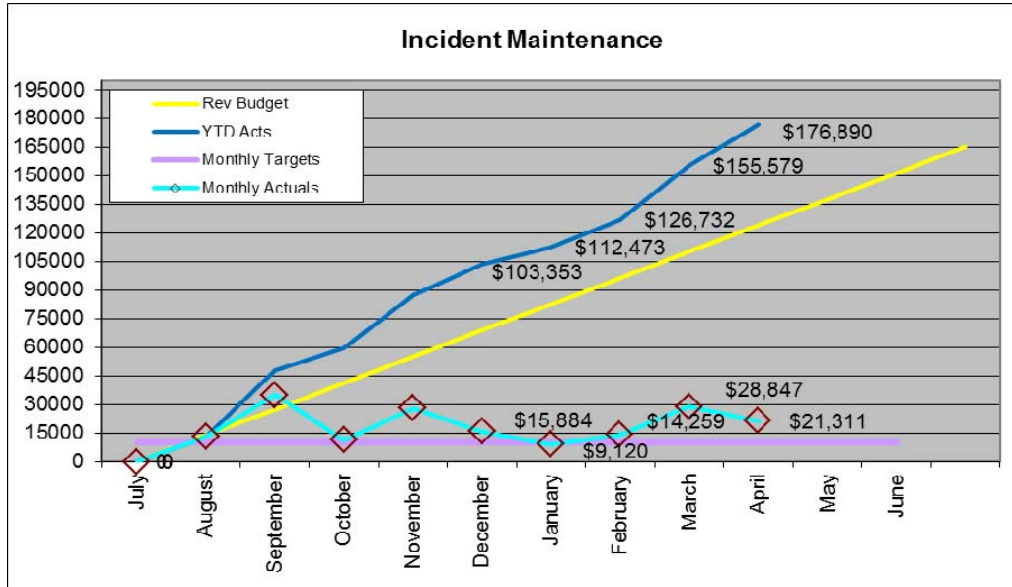
Maintenance Program (MP450) YTD Actual + Committals indicates that Maintenance Budget has reached 78.87% overall budget expenditure for 2013/14 year. Based on the commitments and tracked costs the budget is currently running on target.

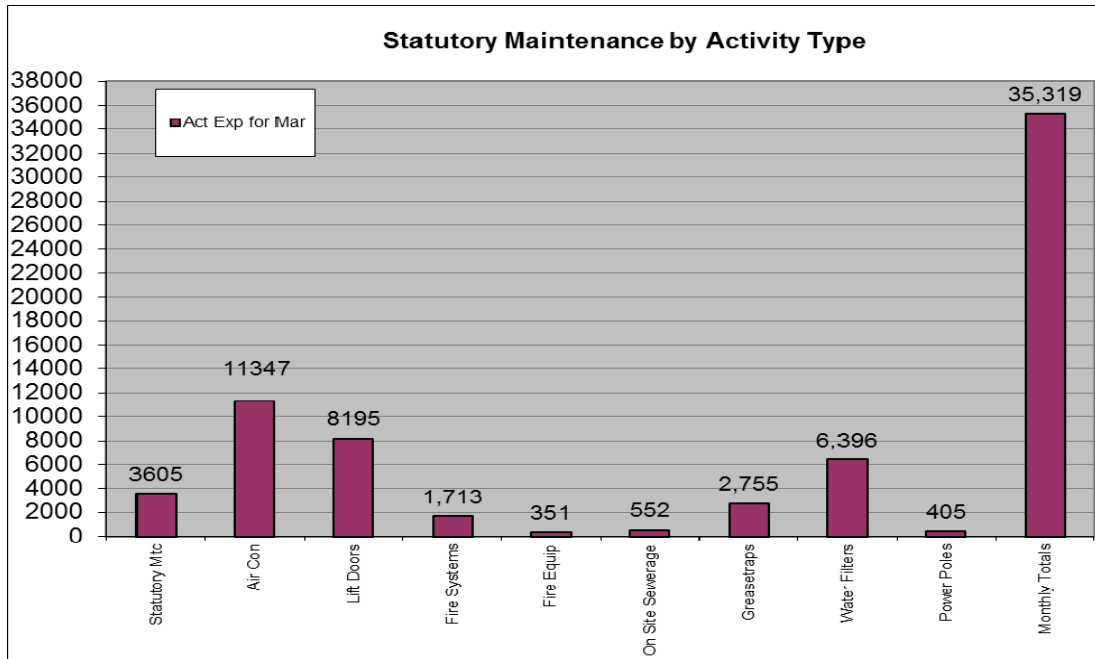
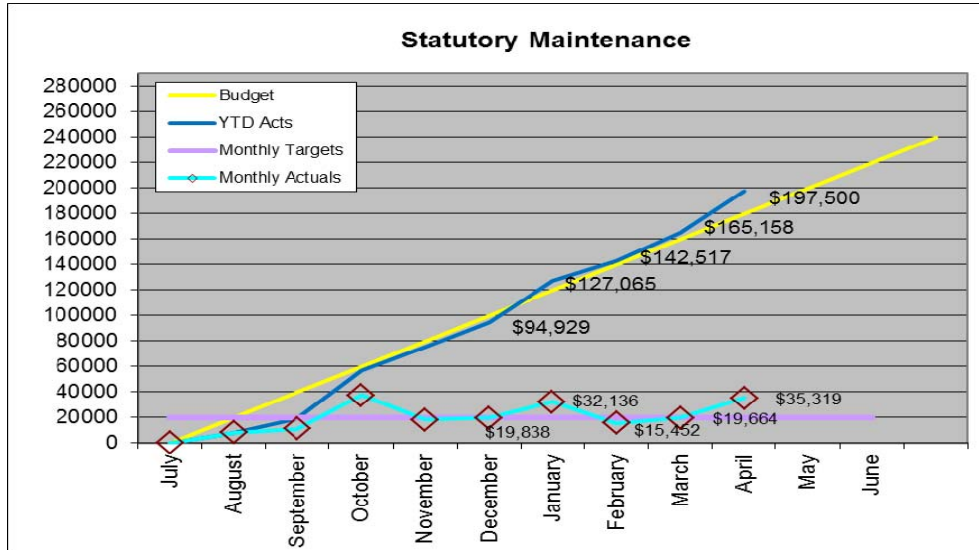


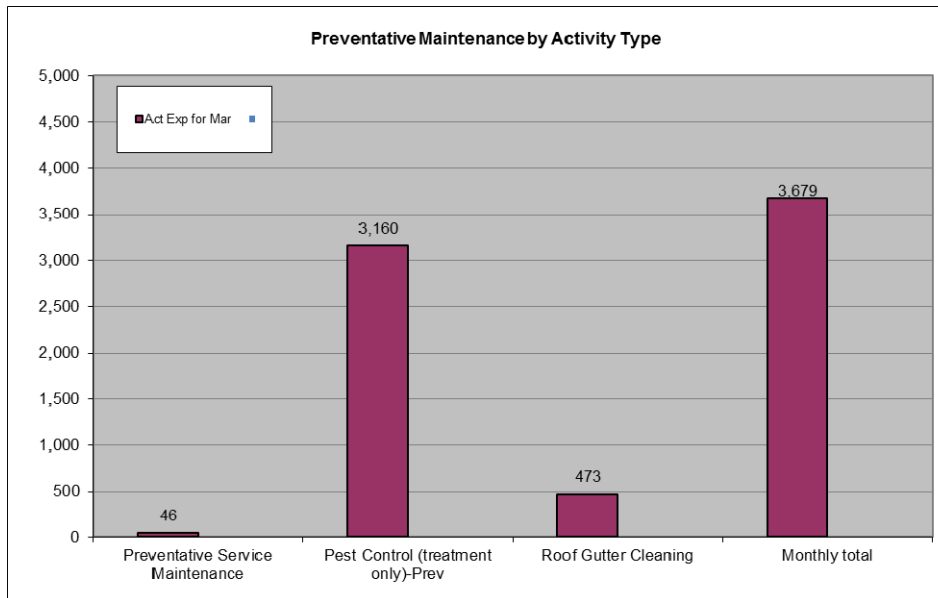
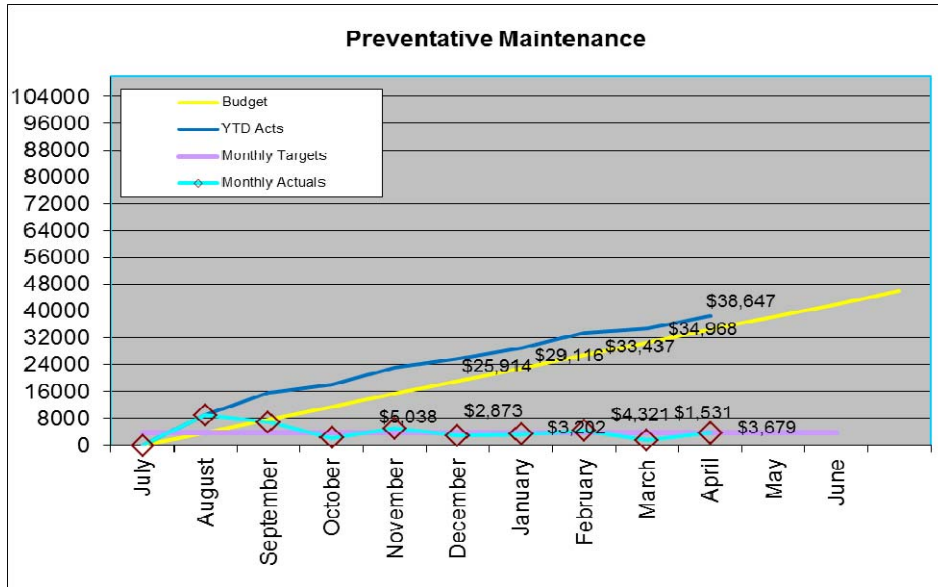
The commitment figures are based on contracts through to June 2014. These contracts include cleaning, security, fire systems/equipment, air conditioning and other statutory/preventative maintenance contracts. Corrective and incident maintenance orders are set up per activity. The original adopted budget activity targets have been amended through revised budget to address issues with budgets being exceeded for incident and breakdown maintenance. The impact on incident being over budget will mean deferred planned (corrective) and some low impact breakdown maintenance works.

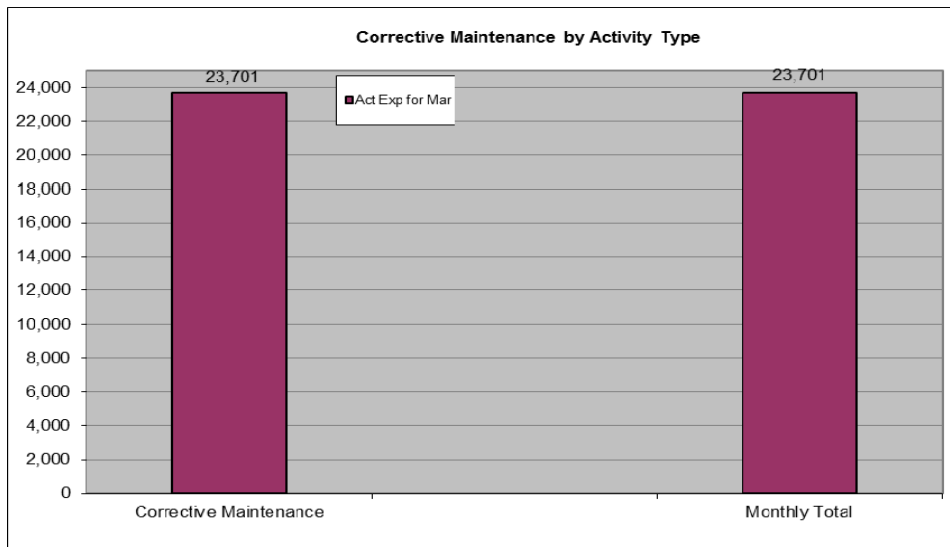
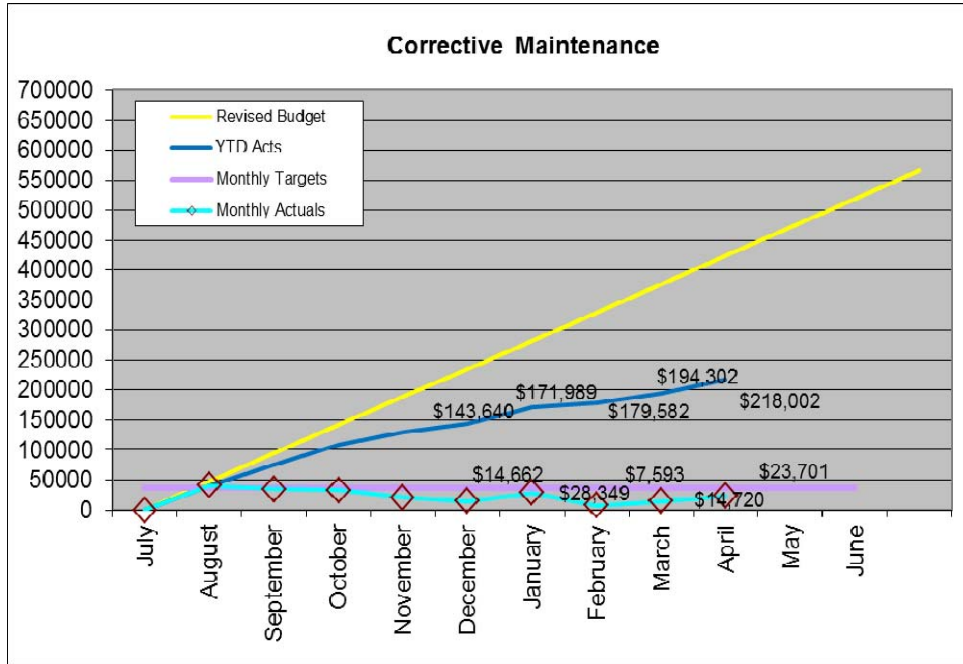


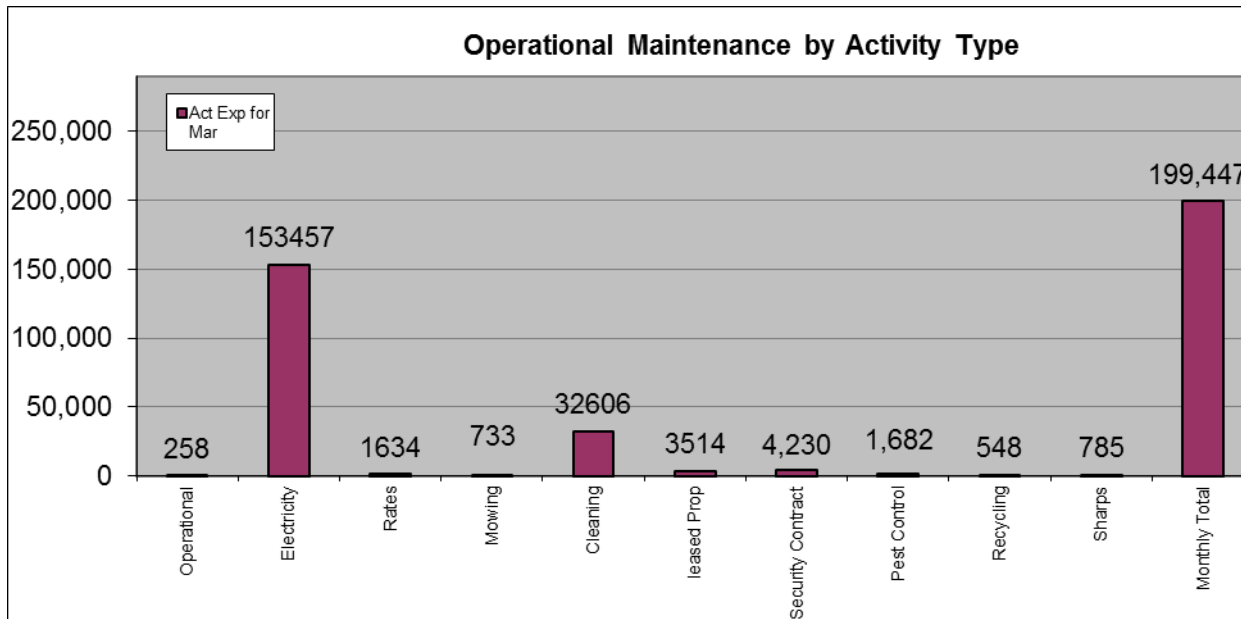
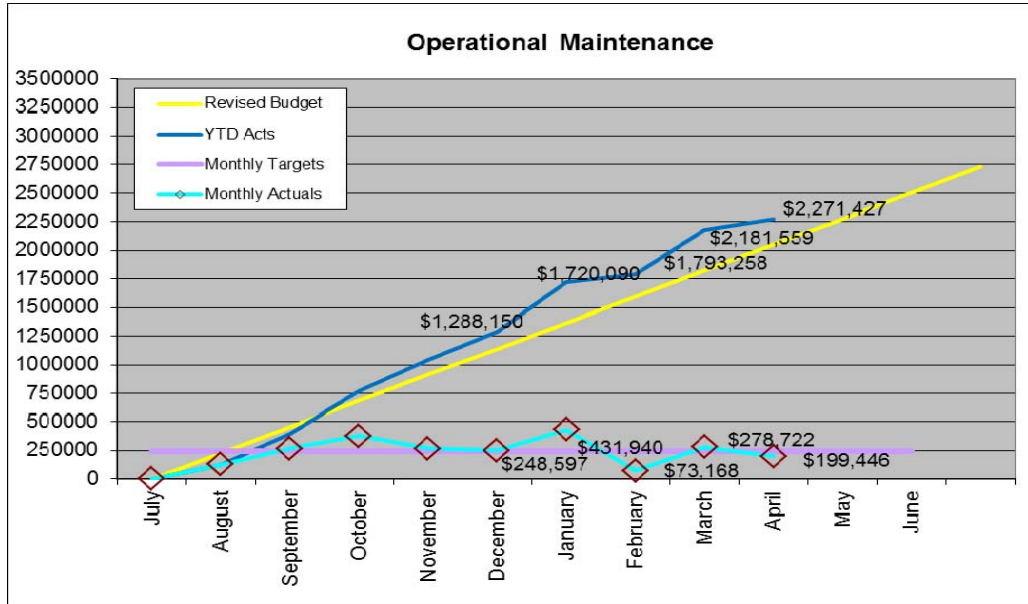
Note: The first column of each of the Activity Type graphs includes items of a general nature that are not captured as a separate activity cost. For example incidents that relate specifically to graffiti have their own activity number. If it does not fall into a category listed on the graph it will be included with the general nature column.

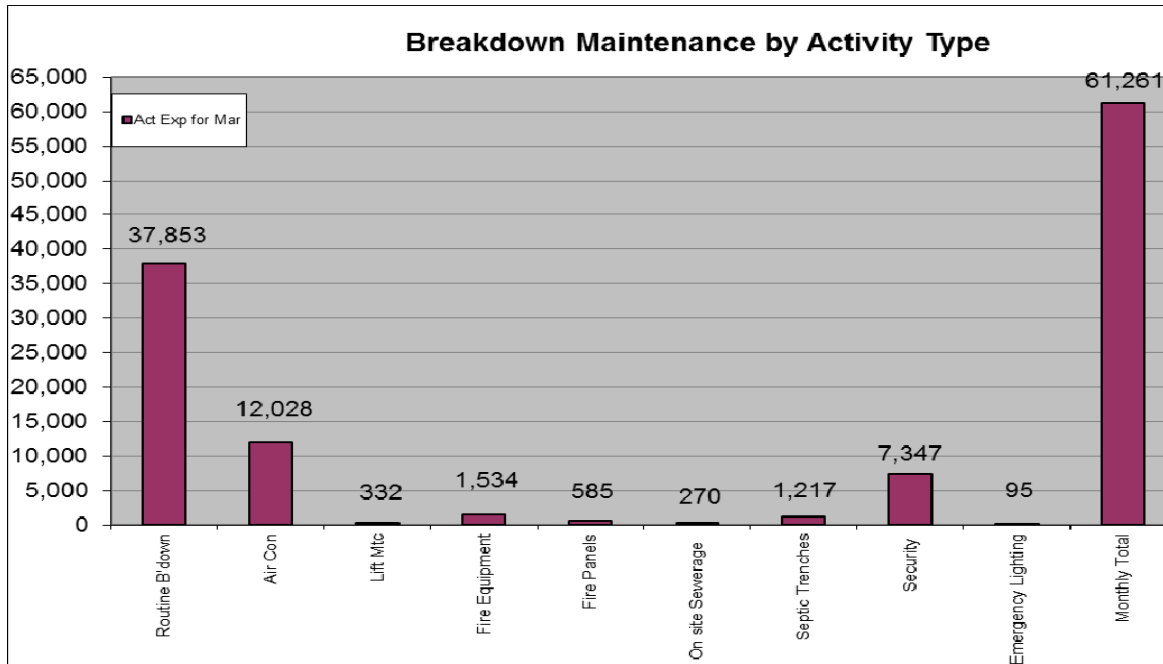
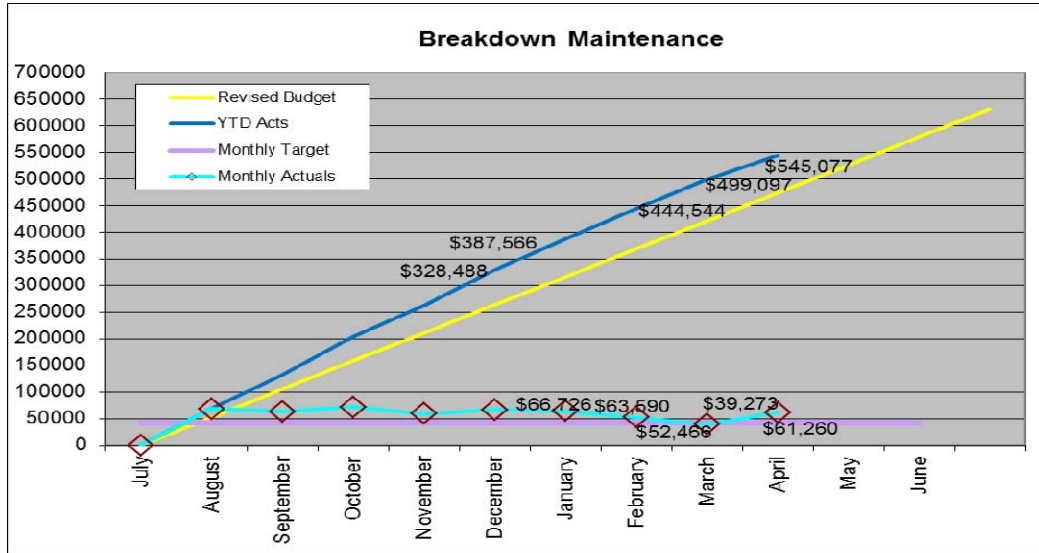












Facilities Capital Works Program Update

Adopted Budget	Revised Oct Budget	Cost Centre	Project Title	YTD Actual	Committals	Total Committals	% Complete	Comment Period
\$	\$ 82,935	0943086	[U] Heritage Village Hydrant System-Upgrade	\$ 2,891	\$ -	\$ 2,891		On Hold until FRW complete Ring Main
\$50,000	\$ 50,000	0976052	[R] Rton Showgrounds Toilet Upgrade Exhibition	\$ 28,165	\$ 5,500	\$ 33,665	100%	Completed
\$60,000	\$ 52,000	0976085	[R] Rton Showgrounds Switchboard enclosure	\$ 48,362		\$ 48,362	100%	Completed
\$60,000	\$ 40,000	0976093	[U] Walter Reid Install RCD Protection	\$ 14,161		\$ 14,161	100%	Completed
\$35,000	\$ 27,743	1017162	[R] Rton Showgrounds Toilet Upgrade Main	\$ 32,862	\$ -	\$ 32,862	100%	Completed
\$65,880	\$ 21,960	1017164	[N] Voltage Power Optimisation Unit (CEEP-Pilbeam & Art Gallery)	\$ -	\$ -	\$ -		Funding not approved
\$50,000	\$ 55,150	1017167	[R] Replace Roof on Dog Kennel Pavilion	\$ 55,578	\$ 100	\$ 55,678	100%	Completed
\$60,000	\$ 60,000	1017168	[R] Pilbeam Theatre - Repairs to damaged downpipes	\$ 36,747		\$ 36,747	100%	Completed
\$50,000	\$ 50,000	1017169	[R] WRCC Air Conditioning Access	\$ 12,584	\$ 503	\$ 13,087	100%	Completed
\$30,000	\$ 10,000	1017170	[R] Regional Library Air Conditioning Access	\$ 10,135	\$ -	\$ 10,135	100%	Completed
\$120,000	\$ 201,927	1017174	[N] Storage Shed - Cambridge St	\$ -	\$ -	\$ -		To be carried out by Peter Owens, managed by Pilbeam Staff not FMU
0	\$ 367,160	0971866	City Hall Façade Repairs & Refurbishment	\$ 310,720	\$ 24,919	\$ 335,639	90%	Airconditioners to Council chambers completed, Order has been placed on Ruswin Security for the upgrade of security system. Works to be carried out starting 30 March 2014
\$120,000	\$ 120,000	0976040	[R] Gracemere Depot Plant Washdown Area	\$ 85,767	\$ 7,165	\$ 92,932	90%	All FMU works completed including shade structure and retaining wall. Infrastructure staff installing new pit to washdown bay
\$47,180	\$ 47,180	0983908	[R] Customer Service Renewal Program	\$ -	\$ -	\$ -		Funding to be approved before project can be carried out.
\$90,000	\$ 90,000	0983910	[R] Facilities Management Renewal Program - Dooley Street Depot Wash down Bay	\$ 22,904	\$ 3,565	\$ 26,469	100%	Completed
		1023202	[R] Facilities Management Renewal Program - Grace Brothers Shed	\$ 9,647	\$ 64,866	\$ 74,513	50%	ITQ has been evaluated and an order placed on Neil Jones Plumbing
\$60,000	-\$ 40,000	0987829	[U] Local Disaster Coordination Centre	\$ -	\$ -	\$ -		Pending funding
\$111,283	\$ 37,094	1017163	[N] Voltage Power Optimisation Unit (CEEP-City Hall)	\$ -	\$ -	\$ -		Funding not approved
\$55,940	\$ 18,646	1017165	[N] Voltage Power Optimisation Unit (CEEP-Dooley St)	\$ -	\$ -	\$ -		Funding not approved
\$580,880	\$651,715		Total Capital Expenditure	\$ 670,523	\$ 106,618	\$ 777,141		

8.2 COMMUNITY ASSISTANCE PROGRAM

File No:	7822
Attachments:	1. Community Assistance Program - Attachment to report to Communities Committee 29 April 2014
Authorising Officer:	Michael Rowe - General Manager Community Services
Author:	Cheryl Haughton - Manager Community Services

SUMMARY

Applications to the Community Assistance Program have been received from QSquash Central Region and AM Media Consultants Pty Ltd t/a Special Children's Christmas Party. The applications were assessed and both are recommended for funding for a total amount of \$6,000.

OFFICER'S RECOMMENDATION

THAT Council approves the following applications for funding from the Community Assistance Program:

Applicant	Purpose of Grant/Sponsorship	Grant/sponsorship Recommended
QSquash Central Region	2014 Queensland Junior Squash Championships	\$3,000
AM Media Consultants Pty Ltd t/a Special Children's Christmas Party	2014 Central Queensland Special Children's Christmas Party	\$3,000

COMMENTARY

Two applications to the Community Assistance Program have been received for a requested amount of \$7,800. The attached spreadsheet gives details of the applications.

The applications have been assessed in accordance with the Community Grants Procedure and recommendations are provided based on the assessment criteria with the grant matrix applied to indicate the recommended funding level.

To enable a proper assessment of the application from QSquash Central Region the assessment panel requested copies of quotes to support the major expenditure items and further explanation of the estimated administrative costs in the project budget. QSquash Central Region has provided quotes for venue hire and catering costs as well as a satisfactory account of the estimated administrative costs associated with hosting the 2014 Queensland Junior Squash Championships. The panel has assessed the application and has recommended that \$3,000 financial assistance be provided for the 2014 Queensland Junior Squash Championships. QSquash Central Region has not previously sought financial assistance from Council.

The Central Queensland Special Children's Christmas Party has been held annually at the Rockhampton Showgrounds since 1993. Over this time 25,000 invitations have been offered to children in the Central Queensland area who are living with a life threatening illness, or have a physical or intellectual disability. This year the applicant expects to issue up to 1200 invitations to local children. The event will consist of a meal, snacks, drinks and treats, entertainment (carnival rides, face painting, stage show and guests such as cast members from popular TV series) toys and private time with Santa for each invited child.

As per the application AM Media Consultants Pty Ltd has not yet sought corporate support or financial assistance from other local government organisations in the Central Queensland

region for the 2014 event. The assessment panel noted that approximately 53% of the total budget of \$139,445 relates to wages to organizational staff and administration costs.

In previous years Council has provided in-kind support for this event by way of use of a show grounds pavilion and associated equipment hire. The panel assessed the application and has recommended that \$3,000 be provided to AM Medial Consultants Pty Ltd t/a Special Children's Christmas Party for the 2014 Central Queensland event.

COMMUNITY ASSISTANCE PROGRAM

Community Assistance Program - Attachment to report to Communities Committee 29 April 2014

Meeting Date: 29 April 2014

Attachment No: 1

Community Assistance Program

Attachment to report to Communities Committee - 29 April 2014

Applicant	Project Name	Start Date	End Date	Total Project Cost	Amount Requested	Amount Recommended	Assessment Comments
Qsquash Central Region	2014 Junior Squash Championships	28/06/2014	12/07/2014	\$18,500	\$4,000	\$3,000	CAP 2013-14 Round 2 application held over pending receipt of further information. Quotes for venue hire and catering received. Clarification regarding administration costs received. Recommend \$3,000 as per funding matrix.
AM Media Consultants Pty Ltd t/a Special Children's Christmas Party	2014 Central Queensland Special Children's Christmas Party	29/11/2014	29/11/2014	\$139,445	\$3,800	\$3,000	Quotes for expenditure not provided. \$75,000 of total budget of \$139,445 relates to wages to organisational staff and administration costs. Children and families from across Central Queensland are invited to attend - at the time of application sponsorship had not been secured from other local government organisations or the business community. Recommend \$3,000 as per funding matrix.
						\$ 6,000	

9 STRATEGIC REPORTS

9.1 INFORMATION BULLETIN COMMUNITIES AND FACILITIES

File No:	1464
Attachments:	1. Information Bulletin Communities and Facilities
Authorising Officer:	Michael Rowe - General Manager Community Services
Author:	Cheryl Haughton - Manager Community Services

SUMMARY

This report provides information on the activities of the Communities and Facilities section for the month of March 2014.

OFFICER'S RECOMMENDATION

THAT the Information Bulletin reporting on the activities of the Communities and Facilities section for the month of March be received.

COMMENTARY

The Communities and Facilities section has responsibility for the following community service areas:

1. Administration
 - Community Assistance Program
 - Community Hall Hire
 - Community Safety
 - Community Development
 - Multicultural
2. Libraries
 - Community Programs
 - Collections
 - Utilisation
 - Technology Centre
3. Home Assist Secure
4. Child Care
5. Facilities

The attached report contains information on the activities of these program areas for the month of March 2014. The Facilities area is covered in a separate report.

INFORMATION BULLETIN COMMUNITIES AND FACILITIES

Information Bulletin Communities and Facilities

Meeting Date: 29 April 2014

Attachment No: 1

COMMUNITIES AND FACILITIES

1 ADMINISTRATION

1.1 Community Assistance Program

10 applications to the Community Assistance Program were received during the month of March 2014. The applications were assessed and 8 were recommended for funding for the total amount of \$9,927.

Details of the successful applications are as follows:

Applicant	Project	Amount
Australian Breastfeeding Association	ABA 50th Birthday Garden Party	\$238
Sri Lankan Assoc of Central Qld	Sri Lankan New Year Celebration	\$200
Autism Queensland	Go Blue for Autism Fundraiser	\$368
QSquash Central Region Inc.	Queensland Junior Squash Championships	\$3,000
CQ Multicultural Association Inc.	Multicultural Dinner and Fun Talent Quest	\$1,000
Former Origin Greats Ltd	FOGS Indigenous Employment, Careers Expo	\$3,000
Ridgeland and District Sporting and Agricultural Association	Reseal floor in clubhouse kitchen, toilet block	\$1,721
Gracemere Bowls Club	Electrical upgrade	\$400
TOTAL		\$9,927

1.2 Community Hall Hire – March 2014

Facility	Total Hire Sessions
Gracemere Community Hall	72
Mt Morgan School of Arts	3
Calliungal Youth Centre	1
Bauhinia House	34
Schotia Place	51

1.3 Community Safety

A total of 4 requests were received from Queensland Police Service for the month with downloads of CCTV footage supplied for all 4 of the requests.

1.4 Community Development

Community Capacity Building Program

The following sessions in our 'Parenting in Today's World' program to be held in Rockhampton and Mount Morgan have been confirmed:

- 3 sessions of '123 Magic' in July
- 6 sessions of 'Tips on Parenting' in August to September
- 3 sessions of 'How to Talk so Kids will Listen' in September to October.
- 3 sessions of 'Living with Teens' in May, June and July
- 'Promoting Sexual Health and Personal Safety in Young People' in May
- 'Teaching Children Online and Personal Safety in May and August

These sessions have been organized to be delivered by practitioners from Anglicare, Family Planning Queensland and Newstart Psychology and Counselling.

Access and Equity

The Rockhampton Community Access and Equity Reference Group raised the following issues at the March meeting:

Issue	Date	Action	Responsibility for Identified Action
Airport invite to test newly installed disability toilet doors	06/03/14	Des Ryan and people with a range of disabilities tested the new toilet doors as part of the promotion and public announcement	Airport
Airport Disability drop-off zones	10/03/14	Request to review and comment on new disability parking proposal which was sent out by email and dealt with promptly with replies/input within two weeks	Airport
Promoting the Rockhampton Community Reference Group	11/03/14	Council cannot give out any contact details but the Chair will write a letter for support/promotion which can then be emailed to the list.	Communities and Facilities
Recharge Scheme	12/03/14	License Agreement received from Recharge Scheme Australia has been signed, with sites to be Rockhampton Regional Library and the Airport, with opportunities for local businesses and organisations to be involved in the future.	Communities and Facilities
Pub Crawl	02/02/14	The next Rockhampton Pub Crawl will be on Friday 11 April starting at 4pm with a workshop at Customs House followed by visits to 3 or 4 local Pubs in the immediate area. Suggestions to target the Master Builders Association and Housing Industry Association to raise awareness of access issues. Conduct a survey of staff, noise, music plus an IT tool to help with site planning for electric mobility scooter or wheelchair access for house or business.	Community Reference Group

The next Rockhampton Reference Group meeting is scheduled for Wednesday 2 April at 12.30pm, in the Fitzroy Room Rockhampton Regional Library.

International Women's Day Celebration

A very successful IWD event organized by the Library and Multicultural Officer was held at the Rockhampton Regional Library on Saturday 8 March featuring storytellers from a range of culturally and linguistically diverse communities. The event showcased stories of 'love and dress' from different viewpoints, with stories about traditional and modern African dress; a necklace imbued with secret recipe information; customs associated with weddings; a mother's painted dress; a delicate petticoat; Dutch clogs and their use; a Rebozo birthing shawl; vintage high couture; Indian dance costume, and the story of significant Russian women in IWD history.



The morning concluded with a short interactive IWD quiz and a shared lunch. The event was a collaborative venture with the Multicultural officer, and attracted excellent media coverage with Channel 7 News profiling the event. An oral history was recorded with one of Rockhampton's first Filipino families as part of the event and deposited into the Central Queensland collection.

100 people covering 19 different nationalities including South Africa, Mozambique, Kenya, Zimbabwe, Thailand, Philippines, China, Germany, Croatia, Netherland, Fiji, South Sea Islander, New Zealand, Congo, Iran, Afghanistan, India, Russia and Bangladesh attended this event and shared their stories of significant memories and culture behind the pieces of fabrics.

Millicent Marumba and Aunty Isabel Cora



2014 International Women's Day celebrations

Harmony Day Celebration

Rockhampton Regional Council and Multicultural Development Association (MDA) work in partnership to celebrate Harmony Day with Chai Time – Aromas from around the World being the theme. Tasting chai or teas from around the world formed the basis of Harmony Day celebrations held at the Rockhampton Regional Library on Saturday 22 March. The colourful and vibrant event attracted a good community response which was a collaborative event organized by the Library, Multicultural Officer and the Multicultural Development Association (MDA). The *Chai Time: Teas from around the world* began with an exhibition of a cultural dance in the library foyer before moving into the Fitzroy Room for a short presentation from MDA about the history and culture of teas.

Tea storytellers from the community then invited guests to a 'tea tasting' at various stands set up in the Exhibition space and courtyard of the library. Tea stories and traditional ritual tea brewing ceremonies from Iran, Japan, the Philippines, Malaysia, Afghanistan, Vietnam and Australia were shared with participants with a number of library patrons dropping in to talk to community members exhibiting. The event proved to be an accessible and enjoyable cultural learning experience for all, with good media coverage in *The Morning Bulletin* promoting the activity.

120 people attended the event representing 19 nationalities with people from Afghanistan, Malaysia, Philippines, Iran, Vietnam, Australia, Britain, Japan. Other participants were from India, Sri Lanka, Congo, Fiji, Bangladesh, Philippines, Vanuatu, Vietnam, Iran, United Kingdom, Scotland, German, Thailand, Korea and Papua New Guinea.



Chai time for Australian and Japanese 'tea' storytellers

2 LIBRARIES

2.1 Community Programs

Lively Babies

Over 130 parents and infants attended sessions at the libraries during the month. The sessions held at the Rockhampton Regional Library now also incorporate a session held as part of the section's community capacity building program. During March this involved Debra Robson from Queensland Health Bowel Screen presenting a short, informative talk to parents and carers attending.

Lively Stories

A popular 'Easter' theme was explored at the libraries with stories, chants, songs, puppets, stories and crafts attracting over 200 participants.

Beautiful stories from other cultures were also shared with toddlers this month as part of Harmony Day themed storytelling activities. Local community members from the Congolese and Liberian community delighted young attendees at the North Rockhampton Library with prop-based stories about clothing and customs, while the Multicultural Officer shared various stories on cultural dolls, musical instruments and books from different nationalities and also read books from the Philippines to the young children and 35 other participants.



Orientation

The entire group of Year 8 students from Heights College visited the Rockhampton Regional Library in the final week of the school term to discover the range of resources and services on offer, and to find out about library membership. Of particular focus was an introduction to online databases relating to social science research.

Disability Access

Clients have been enjoying use of the Aladdin Colour CCTV at the Rockhampton Regional Library to enhance their reading. The unit allows magnification of text with different colour contrasts to increase access and reading enjoyment. Patrons with cochlear implants enjoy using the books and CD kits to increase their reading confidence and use of new technology.

Friday Morning Classic Movies

The classic 1949 version of *Little Women* starring Elizabeth Taylor and June Allyson was screened in the Fitzroy Room at the Regional Library attracting keen viewers. Movies are shown on the last Friday of the month and provide patrons with a different library experience.

Lively Book Clubs

Caroline Brothers confronting and compelling story of human trafficking in *Hinterland* led to some polarised viewpoints with Silver Wattle Book Club members at the Mount Morgan Library. Peter Matthessen's older publication *Snow Leopard* was a popular choice for Lively Book Club members at the Rockhampton Regional Library this month, while the Book Club meeting at the North Rockhampton Library attracted an intergenerational audience of book lovers with passionate book discussion.

TechnoTots

A bouncy, energetic ICT learning session was held in the Library Technology Centre training room as part of the monthly 'TechnoTots' program. The intergenerational training program provides relaxed learning opportunities and hands-on engagement with technology.

Lively Knitting and Crochet Book Clubs

The slightly cooler autumn weather and the release of information about the 2014 Homeless Connect event has galvanised members at all of our knitting groups with over 90 participants busily stitching each month. The groups provide an important social network for many of the attendees with a solid core of crafters ensuring the success of the initiative.



Sharing knitting tips at the Lively Knitting and Crochet Book Club

Lively Conversational Corner

Members of the Lively Conversational Corner assisted at the International Women's Day and Harmony Day events at the Regional Library, providing valued support, and using the opportunity to practise their conversational English skills with attendees.

Lively Cultural Dance

Library patrons wandering into the Rockhampton Regional Library on a Saturday afternoon were drawn to the Fitzroy Room where 24 drummers were learning South African drum 'riffs' on djembes as part of the monthly Lively Cultural Dance program. The hypnotic rhythms and 'call and response' sequences taught by WISE member Liezel Szency delighted keen participants of all ages, with excellent feedback received from all quarters. Liezel provided an insight into African Drum Cafes and drumming circles as well as her personal experience of meeting and playing for South African leader Nelson Mandela. The Sue Kraatz African Drum collection housed at the Rockhampton Regional Library was used for the program.



Lively Cultural Dance Drumming workshop

Participation for month of March 2014

Program	Library	Date	Participants
Lively Conversational Corner	Rockhampton Regional	1/3/14	7
Lively Trovers	Rockhampton Regional	5/3/14	3
Lively Knitting and Crochet	Rockhampton Regional	5/3/14	20
Lively Stories – Harmony Day	North Rockhampton	6/3/14	53
Lively Babies – Parenting program	Rockhampton Regional	6/3/14	49
Lively Babies	Rockhampton Regional	6/3/14	61
Lively Knitting and Crochet	Mount Morgan	7/3/14	5
International Women's Day	Rockhampton Regional	8/3/14	100
Lively Book club	Mount Morgan	10/3/14	5
Lively Stories – Harmony Day	Rockhampton Regional	11/3/14	76
Lively Babies	North Rockhampton	12/3/14	8
Lively Knitting and Crochet	Rockhampton Regional	12/3/14	25
Lively Book club	Rockhampton Regional	12/3/14	11
Lively Trovers	Rockhampton Regional	12/3/14	2
Lively Knitting and Crochet	Mount Morgan	14/3/14	5
Lively Conversational Corner	Rockhampton Regional	15/3/14	7
Lively Knitting and Crochet	Rockhampton Regional	19/3/14	17
Lively Trovers	Rockhampton Regional	19/3/14	2
Lively Stories – Easter Bunnies	North Rockhampton	20/3/14	22
Lively Babies	Rockhampton Regional	20/3/14	53
Lively Book Club	North Rockhampton	21/3/14	3
Lively Knitting and Crochet	Mount Morgan	21/3/14	5
Harmony Day – Chai Time	Rockhampton Regional	22/3/14	125
Lively Stories	Mount Morgan	24/3/14	4
Lively Stories – Easter	Rockhampton Regional	25/3/14	64
Lively Knitting and Crochet	Rockhampton Regional	26/3/14	8
Lively Trovers	Rockhampton Regional	26/3/14	2
Lively Babies	North Rockhampton	26/3/14	24
TechnoTots	Rockhampton Regional	27/3/14	13
Lively Knitting and Crochet	Mount Morgan	28/3/14	5
Friday Classic Movie	Rockhampton Regional	28/3/14	4
Lively Conversational Corner	Rockhampton Regional	29/3/14	7
Lively Cultural Dancing	Rockhampton Regional	29/3/14	26
School orientation	Rockhampton Regional	31/3/2014	72
TOTAL			893

2.2 Collections

Stock Statistics

Format	Accessions	Withdrawals	Total Stock
Books - lending	1,532	2,114	162,404
Non-lending (includes special collections)	10	170	22529
Audiovisual	243	20	18,046
Nonbooks (toys, sports equipment etc)	-	5	661
eContent	179	-	2592
Total Stock	1,964	2,309	206,232

Donations

A copy of one of Australia's first bestsellers of Australian publishing was recently donated to the library's special collections. *The Picturesque Atlas of Australasia* (1886) Vol II uses narrative and over 800 exquisite wood engravings to describe Australia of the time. References to Rockhampton, Mount Morgan and surrounding gold fields are fascinating, as are the descriptions of commercial, shipping and land use, and references to different cultural groups living in the area.

Conservation projects

History Centre staff are currently preparing the Mercer Studio Collection for digitisation. This involves assessment of each negative, sorting, and isolating any contaminated stock in the collection. The collection contains a significant record of the region's social history.

Staff are also undertaking conservation work relating to the Rockhampton City Council Minute Books held in the library's archives. Large leather-bound registers from the 1860s have been gently cleaned and assessed as part of ongoing maintenance of the collection



Mercer Studio Collection

2.3 Utilisation for March 2014**Visits**

Library	Recorded visits
Rockhampton Regional	14890
History Centre	165
North Rockhampton	4907
Mount Morgan	2233
TOTAL	22195

Reservations and Inter-library loans

Library	Inter-library loan	Reservations
Mount Morgan	39	401
North Rockhampton	28	785
Rockhampton Regional	48	933
Outside Libraries	35	-
OPAC	-	368
TOTAL	150	2487

Loans and Membership

Library	Loans	New members	Active members
Mount Morgan	1880	8	661
North Rockhampton	12087	36	7050
Rockhampton Regional	23900	156	12882
eContent	399	-	-
TOTAL	38266	200	20593

2.4 Technology Centre

Training

The Library Technology Centre hosted the Central Queensland training of the accounting program MYOB.

Organisers of the training were exceptionally impressed with the computer lab facilities offered and the efficient organisation of the staff who ensured that the required MYOB software was pre-loaded on to each computer. It is anticipated that further training in MYOB will be required throughout the year.

Hiring the facilities to corporate clients provides a revenue stream for the Centre and the room hire program is being promoted throughout the business community.



“The Productive Aging through Community Education” program has now concluded. 11 participants were provided with 20 hours of computer training designed to accelerate their computer awareness and confidence levels. This was a joint venture between the Cerebral Palsy League and the Technology Centre with a grant of \$3200. The program received extremely positive feedback from all participants.

A new volunteer trainer will commence with the centre in May, and with extensive experience in teaching employment skills, he will deliver a 6-hour program covering job seeking skills, writing effective resumes and cover letters. Potential links with other employment agencies are currently being explored.

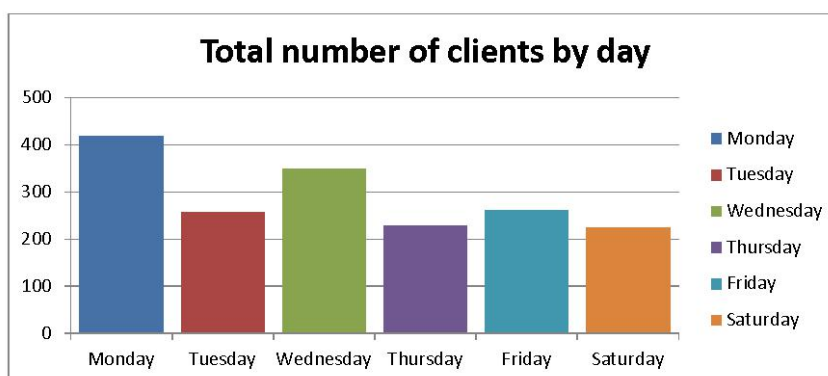
Staff attended Windows 8 training in anticipation of receiving the new touch-screen computer which has been provided by the Broadband for seniors program.

Course	Contact hours	Participants
Community Training		
Using Windows 7	128	24
Introduction to Word 2010	48	9
Windows 8 Workshop	48	24
Personal & Computer Security	42	12
Email Made Easy	50	10
Keyboard and Mouse	38	10
PowerPoint 2010	12	6
Total community training hours, participants	366	95
Commercial Training		
Productive Ageing through Community Education	220	11
Room Hire – MYOB Boot Camp	48	12
Total Commercial training hours, participants	268	23
Overall training hours, participants	634	118

Public Access

Client group	Participants	Hours of use
General community	1744	1332
Cerebral Palsy League	23	136
60s and Better	6	20
U3A	20	40
CQLUG	5	10
Total	1798	1538

Graph showing usage by day



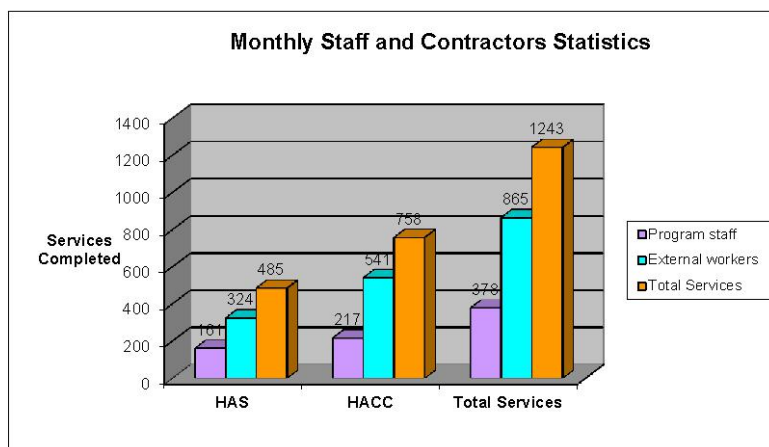
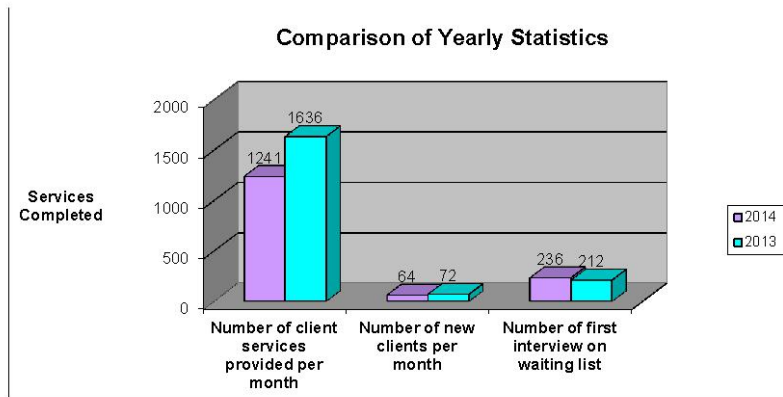
3. HOME ASSIST SECURE

Review

The Self-Assessment Workbook for the Institute for Healthy Communities Australia (IHCA) review of HACC funding. The review will be focussed on under 65s and will be carried out over a few days, beginning on 15 April. As well as reviewing documentation the assessors interview clients to gauge satisfaction with the service provided.

Services Provided – HAS and HACC Maintenance and Minor Modifications

Service	March 2014	March 2013	2013 – 14 YTD	2012 – 13 YTD
Incoming calls	1205	1838	12118	18472
Outgoing calls	2377	2478	22257	17569
Jobs completed	1241	1636	12344	15362
New clients	64	72	601	842
Total active clients	11122	10913		



HACC Major Home Modification Services

Service	March 2014	March 2013	2013 – 14 YTD	2012 – 13 YTD
Referrals received	6	5	73	76
OT assessments	8	4	55	49
Jobs completed	9	0	33	34
Funding provided	\$ 33,338.60	\$ 0.00	\$ 181,972.42	\$ 311,599.82
Client contribution	\$ 33,338.60	\$ 0.00	\$ 220,972.42	\$ 331,549.42

4. CHILD CARE

National Quality Standard

Work continued on reviewing the Quality Improvement plan actions to enhance programming techniques in preparation for the next ratings assessment due this year.

Utilisation

Long day care remains at 100%, with Occasional Care figures continuing to indicate less demand for this type of care.

Hours and Places	March 2014		March 2013	
	Long day care 20 days	Occasional care 20 days	Long day care 21 days	Occasional care 20 days
Places	27	15	27	15
Hours available	5940	2700	6237	2700
Hours utilised	5940	1044	6237	1566
Utilisation rate	100%	39%	100%	58%

9.2 INFORMATION BULLETIN FOR ARTS AND HERITAGE FOR MARCH 2014

File No: 1464
Attachments: 1. Information Bulletin Arts and Heritage for March 2014
Authorising Officer: Michael Rowe - General Manager Community Services
Author: Peter Owens - Manager Arts and Heritage

SUMMARY

The report provides information on the programs and activities of the Arts and Heritage section for March 2014

OFFICER'S RECOMMENDATION

THAT the information bulletin reporting on the programs and activities of the Arts and Heritage section for March 2014 be received

COMMENTARY

The Arts and Heritage section has responsibility for the following areas:

1. Art Gallery
2. Heritage Services
3. Venue Operations
(Pilbeam Theatre, Walter Reid Cultural Centre, Rockhampton Showgrounds)
4. Events
5. Creative Capricorn

INFORMATION BULLETIN FOR ARTS AND HERITAGE FOR MARCH 2014

Information Bulletin Arts and Heritage for March 2014

Meeting Date: 29 April 2014

Attachment No: 1

ARTS AND HERITAGE

1. Art Gallery

Exhibitions

Continuing Exhibitions:

- *Ah Xian: Metaphysica*
- *The Wandering: Moving images from the MCA Collection*
- *Our Friends: Acquisitions by the Friends of Rockhampton Art Gallery*
- *Cream: Four decades of Australian art*

New Exhibitions:

- *Strange Arrangements: Abstract prints from the collection*

The Gallery's landmark touring project *Cream: Four decades of Australian art* continued during March with many repeat visits from local art lovers. The Gallery staff has been working behind the scenes liaising with the transport company and crate manufacturers to ensure that the collection is safely transported while on tour. A ninth venue for the exhibition has also been confirmed – Toowoomba Regional Art Gallery.

At the end of March the collection exhibition *Strange Arrangements* opened to the public. The exhibition was selected by Collections Officer Thomas Degotardi who also undertook all of the framing and matting for the exhibition. Many of the prints included in the exhibition have never been on public display before.

The collection work *Jockey, horse and aeroplane* by Qld artist Sam Fullbrook (1922–2004) was packed and transported to Brisbane on loan to the forthcoming exhibition *Sam Fullbrook: Delicate Beauty* at Queensland Art Gallery | Gallery of Modern Art. At the close of this exhibition, the work will re-join the tour of the *Cream* exhibition at Western Plains Cultural Centre, Dubbo NSW.

Public Programs

During March *Good Brew Tuesday* in March was presented by Rob Hughes, President of the Friends of the Gallery and Tracy Cooper-Lavery, Gallery Director who spoke about the exhibition *Our Friends* and a short history of the Friends group.

Participation

Program	March 2014	2013-14 YTD	2012-13 YTD
Rockhampton Art Gallery			
Exhibitions	681	14090	9912
Programs		2656	2577
- Education/school groups (2)	63		
- Adult groups (1)	10		
- <i>Good Brew Tuesday</i>	17		
Total visits			
Outreach programs			
		1777	2683
Total participation	771	18523	15172

2. Heritage Services

Archer Park Rail Museum

The Friends of Archer Park commenced management of the Archer Park Rail Museum on 1 April 2014.

The replacement of sleepers on the tram track is continuing and a minor steam leak on the Purrey tram is being repaired by Council staff.

Rockhampton Heritage Village

Despite rain and overcast conditions, 1595 attended the March Markets and there were 137 stalls on site.

The Queensland Police Service held a Road Safety Day on site. The event, which included demonstration by Fire and Rescue and the Capricorn Helicopter Rescue helicopter landing in the Village oval, was attend by 590 people.

A series of dates have been finalised to host Country Music Morning Teas in the Shearing Shed with the first one being held on 22 April. Local country music artists (Nell Carter, Ned Dodd, Greg Rae and Gunsmoke, to name a few) have volunteered to perform at each morning tea. Volunteers will be making and serving the morning tea, supervised by our Function Co-ordinator. The morning teas will be assessed at the end of the year to see if there is enough interest to continue them in 2015.

Visits to Heritage Sites

Program	March 2014	2013-14 YTD	2012-13 YTD
Archer Park			
Tour groups	0	3	18
General visitors	112	1509	2677
Other Events	0	847	16
Tram rides	61	1140	1426
Total visits	112	2576	3180
Rockhampton Heritage Village			
Tour groups	3	71	56
General visitors	105	2446	2515
Markets	1	5	3 Two events cancelled due to wet weather
Other events	590	6983	14915
Total visits	2390	31511	33903
Total Visits Heritage sites	2502	34087	37083

Shearing Shed

Measure	March 2014	2013-14 YTD	2012-13 YTD
Functions	4	40	44
Participants	499	5925	6507

3. Venue Operations**Pilbeam Theatre**

The Pilbeam Theatre's 35th birthday present to the young people of the region – enabling them to see selected performances for \$1 per year of their age – has been a great success. The Pilbeam Theatre turns 35 in 2014 and to celebrate, people aged 35 or under can see shows in the theatre's 2014 See It Live season for \$1 per year of their age. The take up rate of the deal in the first two shows of the season has been good, with a noticeable increase in sales to people in the 35 years and under age group for both Shake&Stir Theatre's 1984 and Jesus Christ Superstar.

Shake and Stir Theatre returned to the Pilbeam Theatre in March with their adaptation of George Orwell's 1984. Described as being "a terrifically frightening theatrical event set against a towering wall of plasma screens", 1984 was the second adaptation of an Orwell book performed by the company (Shake and Stir performed Animal Farm in 2013).

Move over The Boy From Oz, Rockhampton Regional Council's latest production, Jesus Christ Superstar is now officially the highest selling Council-produced musical ever staged at the Pilbeam

Theatre. Over 4500 people saw the production, just beating its nearest rival The Boy From Oz (2011). Directed by Karen Crone, it was the latest in a long line of shows produced by Rockhampton Regional Council featuring some of the region's finest performers under the direction of a professional creative team.

Selected Facebook comments – Jesus Christ Superstar

That was wonderful today. Excellent musical and amazing special effects

Saw the show Friday night; words just can't describe how it felt! It's up there with the performances of Jon English, Marcia Hines, & cast, back in the '70s in Sydney. This show is a must-see for all!!!

Do NOT miss this show !!! Saw it Friday night.... Simply superb !!!

Went on Sunday, What an excellent performance. We certainly have some very talented people here.

Fantastic show. Please do not miss this one. We have so many talented performers in this area.

Amazing show- the best Jesus Christ superstar I have seen. I don't think I breathed at all during the last 15 minutes. Well done to everyone involved. I thought peg's rendition of "gethsemene " was exceptional.

The Pilbeam Theatre was the venue for a blast from the past in March – courtesy of English rock group Sweet. The group had many hits in the 1970s including Fox on the Run, Ballroom Blitz, Teenage Rampage and Hell Raiser.

Showgrounds

The Rockhampton Showgrounds was a busy place in March with several events attracting thousands of people. CQ Expo was held on Wednesday and Thursday 19 and 20 March. Representatives from the resource and industry sectors took the opportunity to generate industry contacts and find out about products and services.

The Handmade Expo is fast becoming a one of the biggest craft exhibitions in the region. Thousands attended the regular event, held on Saturday 8 March.

The Rockhampton Finch and Parrot Social Club will held its annual bird sale, featuring parrots, finches, budgerigars, love birds and canaries at the Rockhampton Showgrounds on Saturday 8 March.

The Rockhampton Speedway held its regular meet at the Showgrounds on Saturday 1 March.

Walter Reid Cultural Centre

Tenants of the Walter Reid Cultural Centre held another of its popular Open Day on Saturday 15 March. The day gave members of the public an opportunity to 'come and try' some of the artforms that are practised in the Centre.

Statistics

Program	March 2014	2013-14 YTD	2012-13 YTD
Pilbeam Theatre			
Performances	8	82	84
Attendances	5566	37824	35636
Box Office			
Tickets sold	4809	46895	49899
Walter Reid Cultural Centre			
Venue hires	57	601	629

Rockhampton Showgrounds			
Venue hires	16		

4. Events

Twilight Movie

Rio screened at Riverside Rockhampton on Friday 7 March before an audience of 171.

ANZAC Day 2014

A meeting of the ANZAC Day organising committee was held on 26 March with eleven community groups represented.

Rehearsals for pre-dawn service are scheduled with the military services on Tuesday 22 and Thursday 24 April. There are significant changes to the traffic arrangements for the pre-dawn service at the Botanical Gardens. Spencer Street between Agnes Street and Anne Streets and Anne Street at the intersection of Penlington Street will be closed to vehicular traffic between 4am and 5.30am. Residents will be advised by letter drop and road closure notices in the Morning Bulletin.

This year 30 schools and 52 groups will participate in the march with information provided with clearer march instructions including photos of the marshalling and dispersal areas. A risk assessment of the route with Dan Rough, marked the road works in Archer Street as a potential "bottle neck" for the march. John Jones Supervisor Civil Ops has advised us that they are doing everything they can but the project has fallen behind schedule. John also advised that he has instructed the crew that the days leading up to ANZAC Day to repair any potholes around that area and to make Archer Street as safe as they can before the day.

The Deputy Mayor, Cr Tony Williams will take the official role for the Rockhampton ANZAC Day Services with General Manager, Communities Mr Michael Rowe acting as MC.

Relocating the plinth to in front of the catafalque guard will comply with military protocol and provide additional shade for the seated audience. RRC Park staff assigned to Riverside Park will assist with setup of 200 chairs. A small refreshment area next to the car park, will replace the VIP Saigon Saigon function.

Rockhampton Show

The show team is working well. Sponsorship, entertainment, sites and schedules are ongoing. Operational meetings are scheduled with the Park unit, waste and emergency services. Advertising and media have been finalised. The Road Closure has been submitted to traffic police for approval. This year, opening times have been changed from 9am to 8.30am. Overall the show is progressing well, on time and on budget.

5. Creative Capricorn

2014 Program Launch

Creative Capricorn launched the 2014 program on Wednesday, 5 March. 40 people attended. Warriors' Descendants Dancers performed and Robina Mann gave the Welcome to Country. Rod Ainsworth gave an overview of the program which is now available at www.creativecapricorn.com.au

Full Tilt Film Festival

Producers have been commissioned and discussions with the community have begun. A partnership agreement with Darumbal Community Youth Services Inc has been signed to work with Creative Capricorn in the development of the Indigenous Stories section of the Festival. Weekly workshops are occurring through DCYS and producer Kaylene Butler on the "Indigenous Stories" component of the Festival. Peter and Emily Szilveszter from Living Lens have begun attending meetings and engaging with the multicultural community towards the development of the "Immigration Stories" part of the Festival and Tom Hearn from Bush TV will be working towards the broader "Regional Identity" component. The Full Tilt Film Festival celebrates stories from the

Rockhampton Region and will be presented in free public events on 6 July, 31 August and 27 September respectively.

Free Arts Workshops

Creative Capricorn has launched its program of free weekly arts workshops at the Walter Reid Cultural Centre (kids workshops) and Botanic/Kershaw Gardens (family workshops). These workshops are held at 1-3pm every Saturday. The program is available at www.creativecapricorn.com.au. The Creative Capricorn team is working hard to promote the workshops via social media and traditional media. There has been some good coverage to date. A series of radio advertisements has gone to air on the Sea FM. Numbers at Walter Reid Cultural Centre have been excellent but further promotion of the Gardens workshops is required. Meetings have been held with Gardens staff to discuss strategies.

Art Sales Opportunities

Creative Capricorn facilitated a meeting between potential art sales outlets (Rockhampton Art Gallery and Botanic Gardens Kiosk) and an invited group of artists to discuss opportunities for the sale of locally made art products at these outlets. The small meeting was held at the Rockhampton Art Gallery on Wednesday, 2 April. Discussion about markets, price points and products that sell was very productive. As a direct result of this meeting, Creative Capricorn will host a mini "arts market" in June which broadens the discussion and enables local artists to pitch their work to retail outlets, designers, architects, developers and any other potential markets.

Artists Transformation School

Four local artists have enrolled with the Auspicious Arts Incubator in Melbourne to develop their businesses through the new online Artist Transformation School. Creative Capricorn has subsidised 75% of these artists' fees. John Paul Fischbach has visited Rockhampton twice to offer the "Smarter Arts Marketing Workshop" in 2012 and to discuss arts incubation late last year. It is great that this ongoing relationship has been fostered with an organisation providing excellent service to artists and the arts sector nationally.

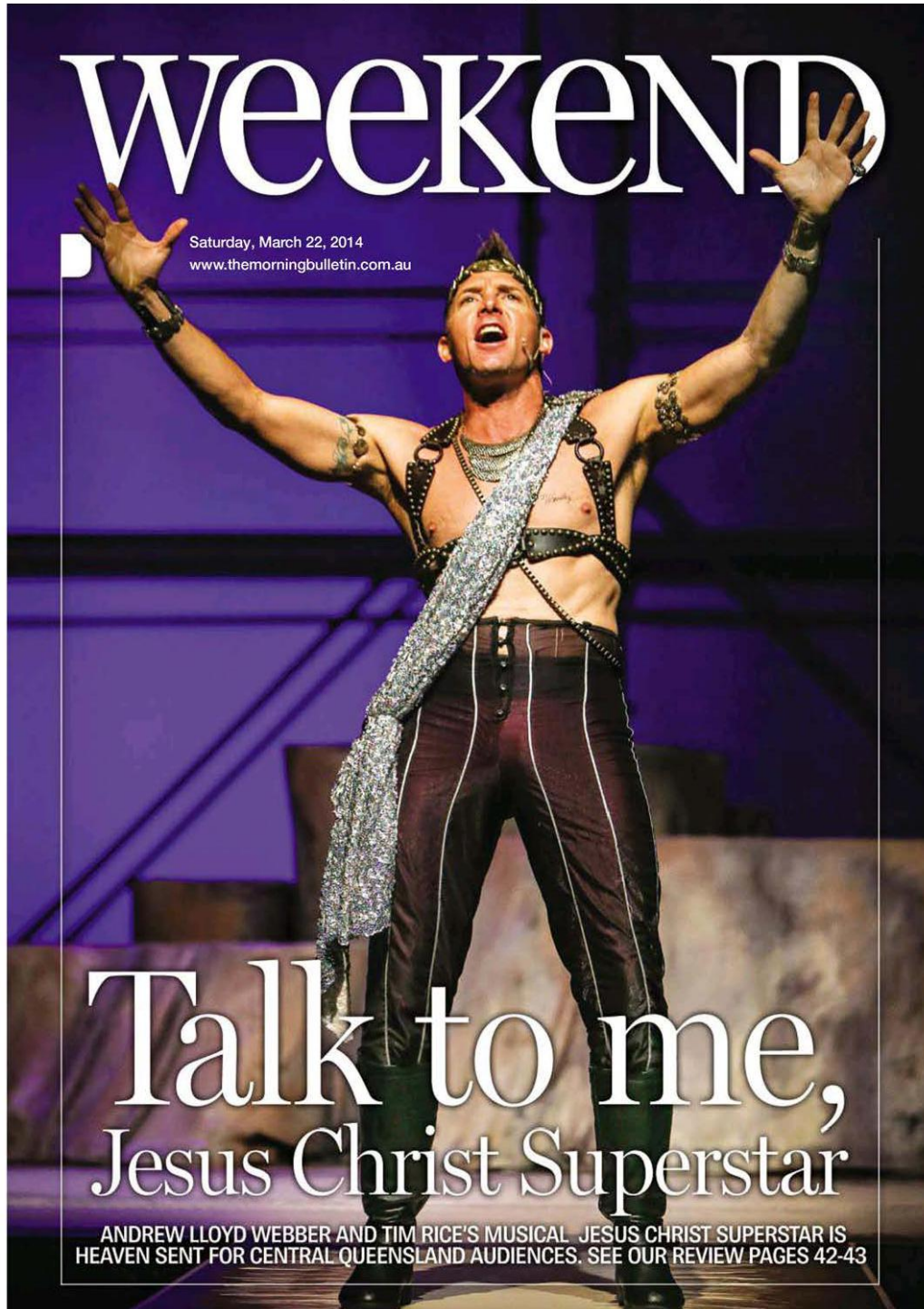
6. Volunteers

Hours volunteered

Site	March 2014	2013-14 YTD	2012-13 YTD
Art Gallery	232	2769	2319
Archer Park Rail Museum	413	4615	5028
Rockhampton Heritage Village	3465	25744	30515
Pilbeam Theatre	335	3873.75	
Total hours	4445	37001.75	

3/24/2014

The Morning Bulletin ePaper - The Morning Bulletin - 22 Mar 2014 - Page #41



WEEKEND

Saturday, March 22, 2014
www.themorningbulletin.com.au

Talk to me, Jesus Christ Superstar

ANDREW LLOYD WEBBER AND TIM RICE'S MUSICAL JESUS CHRIST SUPERSTAR IS HEAVEN SENT FOR CENTRAL QUEENSLAND AUDIENCES. SEE OUR REVIEW PAGES 42-43

<http://themorningbulletin.newspaperdirect.com/epaper/services/OnlinePrintHandler.ashx?issue=8996201403220000000001001&page=41&paper=A4&top=...> 1/1

3/24/2014

The Morning Bulletin ePaper - The Morning Bulletin - 22 Mar 2014 - Page #42

WEEKEND Jesus Christ Superstar



TALENTED CAST: Familiar faces as well as the fresh ones are all working together for the latest production of Jesus Christ Superstar.

PHOTO: ALLAN RENNIKA



AMY HAYDOCK

Super performance is sure

Classic tale of Christ's dramatic final days brought to life in Jesus Christ Superstar

“I HONESTLY think if the Rock-hampton audiences don't stand up for this they're either incredibly lazy or incredibly spoilt.”

Director Karen Crone in her sixth year working with Rockhampton Regional Council productions was overflowing with praise for her cast as she explained the creativity and passion that had gone into their last effort – Jesus Christ Superstar.

It's one of Andrew Lloyd Webber and Tim Rice's greatest successes, written when they were just 21 and 25 years old respectively.

The young writing team had just had their first success with Joseph and the Amazing Technicolor Dreamcoat when they turned to the dramatic story of the last days in the life of Jesus Christ.

But, as Karen explains, this story is about Judas Iscariot and the politics surrounding Jesus Christ during the



dramatic last seven days of his life. One of the most controversial and iconic rock operas of its time, proving its ability to transcend eras or cultures, the universal and timeless tale has again reared its head onto the Rockhampton stage with a tremendous

It's hard not to get goosebumps as I watch the opening scenes, as the cast seamlessly make their way onto the stage.

explosion of colour, vibrancy and excitement.

“It's a 2000-year-old story with a '70s feel,” Karen laughed.

And as a young man stands in the left-hand corner of the dimly lit stage strumming an electric guitar, setting the

bar for what's to come, what happens next is wonderful.

It's hard not to get goosebumps as I watch the opening scenes, as the cast seamlessly make their way onto the stage.

Seeing the familiar faces as well as the fresh ones all working together in unison proves why this company is so strong.

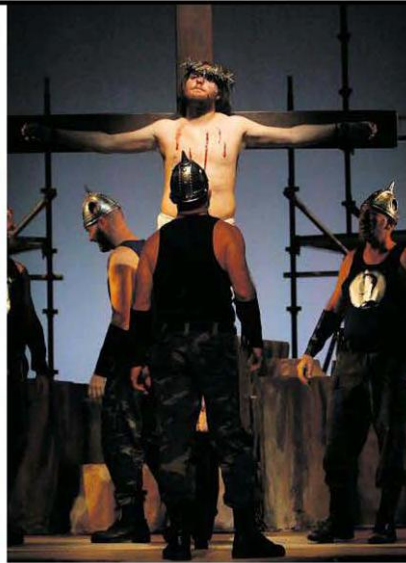
As Karen said: “It's about having respect for one another and embracing it all together, learning off each other... it's one of the most essential human medicines.”

As soon as Brad Villiers takes the spotlight as Judas, I'm blown away by his vocal ability.

He stands tall and strong, and doesn't stumble on a note throughout the entire show, and seeing as though every word is sung, it wouldn't be an easy feat.

3/24/2014

The Morning Bulletin ePaper - The Morning Bulletin - 22 Mar 2014 - Page #43



DU
The costume, set design, lighting, music and choreography allow this production to reach its full potential and take it to such a professional level of performance.

FAR LEFT: Claire Duffy as Mary Magdalene.

LEFT: Grant Pegg as Jesus.

to captivate Rocky audiences

JESUS CHRIST SUPERSTAR
When: On now for a six-performance season, concluding on Saturday, March 29.
Tickets: On sale now at the Pilsbeam Theatre Box Office, Dial n' Charge 4927 4111 and www.seetive.com.au.
How much: Priced at \$48 for adults, concessions available.

This story offers so many emotions and its portrayal by the cast is crisp and polished, allowing the audience to understand each scene as the story unfolds through song.

Painting a picture using words doesn't compare to their ability to tell this powerful story with such strong movement and vocal talent.

Stalwarts like Amanda Locker (Simon), Rhonda Janes (Annas), Grant Wolf Whitfield (Pontius Pilate), Dean Netherwood (Caiaaphas) Travis Hock (King Herrod) and, of course, Grant Pegg (Jesus Christ) are spectacular. Each bringing raw dedication and sincerity to their character makes such a difference to the enjoyment of the show, it's infectious.

Grant Pegg's commitment to playing Jesus is so strong, it's tangible, and in the final scenes leading up to The Crucifixion, it's more prevalent than ever.

Grant Wolf Whitfield plays Pontius Pilate with wit and strength, his stage presence is so solid and commanding, and his vocals are none other than brilliant.

His polished professional approach is always apparent with how he moves within this space.

I couldn't stop chuckling at Travis Hock's routine of King Herrod's Song, which was extremely funny and light-hearted amidst what it is a very dramatic and sad story.

Travis's colourful and effervescent



character as King Herrod was so much fun to watch. Claire Duffy as Mary Magdalene was a memorable performance and her voice was stunning.

The costume, set design, lighting, music and choreography allow this production to reach its full potential and take it to such a professional level of performance.

Everyone behind the scenes deserves as much praise as those in the spotlight. Whether you're religious or not, the story goes beyond the realms

of faith and shows the many sides of humanity: the cruelty, brutality as well as the love, compassion and kindness.

It was daring, shocking, funny, moving and, most of all, thoroughly entertaining and I encourage anyone and everyone to see it and support the growth of the region's talented performers.

"The show is selling really well," said Karen.

"At the moment there are still seats available for all performances but the

really good seats are on the Thursday night (March 27).

"Don't make the mistake and have to add that to your weekly confessional on Sunday," Karen said cheekily.

DRAMATIC SCENES: Grant Pegg as Jesus and Grant Wolf Whitfield as Pontius Pilate in the poignant rock opera.

PHOTO: ALLAN REINIKKA

DU The six-performance season of Jesus Christ Superstar concludes on Saturday, March 29.

10 NOTICES OF MOTION

Nil

11 URGENT BUSINESS/QUESTIONS

Urgent Business is a provision in the Agenda for members to raise questions or matters of a genuinely urgent or emergent nature, that are not a change to Council Policy and can not be delayed until the next scheduled Council or Committee Meeting

12 CLOSED SESSION

In accordance with the provisions of section 275 of the *Local Government Regulation 2012*, a local government may resolve to close a meeting to the public to discuss confidential items, such that its Councillors or members consider it necessary to close the meeting.

RECOMMENDATION

THAT the meeting be closed to the public to discuss the following items, which are considered confidential in accordance with section 275 of the *Local Government Regulation 2012*, for the reasons indicated.

13.1 Tender 11100 - Catering for Robert Schwarten Pavilion

This report is considered confidential in accordance with section 275(1)(e), of the *Local Government Regulation 2012*, as it contains information relating to contracts proposed to be made by it.

13.2 Proposed Term Lease of Reserve Lot 6 on R26251 and Lot 2 on R2616 (City Child Care Centre and Rockhampton Regional Council)

This report is considered confidential in accordance with section 275(1)(h), of the *Local Government Regulation 2012*, as it contains information relating to other business for which a public discussion would be likely to prejudice the interests of the local government or someone else, or enable a person to gain a financial advantage .

13 CONFIDENTIAL REPORTS

13.1 TENDER 11100 - CATERING FOR ROBERT SCHWARTEN PAVILION

File No: 11100

Attachments: 1. Testimonial Letter from Beef Australia for Olive Catering

Authorising Officer: Michael Rowe - General Manager Community Services

Author: Peter Owens - Manager Arts and Heritage

This report is considered confidential in accordance with section 275(1)(e), of the *Local Government Regulation 2012*, as it contains information relating to contracts proposed to be made by it.

SUMMARY

Tender 11100 for exclusive catering rights in the Robert Swarten and James Lawrence pavilions at the Rockhampton Showgrounds has now closed. Council's approval to award the contract is now required.

13.2 PROPOSED TERM LEASE OF RESERVE LOT 6 ON R26251 AND LOT 2 ON R2616 (CITY CHILD CARE AND ROCKHAMPTON REGIONAL COUNCIL)**File No:** 374**Attachments:** 1. Drawing 11/024A/CEN**Authorising Officer:** Michael Rowe - General Manager Community Services**Author:** Cheryl Haughton - Manager Community Services

This report is considered confidential in accordance with section 275(1)(h), of the *Local Government Regulation 2012*, as it contains information relating to other business for which a public discussion would be likely to prejudice the interests of the local government or someone else, or enable a person to gain a financial advantage .

SUMMARY

Council direction is sought in relation to correspondence received from the Department of Natural Resources and Mines regarding a proposed term lease for the land on which the Library and part of the Child Care Centre sit.

14 CLOSURE OF MEETING