

ENVIRONMENTAL
SUSTAINABILITY.

Rockhampton
Regional Council

SUSTAINABILITY IN ACTION!

2020 ROCKHAMPTON REGION COMMUNITY CALENDAR

Ridglands State School | Rockhampton Region

Front cover

Sustainability Champions Ridgeland State School's scarecrow for sustainability!

"Our insect hotel and butterfly watering station help invite insects to our garden and our scarecrow helps keep the birds away from our seedlings."

SUSTAINABILITY IN ACTION!

At its heart, environmental sustainability is about taking care of the environment so that the environment can continue to take care of us!

Living sustainably comes down to daily habits and choices you make, both big and small, that can have a huge environmental impact.

Use this community calendar as a prompt each month to be inspired to understand your own environmental impact and the opportunities you have to reduce these impacts in your household, at work and when you are out and about.

Check out Council's website and sign up to our sustainability e-newsletter for more inspiration, extended information and resources to assist your sustainability journey.

Let's continue to work together to strengthen our community capacity to live sustainably!



GET INVOLVED!

Being more sustainable takes action and awareness! There are plenty of sustainability activities that you can participate in locally, some are outlined in this calendar plus there are many, many more.

"You cannot get through a single day without having an impact on the world around you. What you do makes a difference and you have to decide what kind of difference you want to make."

- Dr Jane Goodall

**PLASTIC
FREE
JULY**

1-31 JULY

**NATIONAL
WATER
WEEK**

19-25 OCTOBER

**NATIONAL
RECYCLING
WEEK**

9-15 NOVEMBER

**CLEAN UP
AUSTRALIA
DAY**

SUNDAY 1 MARCH

**EARTH
HOUR**

SATURDAY 28 MARCH

**WORLD
ENVIRONMENT
DAY**

FRIDAY 5 JUNE

**NATIONAL
TREE DAY**

SUNDAY 2 AUGUST



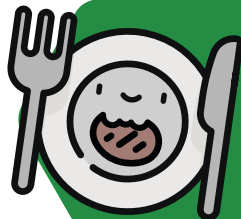
**JANUARY
2020**

Sustainability Champions - Marmor State School is reaping the rewards of the harvest!

"We are learning how to grow, harvest and cook the food we have grown. We picked the tomatoes because they were ripe. We ate some with cheese and crackers for 2nd break. We like growing our own veggies."

- Marmor State School students

| SUNDAY | MONDAY | TUESDAY | WEDNESDAY | THURSDAY | FRIDAY | SATURDAY |
|--|-----------------------|------------------|----------------|----------|--------|--|
|  Recycling Week 1 Kerbside recycling wheelie bins are collected fortnightly on the same day as your scheduled bin collection day (weekdays: Monday - Friday). School Holidays | | | 1 | 2 | 3 | 4  |
| | | | New Year's Day | | | |
|  Recycling Week 2 | 5 | 6 | 7 | 8 | 9 | 10 |
| | | | | | | 11 |
| | | | | | | |
|  Recycling Week 1 | 12 | 13 | 14 | 15 | 16 | 17 |
| | | | | | | 18 |
| | | | | | | |
|  Recycling Week 2 | 19 | 20 | 21 | 22 | 23 | 24 |
| | | | | | | 25 |
| | | | | | | |
|  Recycling Week 1 | 26 | 27 | 28 | 29 | 30 | 31 |
| Australia Day | Australia Day Holiday | Term 1 Commences | | | | |



#FIGHTFOODWASTE

There are lots of ways to save money and fight food waste - simply LOOK at what you already have in your fridge, pantry and freezer before shopping, BUY only what you need, STORE food properly, COOK to planned portion needs! - OzHarvest.

DID YOU KNOW?
RESEARCH SHOWS THAT ONE IN FIVE BAGS OF GROCERIES END UP IN THE BIN COSTING FAMILIES THOUSANDS OF DOLLARS EACH YEAR!
- OZHARVEST



FEBRUARY 2020

Sustainability Champions - Waraburra State School is caring for our catchments!

Students are showing their artworks about keeping our catchments clean next to a large stormwater drain in their school. These artworks highlight the connection from drain to catchment and some of the many native species that live in our local catchments including platypus, barramundi and our very own 'bum breathing' Fitzroy River Turtle to name a few.

| SUNDAY | MONDAY | TUESDAY | WEDNESDAY | THURSDAY | FRIDAY | SATURDAY |
|--|--------|---------|-----------|----------|--------|---|
| <div><div></div><div>Recycling Week 1</div><div>Kerbside recycling wheelie bins are collected fortnightly on the same day as your scheduled bin collection day (weekdays: Monday - Friday).</div></div> | | | | | | <div><div></div><div>1</div><div>Check Council's website for this month's Sustainability in Action! free community workshop.</div></div> |
| <div><div></div><div>Recycling Week 2</div><div>2</div></div> | 3 | 4 | 5 | 6 | 7 | 8 |
| <div><div></div><div>World Wetlands Day</div><div></div></div> | | | | | | |
| <div><div></div><div>Recycling Week 1</div><div>9</div></div> | 10 | 11 | 12 | 13 | 14 | 15 |
| <div><div></div><div>Recycling Week 2</div><div>16</div></div> | 17 | 18 | 19 | 20 | 21 | 22 |
| <div><div></div><div>Recycling Week 1</div><div>23</div></div> | 24 | 25 | 26 | 27 | 28 | 29 |
| | | | | | | |



CARING FOR OUR CATCHMENTS

Water has a flow on effect... from our homes to stormwater drains, stormwater drains to our creeks, our creeks to the Fitzroy River, our Fitzroy River to the ocean. The Fitzroy River is the largest river system flowing to the Great Barrier Reef.

DID YOU KNOW?
ROCKHAMPTON REGIONAL COUNCIL IS PROUDLY A REEF GUARDIAN COUNCIL, A STEWARDSHIP PROGRAM IN PARTNERSHIP WITH THE GREAT BARRIER REEF MARINE PARK AUTHORITY.



**MARCH
2020**

Sustainability Champions - Harnessing renewable energy at The Cathedral College!

The Tesla battery harnesses the sun's energy during the day and supplies the majority of the power required at the Boys' Boarding facility during the evening. The photo captures some of the ways that this solar energy is used.

"The battery provides us with a continuous supply of natural energy to reduce the cost of power for the running of our Boarding House."

- The Cathedral College Boys' Boarding students

| SUNDAY | MONDAY | TUESDAY | WEDNESDAY | THURSDAY | FRIDAY | SATURDAY |
|--|--------|---------|-----------|----------|--------|----------|
|  Recycling Week 2 Kerbside recycling wheelie bins are collected fortnightly on the same day as your scheduled bin collection day (weekdays: Monday - Friday). Clean Up Australia Day | 1 | 2 | 3 | 4 | 5 | 6 |
|  Recycling Week 1 | 7 | 8 | 9 | 10 | 11 | 12 |
|  Recycling Week 2 | 13 | 14 | 15 | 16 | 17 | 18 |
|  Recycling Week 1 | 19 | 20 | 21 | 22 | 23 | 24 |
| World Water Day  Recycling Week 2 | 25 | 26 | 27 | 28 | 29 | 30 |
| | 31 | | | | | |

Check Council's website for this month's Sustainability in Action! free community workshop.

International Day of Forests

Earth Hour | 8.30pm



ENERGY EFFICIENCY & POWER SAVINGS

When using electricity, just a few small changes can make a big difference! There are lots of online tools and calculators to help you do a household energy audit and manage your energy use. Making your home more energy efficient will save you money and help the environment - it's a win-win!

POWER SAVING TIPS:
 -TURN OFF POWERPOINTS WHEN NOT IN USE
 -LINE DRY CLOTHES
 -INSTALL SOLAR PANELS
 -CLOSE WINDOWS WHEN USING AIR CONDITIONERS



**APRIL
2020**

Sustainability Champions - From little things, big things grow at The Hall State School!

"At The Hall State School we have a community fruit, vegetable and herb garden planted by students and community partners. We grow fruit and veggies like corn, tomatoes, bananas, have a hydroponics system growing lettuce which we supply to our tuckshop and make our own jam from the rosella plants! We also collect our food scraps, use compost bins and worm farms, turn it into compost and put it back into the gardens." - The Hall State School students

| SUNDAY | MONDAY | TUESDAY | WEDNESDAY | THURSDAY | FRIDAY | SATURDAY |
|---|------------------|---------|-----------|----------|------------------|--|
|  Recycling Week 2 Kerbside recycling wheelie bins are collected fortnightly on the same day as your scheduled bin collection day (collections occur Monday - Friday). | | | 1 | 2 | 3 | 4  |
| | | | | | Term 1 Concludes | School Holidays |
|  Recycling Week 1 | 5 | 6 | 7 | 8 | 9 | 10 |
| | | | | | | 11 |
| | | | | | Good Friday | Easter Saturday |
|  Recycling Week 2 | 12 | 13 | 14 | 15 | 16 | 17 |
| | | | | | | 18 |
| Easter Sunday | Easter Monday | | | | | |
|  Recycling Week 1 | 19 | 20 | 21 | 22 | 23 | 24 |
| | | | | | | 25 |
| | Term 2 Commences | | Earth Day | | | ANZAC Day |
|  Recycling Week 2 | 26 | 27 | 28 | 29 | 30 | |



GROWING YOUR OWN FRUIT & VEGETABLES

One of the many benefits of harvesting your own food is that you get to eat the freshest produce possible straight from your garden! It's a great way to get your kids involved, a good use of space in your garden, a wonderful way to save money and to help the environment around your home.

DID YOU KNOW?
MOST OF THE FOOD WE PURCHASE HAS TRAVELLED HUNDREDS, SOMETIMES THOUSANDS OF KILOMETRES TO REACH YOUR PLATE.

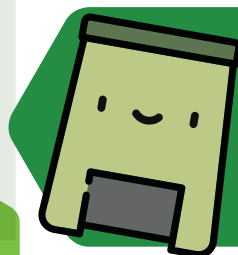


**MAY
2020**

Sustainability Champions - Compost is a hot spot at Rockhampton Grammar School!

"The composting of shredded paper, scraps of food, garden clippings and chicken manure has made soil that we use in our garden. We are throwing away less food waste and, by composting it, the soil is great quality." - Rockhampton Grammar School students

| SUNDAY | MONDAY | TUESDAY | WEDNESDAY | THURSDAY | FRIDAY | SATURDAY |
|--|----------------------------------|--|--|----------|--------|---|
| <div><div></div><div>Recycling Week 2</div><div>Kerbside recycling wheelie bins are collected fortnightly on the same day as your scheduled bin collection day (collections occur Monday - Friday).</div></div> | | | | | 1 | <div><div></div><div></div><div><div>Check Council's website for this month's Sustainability in Action! free community workshop.</div></div></div> |
| <div><div></div><div>Recycling Week 1</div><div>3</div></div> | 4 | 5 | 6 | 7 | 8 | 9 |
| <div><div><div>International Composting Awareness Week</div></div></div> | <div><div>Labour Day</div></div> | | | | | <div><div>World Migratory Bird Day</div></div> |
| <div><div></div><div>Recycling Week 2</div><div>10</div></div> | 11 | 12 | 13 | 14 | 15 | 16 |
| | | | | | | |
| <div><div></div><div>Recycling Week 1</div><div>17</div></div> | 18 | 19 | 20 | 21 | 22 | 23 |
| | | | | | | |
| <div><div></div><div>Recycling Week 2</div><div>24</div></div> | 25 | 26 | 27 | 28 | 29 | 30 |
| | | <div><div>National Sorry Day</div></div> | <div><div>National Reconciliation Week</div></div> | | | |



COMPOSTING & WORM FARMS

Just over 50% of the average general waste wheelie bin is made up of organics and garden clippings. These are put to better use in your garden as compost or mulch rather than going to landfill. Compost worms are nature's own recyclers, converting kitchen scraps and garden waste into nutrient-rich plant food perfect for the garden or potted plants.

DID YOU KNOW?
USING COMPOST OR MULCH CAN IMPROVE SOIL QUALITY, HELP SOIL RETAIN MOISTURE, AND REDUCE THE NEED FOR CHEMICAL FERTILISERS IN YOUR GARDEN.



JUNE 2020

Sustainability Champions - Avoiding plastic packaging at Emmaus College!

Emmaus College grows vegetable herbs for their Hospitality and Home Economics classes to use in place of packaged, perishable options.
"Growing our own herbs reduces purchasing plastic packaged ingredients from the shop." - Emmaus College students

| SUNDAY | MONDAY | TUESDAY | WEDNESDAY | THURSDAY | FRIDAY | SATURDAY |
|---|------------------|---------|------------------|-----------------------|------------------|--|
|  Recycling Week 1 Kerbside recycling wheelie bins are collected fortnightly on the same day as your scheduled bin collection day (collections occur Monday - Friday). | 1 | 2 | 3 | 4 | 5 | 6  |
| National Reconciliation Week | | | | World Environment Day | | |
|  Recycling Week 2 | 7 | 8 | 9 | 10 | 11 | 12 |
| | World Oceans Day | | Rockhampton Show | | | |
|  Recycling Week 1 | 14 | 15 | 16 | 17 | 18 | 19 |
| | | | | | | 20 |
|  Recycling Week 2 | 21 | 22 | 23 | 24 | 25 | 26 |
| | | | | | | 27 |
| | | | | | Term 2 Concludes | School Holidays — |
|  Recycling Week 1 | 28 | 29 | 30 | | | |

CHOOSE TO REFUSE AND REUSE

Plastic Free July is next month and now is a great time to #choosetorefuse single use plastic. Be part of the solution! You can act by: Avoiding products in plastic packaging, reducing where possible, refusing plastics that can escape as litter, recycling what cannot be avoided. Remember to 'bring your own' (BYO) reusable items instead!



DID YOU KNOW?
 COUNCIL HAS PORTABLE WATER REFILL STATIONS AVAILABLE FOR HIRE TO COMMUNITY GROUPS AND NOT-FOR-PROFIT ORGANISATIONS. CHECK COUNCIL'S WEBSITE FOR MORE INFORMATION.



**JULY
2020**

Sustainability Champions - Frenchville State School's Bush Food Garden!

"As part of Frenchville State School's First Australians Unit, students gained greater insight into the bush food the traditional Aboriginal people eat within our local area. This photo is of a beach cherry tree planted in the Bush Food Garden. It is important to understand where food comes from and how cultures lived before shops existed." - Frenchville State School students

| SUNDAY | MONDAY | TUESDAY | WEDNESDAY | THURSDAY | FRIDAY | SATURDAY |
|---|--------|---------|---|----------|--------|--|
|  Recycling Week 1 Kerbside recycling wheellie bins are collected fortnightly on the same day as your scheduled bin collection day (collections occur Monday - Friday). School Holidays (cont.) | | | 1 Plastic Free July (Month of July) | 2 | 3 | 4 Check Council's website for this month's Sustainability in Action! free community workshop. |
|  Recycling Week 2 NAIDOC Week | 5 | 6 | 7 | 8 | 9 | 10 |
|  Recycling Week 1 Term 3 Commences | 12 | 13 | 14 | 15 | 16 | 17 |
|  Recycling Week 2 | 19 | 20 | 21 | 22 | 23 | 24 |
|  Recycling Week 1 | 26 | 27 | 28 | 29 | 30 | 31 Schools Tree Day |



PLANTING NATIVES TO BRING NATURE BACK

Trees, shrubs and grasses play an important role in our streets, parks and riparian corridors, as well as in our very own backyards. Not only do they provide food and shelter for wildlife, they give the Region its unique character and provide a cooler and more attractive environment for us to live in. Find a local tree planting site and come along this National Tree Day!

DID YOU KNOW?
ROCKHAMPTON REGIONAL COUNCIL OFFERS A FREE NATIVE PLANT PROGRAM FOR LOCAL RESIDENTS. KEEP AN EYE ON COUNCIL'S WEBSITE FOR MORE DETAILS.



AUGUST 2020

Sustainability Champions - Reusable building blocks at Heights College!

"Our Year 1 students enjoyed building their very own cubby house by re-using cardboard boxes from school deliveries. We asked around to collect enough boxes which were then organised and painted to construct a brand new space for creative play. Students have also had fun by re-using postal tubes and milk containers, filling them with rice/stones to create percussion instruments during their science lessons." - Heights College students

| SUNDAY | MONDAY | TUESDAY | WEDNESDAY | THURSDAY | FRIDAY | SATURDAY |
|--|--------|---------|-----------|----------|--------|---|
| <div><div></div><div>Recycling Week 1</div><div>Kerbside recycling wheelie bins are collected fortnightly on the same day as your scheduled bin collection day (collections occur Monday - Friday).</div></div> | | | | | | <div><div>1</div><div>Check Council's website for this month's Sustainability in Action! free community workshop.</div></div> |
| <div><div></div><div>Recycling Week 2</div><div>2</div></div> | 3 | 4 | 5 | 6 | 7 | 8 |
| <div><div>National Tree Day</div></div> | | | | | | |
| <div><div></div><div>Recycling Week 1</div><div>9</div></div> | 10 | 11 | 12 | 13 | 14 | 15 |
| | | | | | | <div><div>National Science Week</div></div> |
| <div><div></div><div>Recycling Week 2</div><div>16</div></div> | 17 | 18 | 19 | 20 | 21 | 22 |
| | | | | | | |
| <div><div></div><div>Recycling Week 1</div><div>23</div></div> | 24 | 25 | 26 | 27 | 28 | 29 |
| | | | | | | <div><div>DID YOU KNOW?</div></div> |



REUSING & UPCYCLING MATERIALS

Creative reuse of items by upcycling, repairing or repurposing breathes a whole new life into the way you look at the 'DIY' world. Upcycling or buying second hand saves resources from being wasted, saves the time and labour required to make it originally (and to replace it) and saves valuable airspace at the landfill.

DID YOU KNOW?
TRENDY TRASH HAS QUALITY SECOND-HAND ITEMS AT BARGAIN PRICES! TRENDY TRASH IS LOCATED AT THE ENTRANCE TO LAKES CREEK ROAD WASTE MANAGEMENT FACILITY AND OPEN ON FRIDAY, SATURDAY AND SUNDAY EACH WEEK.



**SEPTEMBER
2020**

Sustainability Champions - St Marys is encouraging wildlife habitat!

"We are watering our plants so they can grow and drop seeds which will grow more plants. Plants create more oxygen which makes it easier for us to breath and also provides a home for bugs to live. The bugs then feed bigger animals and then those bigger animals help feed us. That is why you should water and care for the environment around you." - St Mary's students

| SUNDAY | MONDAY | TUESDAY | WEDNESDAY | THURSDAY | FRIDAY | SATURDAY |
|--|--------|-------------------------------------|-----------|----------|------------------|---|
|  Recycling Week 2 Kerbside recycling wheellie bins are collected fortnightly on the same day as your scheduled bin collection day (collections occur Monday - Friday). | | 1 National Wattle Day | 2 | 3 | 4 | 5 <div> Check Council's website for this month's Sustainability in Action! free community workshop. </div> |
|  Recycling Week 1 | 6 | 7 | 8 | 9 | 10 | 11 |
|  Recycling Week 2 | 13 | 14 | 15 | 16 | 17 | 18 |
| | | | | | Term 3 Concludes | School Holidays |
|  Recycling Week 1 | 20 | 21 | 22 | 23 | 24 | 25 |
| Sustainable House Day | | | | | | |
|  Recycling Week 2 | 27 | 28 | 29 | 30 | | |



ENCOURAGING WILDLIFE & WILDLIFE HABITAT

The outdoor areas at your home are your very own piece of potential habitat for wildlife. We can all 'bring nature back' to our yards and you don't need a big backyard to make a big difference. Creating the perfect place for native wildlife in your backyard is as easy as making sure the basics are covered – much like us, the essentials are providing food, water and shelter.

DID YOU KNOW?
OUR REGION IS HOME TO LOTS OF NATIVE WILDLIFE:

- 111 REPTILE SPECIES
- 22 FROG SPECIES
- 35 FISH SPECIES
- 359 BIRD SPECIES
- 93 MAMMAL SPECIES



**OCTOBER
2020**

Sustainability Champions - Bajool State School knows water is a precious resource!

"At Bajool State School we learn about the importance of water and how to use it wisely. We water the harvest garden using watering cans to ensure the plants get a good drink each time. The gardens are also mulched regularly and the worms fed daily to help keep the soil healthy."

- Bajool State School students

| SUNDAY | MONDAY | TUESDAY | WEDNESDAY | THURSDAY | FRIDAY | SATURDAY |
|--|--|------------------|-----------|-------------------------|--------|---|
|  Recycling Week 2 Kerbside recycling wheellie bins are collected fortnightly on the same day as your scheduled bin collection day (collections occur Monday - Friday). | | | | 1 | 2 | 3 |
| | | | | School Holidays (cont.) | |  |
|  Recycling Week 1 | 4 | 5 | 6 | 7 | 8 | 9 |
| | Queen's Birthday | Term 4 Commences | | | | 10 |
|  Recycling Week 2 | 11 | 12 | 13 | 14 | 15 | 16 |
| | | | | | |  |
|  Recycling Week 1  | 18 | 19 | 20 | 21 | 22 | 23 |
| | National Water Week & Aussie Backyard Bird Count | | | | | 24 |
|  Recycling Week 2 | 25 | 26 | 27 | 28 | 29 | 30 |
| | | | | | | 31 |



WATER USE & WATER EFFICIENCY

Water is a precious resource! Australia is the driest populated continent in the world. In our Region, most of our household water is consumed outdoors on our gardens and lawns. There are many ways to save water outdoors, from mulching, hand watering and using tap timers, to drip irrigation systems and rainwater tanks just to name a few.

DID YOU KNOW?
FITZROY RIVER WATER OFFERS A REBATE FOR RESIDENTS OF THE ROCKHAMPTON REGION WHO PURCHASE AND INSTALL WATER EFFICIENT PRODUCTS.



**NOVEMBER
2020**

Sustainability Champions - St Josephs Park Avenue recycling heros halve their waste!

Our year 4 students started a rubbish separation program (with mini bins from our P&F) and have cut our landfill rubbish down by half! The recycling bins from around the school are collected each Friday and the general waste bins are checked for items that could be recycled instead. *"We need to reuse and recycle our paper product to save our forests. I think if we don't look after the Earth now we won't have all the resources when we are adults."* - St Josephs Park Avenue students

| SUNDAY | MONDAY | TUESDAY | WEDNESDAY | THURSDAY | FRIDAY | SATURDAY |
|---|--------|---------|-----------|----------|--------|---|
|  Recycling Week 1 Kerbside recycling wheelie bins are collected fortnightly on the same day as your scheduled bin collection day (collections occur Monday - Friday). | 2 | 3 | 4 | 5 | 6 |  Check Council's website for this month's Sustainability in Action! free community workshop. |
|  Recycling Week 2 | 9 | 10 | 11 | 12 | 13 | 14 |
| National Recycling Week | | | | | | |
|  Recycling Week 1 | 16 | 17 | 18 | 19 | 20 | 21 |
| | | | | | | World Fisheries Day |
|  Recycling Week 2 | 23 | 24 | 25 | 26 | 27 | 28 |
|  Recycling Week 1 | 30 | | | | | |



RECYCLING RIGHT WITH YELLOW LID BINS

Every can, piece of paper, cardboard box, plastic container and glass bottle we put in our yellow lid wheelie bin can make a difference. Some of the greatest environmental benefits of recycling are in the conservation of energy and natural resources when recycled material, rather than raw material, is used to make a new product.



TOP TIP! CHECK PACKAGING FOR THE AUSTRALASIAN RECYCLING LABEL INFORMATION. IT HAS BEEN DESIGNED BY PLANET ARK TO HELP YOU DO THE RIGHT THING AND USE THE RIGHT BIN.



**DECEMBER
2020**

Sustainability Champions - St Paul's green gift creations!

St Pauls students created gifts using recycled materials then sold them during lunch times to raise money for Caritas Australia.
"It is important because we reused items and raised money for countries in need. This is reducing waste and is also a very fun activity."
 - St Paul's students

| SUNDAY | MONDAY | TUESDAY | WEDNESDAY | THURSDAY | FRIDAY | SATURDAY |
|---|--------|---------|-----------|----------|------------------|---|
|  Recycling Week 1 Kerbside recycling wheelie bins are collected fortnightly on the same day as your scheduled bin collection day (collections occur Monday - Friday). | | 1 | 2 | 3 | 4 | 5 <div>Check Council's website for this month's Sustainability in Action! free community workshop.</div> |
|  Recycling Week 2 | 6 | 7 | 8 | 9 | 10 | 11 |
| | | | | | Term 4 Concludes | School Holidays |
|  Recycling Week 1 | 13 | 14 | 15 | 16 | 17 | 18 |
| | | | | | | 19 |
|  Recycling Week 2 | 20 | 21 | 22 | 23 | 24 | 25 |
| | | | | | | 26 |
| | | | | | Christmas Day | Boxing Day |
|  Recycling Week 1 | 27 | 28 | 29 | 30 | 31 | |

GREEN GIFT GIVING & ECOFRIENDLY FESTIVE DECORATIONS

Waste generated by buying 'stuff' is a big problem, not just here but all over the world. This excess is particularly highlighted during the festive season so don't fall into the silly season traps. This year, why not shop locally, avoid packaging, give experiences, plan meals and reuse your decorations!

GREEN FESTIVE TIPS!

- CHOOSE REUSABLE OR RECYCLABLE WRAPPING
- USE GOOD QUALITY REUSABLE DECORATIONS AND TABLEWARE
- MAKE YOUR OWN CARDS AND USE RECEIVED CARDS FOR ARTS AND CRAFTS

SUSTAINABILITY IN ACTION!

Schools are at the forefront of educating the next generation about environmental sustainability. Educators actively work with students to make connections with local action to help sustain our local environment.

The Rockhampton Regional Council Schools Calendar Competition recognises and celebrates sustainability in action implemented by our local primary and secondary schools. All of the 'Sustainability Champions' featured in this calendar win a cash prize to support future sustainability actions within their schools plus a choice of practical sustainability tools for their school.

Be inspired to live more sustainably by the next generation of environmental sustainability champions!



Berserker State School | Rockhampton Region



GET INVOLVED AND GET IN TOUCH

Environmental Sustainability Unit
sustainability@rrc.qld.gov.au | 1300 22 55 77
rockhamptonregion.qld.gov.au/EnvironmentalSustainability