

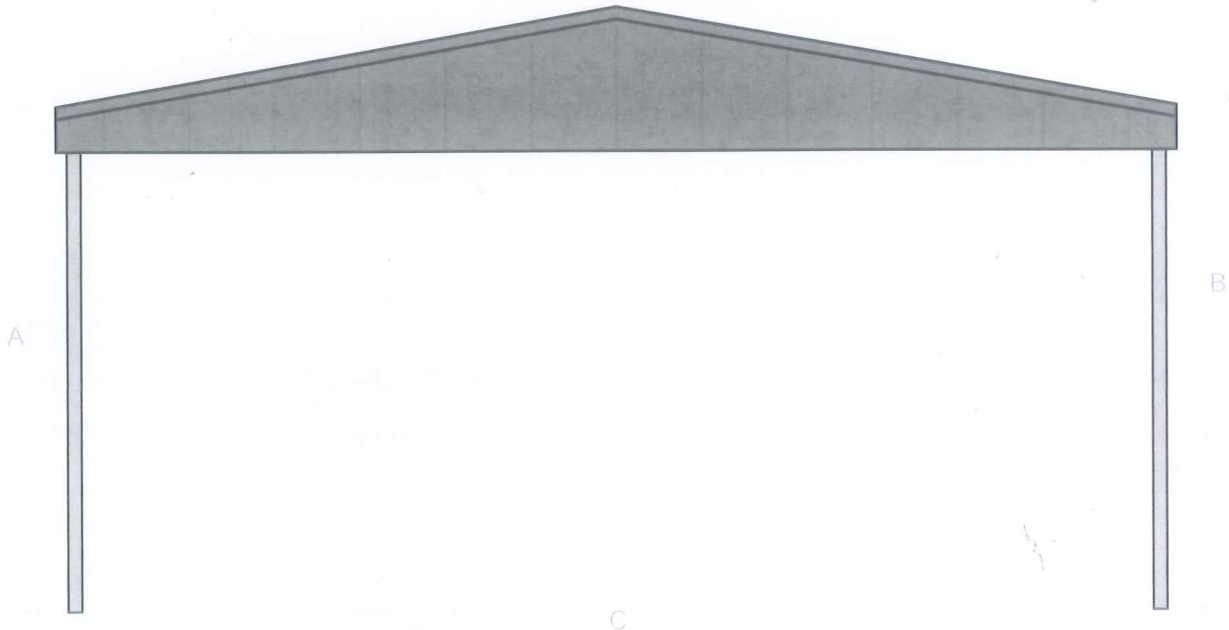
ROCKHAMPTON REGIONAL COUNCIL

APPROVED PLANS

These plans are approved subject to the current conditions of approval associated with

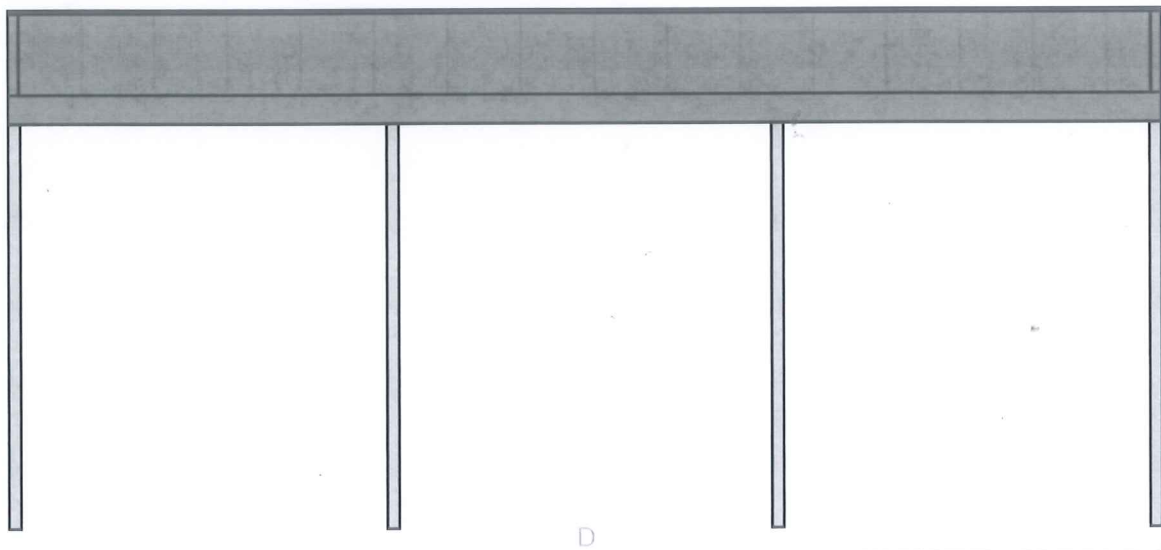
Preliminary Approval No.: D/99-2018

Dated: 27 September 2018



A: 4.50m B: 5.38m C: 10.00m Pitch 10°

Front View



D: 12.00m

Side View



Line

Length 19.89 m

Bearing 138.47°

Show inline measurements

Show Elevation Profile

AutoTrack

Clear

ROCKHAMPTON REGIONAL COUNCIL

APPROVED PLANS

These plans are approved subject to the current conditions of approval associated with **Preliminary Approval No.: D/99-2018**

Dated: 27 September 2018

Vertical Panorama Terrain Roadmap

Street Maps

Properties

nearmap
current · clear · change

Image may be subject to copyright 5 m Terms of Use