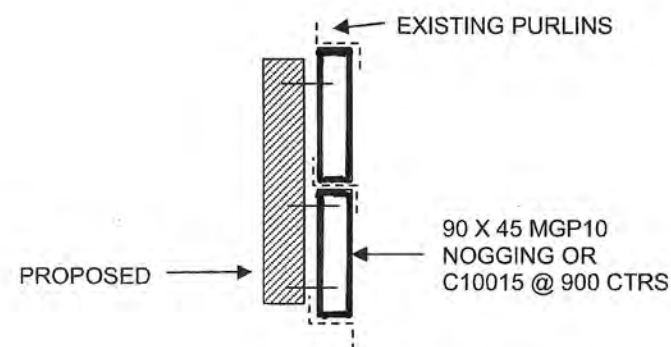
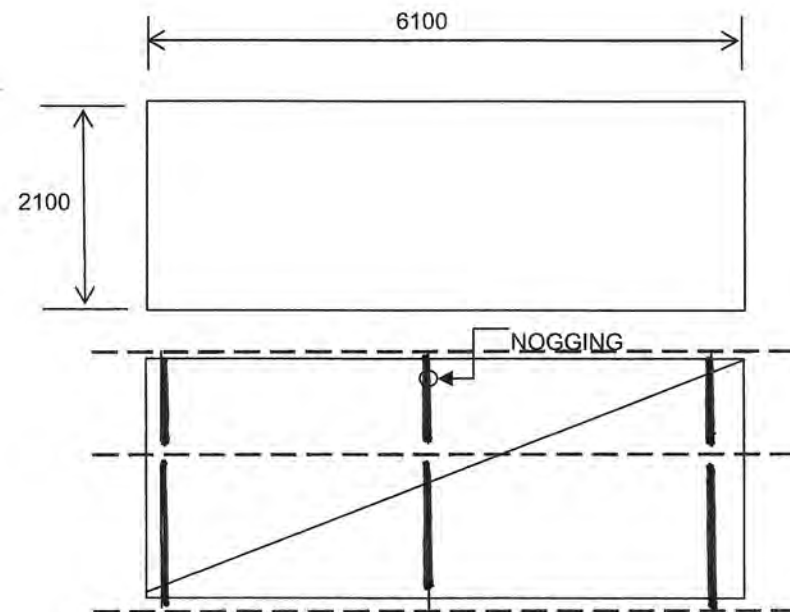


CONCRETE NOTES

- 1 All concrete works and materials shall comply with AS3600 Concrete Code.
- 2 Readymixed concrete shall be supplied by an approved concrete supplier.
Concrete Durability Class A2 --- Tropical Climate Zone.
Footings.....Durability Class A2, 50 min top cover, 80 slump **N20**.
- 3 Concrete shall be thoroughly vibrated & cured with an approved curing compound.

STRUCTURAL STEELWORK

- 1 All materials and workmanship shall comply with the Structural Steel Codes, AS4100 and AS1250.
- 2 All cleats 8 mm thick M.S. plate UNO.
- 3 All bolts shall be 12 dia grade 4.6s UNO.
- 4 All welds Full Strength Butt Welds UNO.
- 5 Welding shall be carried out by an experienced welder pursuant with AS1554. All welds shall be classified S.P. special purpose UNO.
- 6 Preparation, procedure and protective coatings shall be designed by others to suit site exposure and environment.
- 7 **Material Codes**
Plate and Hot Rolled Sections.....F_{sy}=250 AS3679
RHS and SHS sections.....F_{sy}=350 AS1163
- 8 Contractor shall be responsible for all temporary supports and bracing until sign structure has been fully secured and concrete footings have achieved design strength.



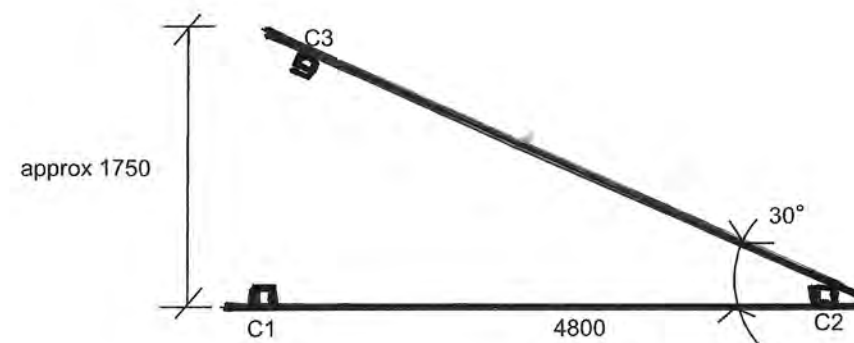
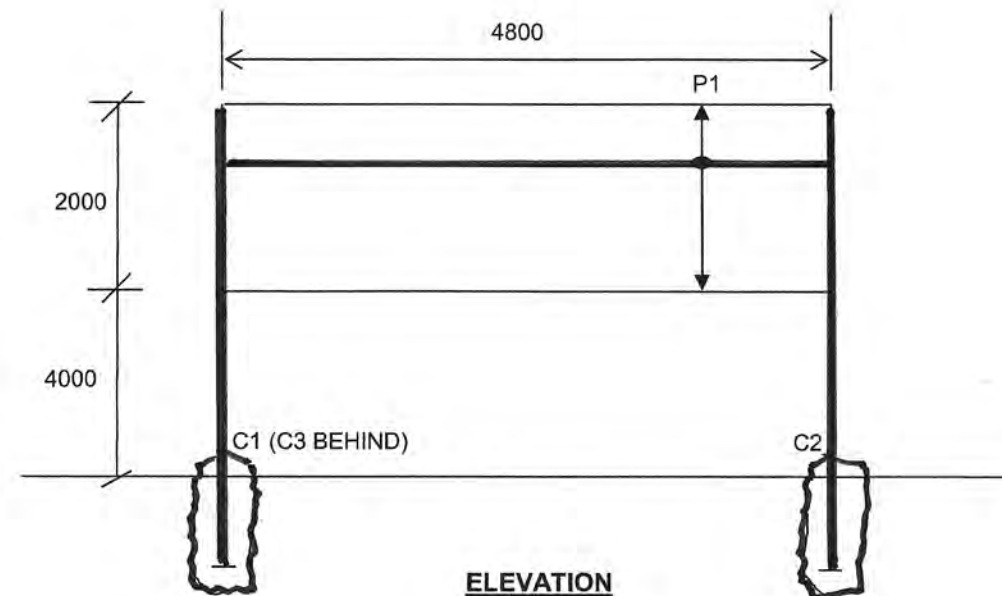
WALL MOUNTED SIGN

DESIGN PARAMETERS

- 1 Dead Load..... Self weight
- 2 Wind Load
Design wind criteria to AS1170.2:
Design life..... 50 years
Region..... C (Cyclonic)
Importance level..... 2
Terrain category..... 2.5
- 3 Foundation..... 100kPa safe allowable bearing pressure.

MEMBER SCHEDULE

P1.....	purlins.....	C10015 at 400 ctrs
C1,2,3.....	columns.....	150 x150 x 6.0 SHS
	footings.....	2000 deep x 600 diameter



PLAN VIEW

TYPICAL DETAIL

Site Location on other Drawing

ROCKHAMPTON REGIONAL COUNCIL

APPROVED PLANS

These plans are approved subject to the current conditions of approval associated with

Development Permit No.: D/6-2021

Dated: 31 May 2021

30.03.2021	A	Council Approval
Date	Rev	Notes
Approved		
Checked		
Drawn		MJT
Design		JMT
Tapsell Consulting Engineers Pty Ltd A.C.N. 065 154 949 14 Milford Avenue Frenchville Qld 4701 Telephone (07) 49 263554 Email: john.tapsell@tapsellconsultingengineers.com.au		
Project Proposed New Signs for Signature Signs at 7 Featherstone Street, Parkhurst QLD 4702 Client: Komatsu		
Job No.:	0321-71	
Rev	A	Sheet 1 of 1

KOMATSU

SIGN 2 - SHED/WALL SIGN BOUNDARY ROAD NORTH
PROPOSED TIER 2 - EXTRA LARGE WALL MOUNT LETTERS WITH
PANEL (2.1m x 6.4m) TO BE FITTED TO SIDE OF EXISTING
BUILDING, LOCATED CENTRALLY ABOVE ELECTRICAL
SUBSTATION BUILDING AND APPROX. 4m ABOVE GROUND LEVEL

BOUNDARY ROAD NORTH

YAAMBA ROAD (BRUCE HIGHWAY)

FEATHERSTONE STREET

BOUNDARY ROAD SOUTH

FORMER SIGN
FRAME TO BE
REMOVED

**SIGN 3 - NEW SIGN TO
REPLACE FORMER SIGN
BOUNDARY ROAD SOUTH**
PROPOSED NEW SIGN GREATER
THAN 3m INSIDE BOUNDARY
OUTSIDE CURRENT FENCE 1.22m
WIDE X 1.22 HIGH AND APPROX.
1.5m ABOVE GROUND LEVEL



Made possible by mining

SIGN 1 - BILLBOARD BRUCE HIGHWAY FRONTAGE
PROPOSED TWIN FACE FREE STANDING SIGN A - GROUND
ILLUMINATED SIGN (4.8m WIDE X 2m HIGH). TOP OF SIGN
APPROX 6m ABOVE GROUND. REFER INSET FOR SETOUT

ROCKHAMPTON REGIONAL COUNCIL

APPROVED PLANS

These plans are approved subject to the current
conditions of approval associated with

Development Permit No.: D/6-2021

Dated: 31 May 2021



**DAVEY
ENGINEERING
SOLUTIONS**

CAPRICORN COAST
LAMMERMOOR
Queensland 4703
Email: admin@daveyes.com.au

REVISION / ISSUE REGISTER

No.	DATE	REMARKS
A	04/21	MCU PUBLIC NOTIFICATION

DESIGN		DRAWN	
JD		JD	
NAME	SIGNATURE	R.P.E.Q.	
J. DAVEY		8386	

for & on behalf of Davey Engineering Solutions Pty Ltd

SCALES:

0 5.0 10.0m	1:1000 (A1)
0 10.5 40.0m	1:2000 (A3)

DATUM: AHD
COORDINATES: GDA94

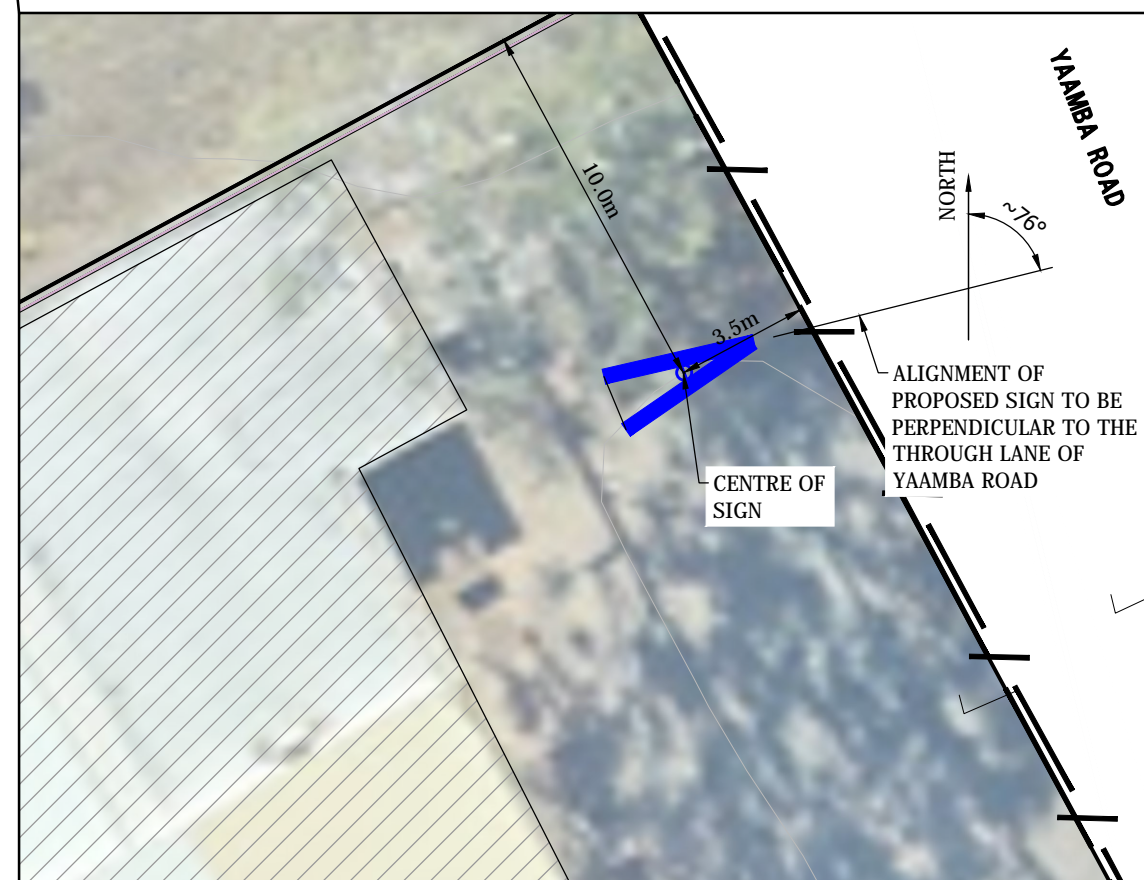
**JOY GLOBAL
AUSTRALIA
PTY LTD.**

SIGNAGE LAYOUT PLAN

FILE No.

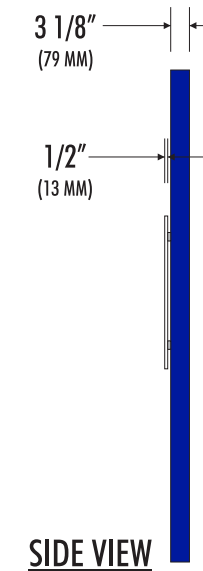
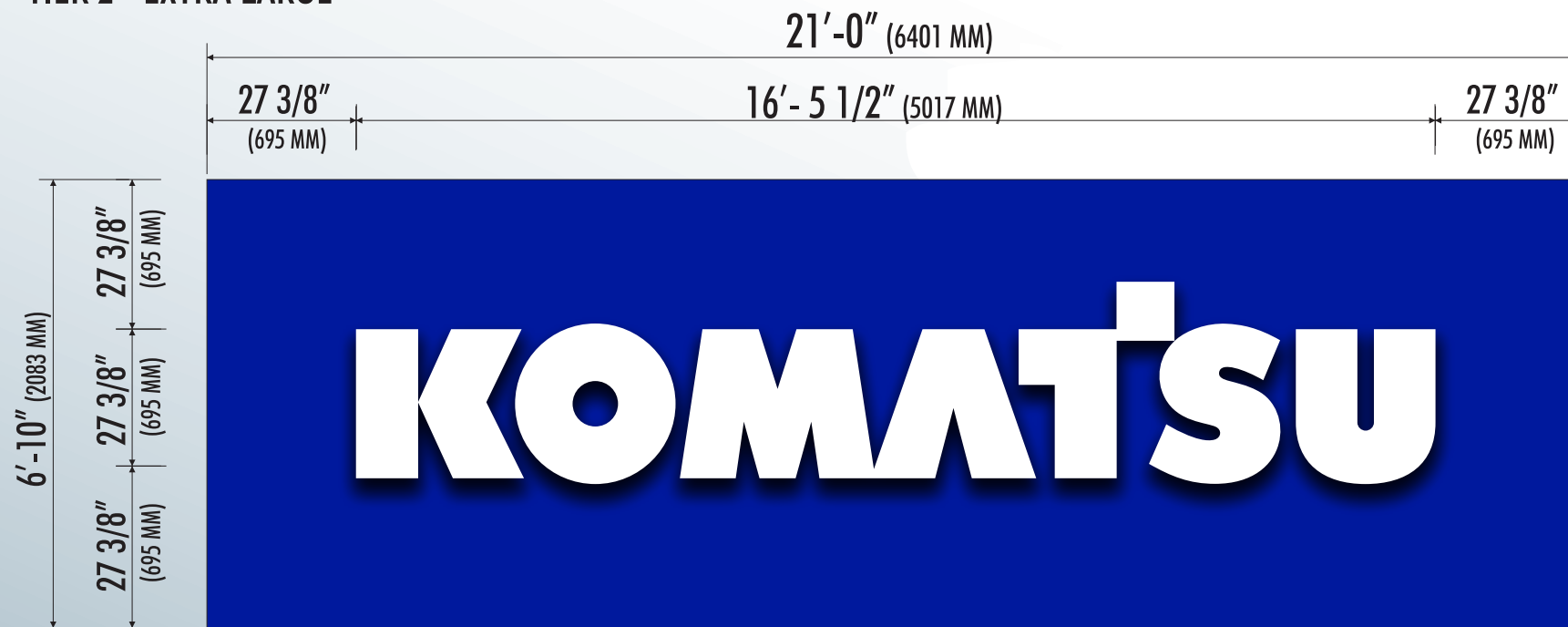
DWG No. 005 A

PLOT DATE: 7/4/2021 1:37:17 PM
DO NOT SCALE - IF IN DOUBT ASK

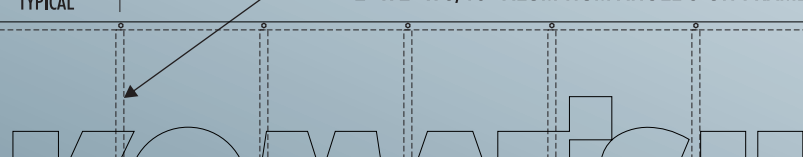


**INSET - FREESTANDING SIGN 1
SETOUT**

Sign 2 - Northern Boundary Wall Mount


$$3/8'' = 1'-0''$$

- ROCKHAMPTON REGIONAL COUNCIL**
APPROVED PLANS

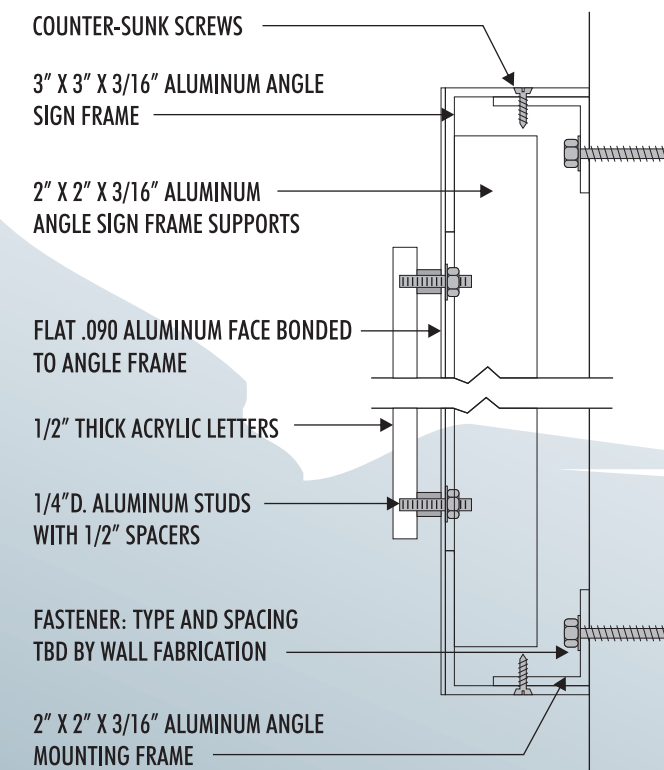


36" (914 MM)
TYPICAL

2" X 2" X 3/16" ALUMINUM ANGLE SIGN FRAME SUPPORTS

KOMATSU

3" X 3" X 3/16" ALUMINUM ANGLE SIGN FRAME



SECTION VIEW SCALE: 3" = 1'-0"



UL LISTED via STANDARD UL48
FILE NO:E60042 DaNITE SIGN CO.

For electrical illuminated signs. For non-illuminated signs, UL does not apply.

 PMS 072 BLUE (GLOSS FINISH)
 WHITE (GLOSS FINISH)

APPROVED-CUSTOMER _____ DATE _____

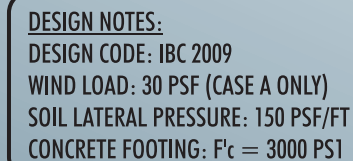


DATE	4/1/20	REV. DATE:
FILE NAME	KOMATSU - SIGN STANDARDS.CDR	
DIRECTORY	THAD > KOMATSU > NEW BRANDING 2020	

SCALE AS NOTED SALE JB DESIGNER TK

This project is an original unpublished design concept protected by copyright laws of The United States of America. Prior to sale or paid design fees, all visual materials, specifications, annexes and revisions remain the exclusive property of DaNite Sign Company. The use of any part herein to manufacture, sell or adapt this concept to other mediums by unauthorized parties constitutes an actionable plagiarism.

Sign 3 - Boundary Road South



These plans are approved subject to the current conditions of approval associated with
Development Permit No.: D/6-2021
Dated: 31 May 2021


$$\frac{3}{4}'' = 1'-0''$$

- SIGN CABINET: 3" X 1" ALUMINUM CHANNEL FRAME WITH .090 FLAT ALUMINUM FACES PAINTED PMS 072 BLUE AND WHITE - (GLOSS FINISHES)
- REVEALS: 1/4" THICK ALUMINUM PAINTED WHITE (GLOSS FINISH)
- SUPPORT POSTS: 3" X 3" X 1/8" WALL ALUMINUM TUBING WITH WELDED 45 DEGREE TOP CAPS, PAINTED WHITE (GLOSS FINISH)
- "KOMATSU": CUT OUT 1/8" THICK ACRYLIC PAINTED WHITE (GLOSS FINISH) - BONDED TO SIGN FACE.
- DIRECTIONAL GRAPHICS: CUT BLACK VINYL (FONT: UNIVERS 67 COND. BOLD)

