

ROCKHAMPTON REGIONAL COUNCIL

APPROVED PLANS

These plans are approved subject to the current conditions of approval associated with **Preliminary Approval No.: D/50-2021**

Dated: 31 May 2021

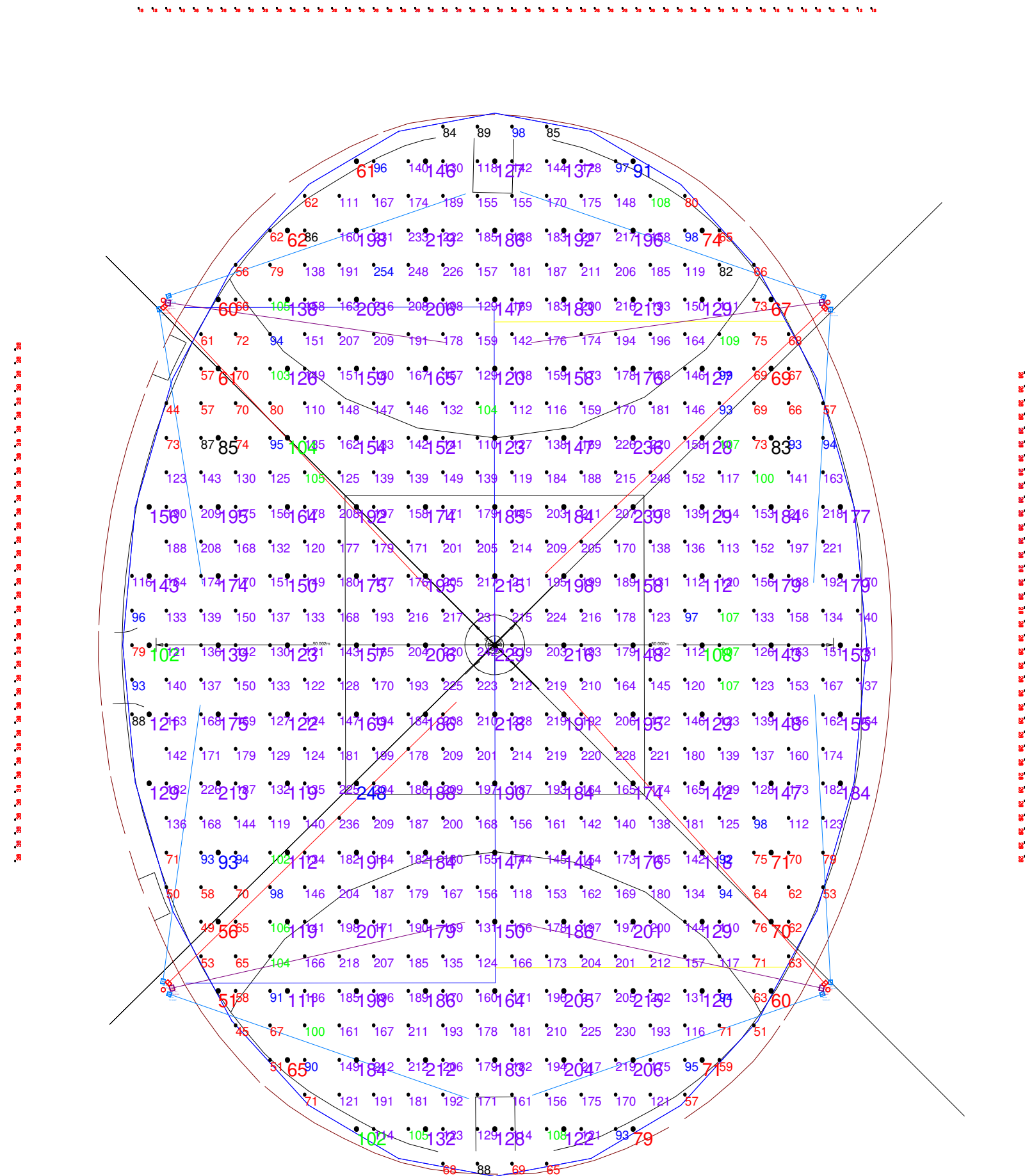
ROCKHAMPTON REGIONAL COUNCIL

APPROVED PLANS

These plans are approved subject to the current conditions of approval associated with

Preliminary Approval No.: D/50-2021

Dated: 31 May 2021



ROCKHAMPTON REGIONAL COUNCIL

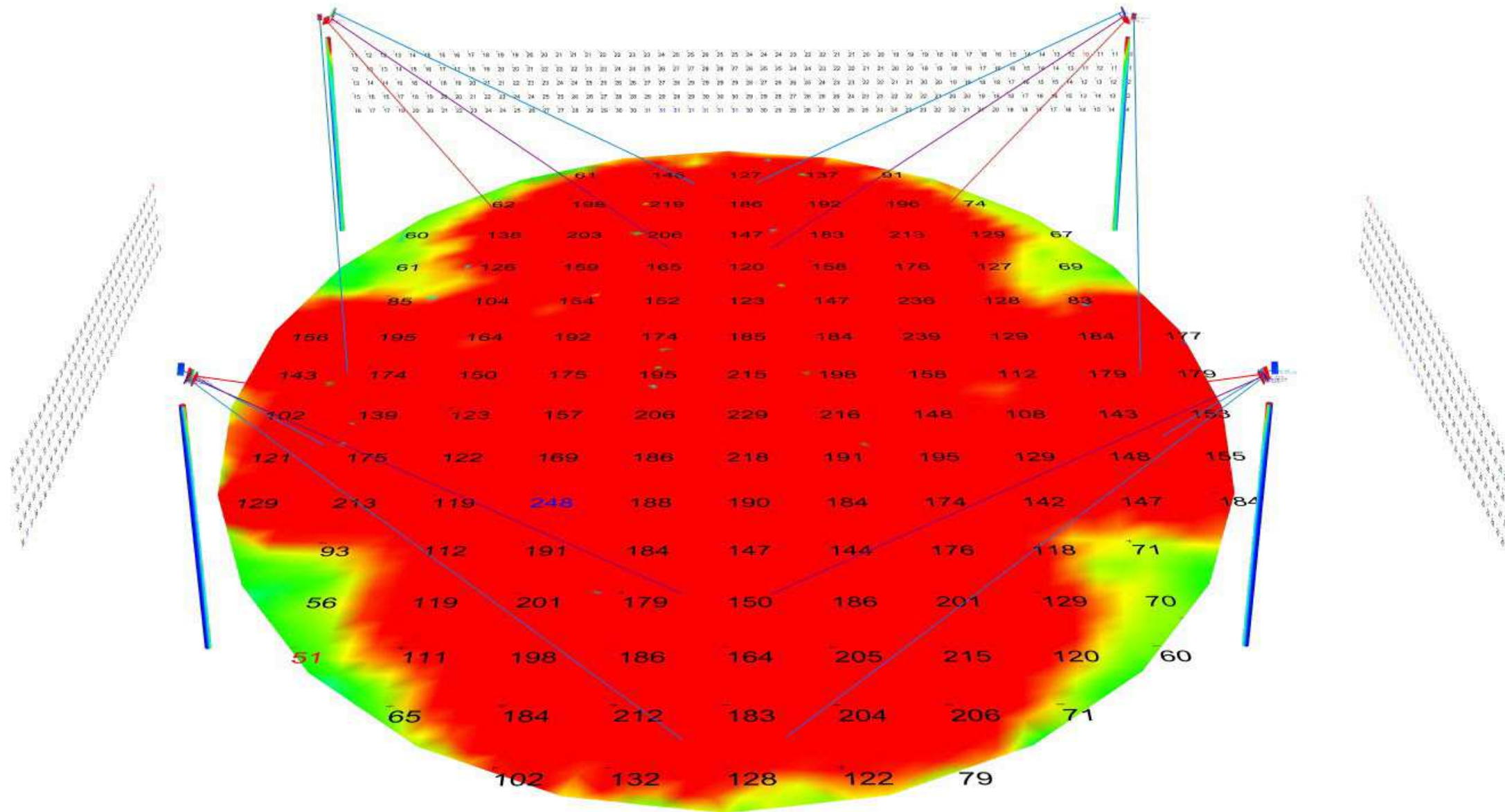
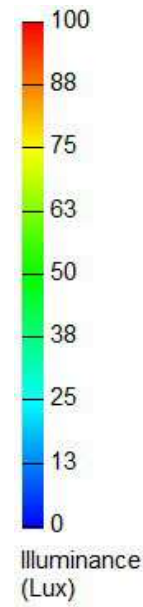
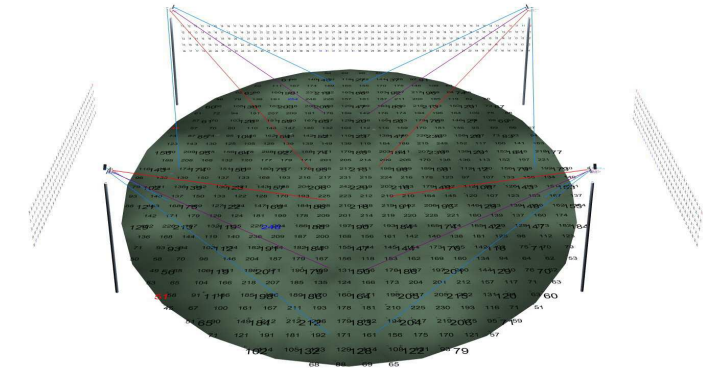
APPROVED PLANS

These plans are approved subject to the current conditions of approval associated with

Preliminary Approval No.: D/50-2021

Dated: 31 May 2021

Pseudo Colour



Filename: Brothers AFC - Lighting Design v2.AGI

Symbol	Qty	Label	Arrangement	Lumens	LLF	Description	Watts
+	8	CV-1200W-LV(50K)20°-LPD	SINGLE	182924	0.800	CV-1200W-LV(50K)	1976.4
-	4	CV-1800W-LV(50K)20°-LPD	SINGLE	272924	1.000	CV-1800W-LV(50K)	1794.3
-	4	CV-1800W-LV(50K)40°-LPD	SINGLE	274050	1.000	CV-1800W-LV(50K)	1976.5

Label	CalcType	Units	Avg	Max	Min	Min/Avg	Min/Max
Field 10M_Top	Illuminance	Lux	152.19	248	51	0.34	0.21
Field 5M_Top	Illuminance	Lux	150.88	254	44	0.29	0.17
Vetical to 10M East	Illuminance	Lux	26.82	31	23	0.86	0.74
Vetical to 10M North	Illuminance	Lux	21.03	31	10	0.48	0.32
Vetical to 10M South	Illuminance	Lux	22.05	39	8	0.36	0.21
Vetical to 10M West	Illuminance	Lux	31.39	37	26	0.83	0.70

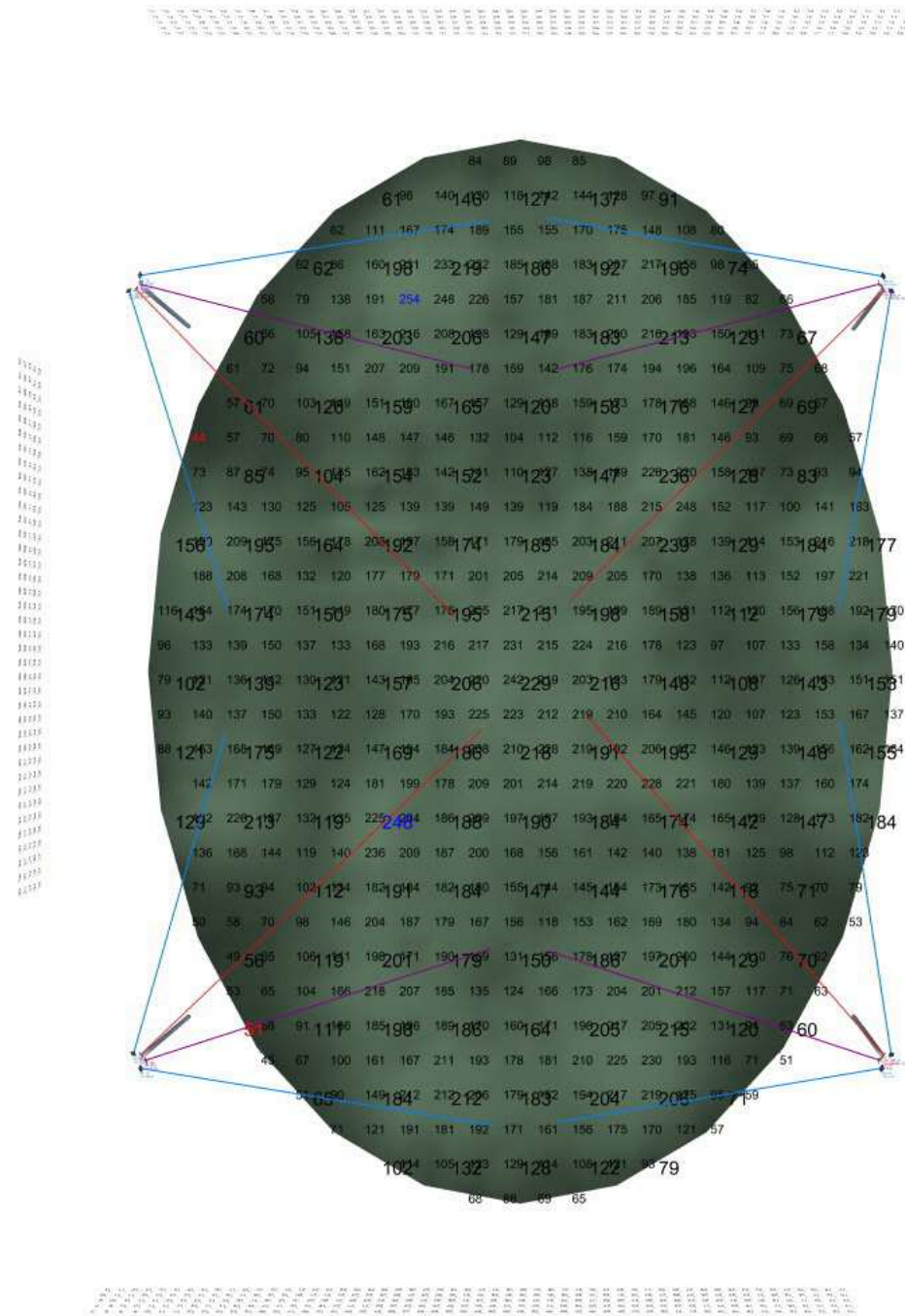
ROCKHAMPTON REGIONAL COUNCIL

APPROVED PLANS

These plans are approved subject to the current conditions of approval associated with

Preliminary Approval No.: D/50-2021

Dated: 31 May 2021



Project: Brothers AFC - Lighting Design v2.AGI

Reflectances	.2	Date:	21/01/2021	Client:
Ceiling Height	N/A	Project File:	Robert Steer MIES	
Mounting Height	25M	This design and specification is the copyright of Lux Plot Design Pty Ltd. (ABN: 80 541 548 130) and its client. Any unauthorised use may result in proceedings being brought against the user by Lux Plot Design Pty Ltd.		
Pole Height	25M	Calculation Points at Workplane:	0mm on Ground	Signed: James Graham

**** Disclaimer ****

It is recommended as good design practice that all parameters are known and alternate designs for the purposes of comparison are carried out on an equal basis.

If these parameters are incorrect, Lux Plot Design Pty Ltd accepts no responsibility for discrepancies between AGI32 design readings and actual readings after installation.

Whilst all care is taken, Lux Plot Design Pty Ltd recommends that all designs be certified by the Project Electrical Engineer.

Designed on behalf of

 M 0411 425 534
 A 5/36 Berkeley St Carlton 3053
 W www.luxplot.com.au
 E james.graham@luxplot.com.au
 +61 411 425 534

Please consider the environment before printing this design

LPD Area Summary						
Label	Area	Total Watts	LPD			
Luminaire Location Summary						
LumNo	Label	X	Y	Z	Orient	Tilt
1	CV-1200W-LV(50K)92.493	51.847	28	93.173	56.132	
2	CV-1200W-LV(50K)92.491	149.249	28	266.412	54.748	
3	CV-1800W-LV(50K)98.014	149.61	27.5	313.144	63.894	
4	CV-1800W-LV(50K)91.671	149.479	27.5	223.535	63.732	
5	CV-1800W-LV(50K)91.699	51.684	27.5	131.786	64.338	
6	CV-1800W-LV(50K)96.657	51.777	27.5	44.249	64.709	
7	CV-1200W-LV(50K)98.89	51.991	28	82.328	55.257	
8	CV-1200W-LV(50K)98.324	149.3	28	279.03	55.19	
9	CV-1200W-LV(50K)91.327	50.203	28	199.218	57.817	
10	CV-1200W-LV(50K)98.766	50.188	28	340.764	58.657	
11	CV-1200W-LV(50K)91.502	151.061	28	160.892	58.931	
12	CV-1200W-LV(50K)96.679	151.172	28	18.951	58.359	
13	CV-1800W-LV(50K)96.591	150.184	27.5	351.868	56.017	
14	CV-1800W-LV(50K)91.267	150.246	27.5	187.884	57.109	
15	CV-1800W-LV(50K)91.235	51.058	27.5	167.926	58.07	
16	CV-1800W-LV(50K)91.165	51.058	27.5	12.675	57.674	