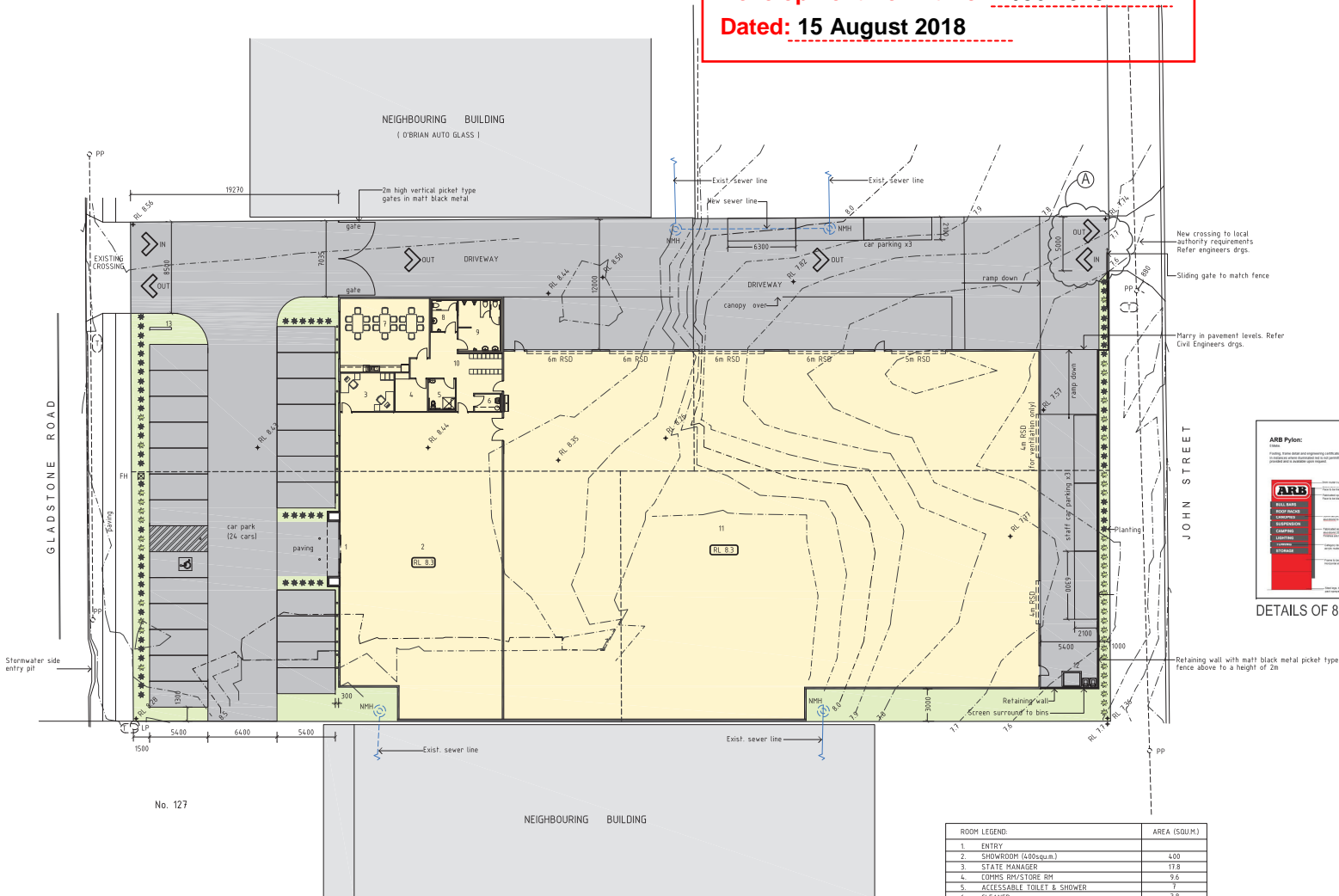


APPROVED PLANS

These plans are approved subject to the current conditions of approval associated with

Development Permit No.: D/36-2018

Dated: 15 August 2018



PROPOSED SITE & FLOOR PLAN

NOTE: DRAWING TO BE READ IN CONJUNCTION WITH VISION SURVEYS SURVEY DRAWING. CONTOURS AT 100mm INTERVALS.

PLANTING SPECIES TO BE SELECTED FROM ROCKHAMPTON CITY PLAN - PLANNING SCHEME FOR CITY OF ROCKHAMPTON PLANNING POLICY No.6 - PLANTING SPECIES

ALL STORMWATER AND CIVIL WORKS TO BE AS DIRECTED BY MCMURTRIE CONSULTING ENGINEERS

CAR PARKING:

SHOWROOM 1 SPACE / 40sqm.
SHOWROOM 400sq.m = 10 spaces

WAREHOUSE 1 SPACE / 100sqm.
WAREHOUSE 1620sq.m = 16 spaces

TOTAL SPACES REQUIRED = 26 spaces

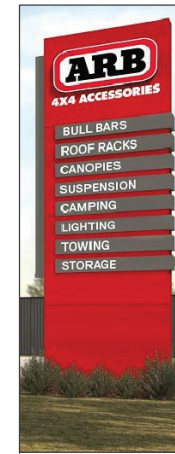
TOTAL SPACES PROVIDED = 30 spaces



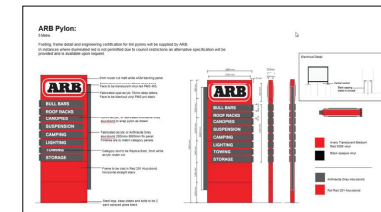
ROOM LEGEND:	AREA (SQ.M)
1. ENTRY	
2. SHOWROOM (400sq.m)	400
3. STORE MANAGER	17.8
4. COMMS RM/STORE RM	9.6
5. ACCESSABLE TOILET & SHOWER	7
6. CLEANER	3.8
7. LUNCH ROOM	53
8. FEMALE/AMBULANT TOILET	6.5
9. MALE/AMBULANT TOILET	18
10. STAFF LOCKER ALCOVE & PASSAGE	32
11. WAREHOUSE & FITTING AREA (1620sq.m)	1620
12. SUBURB WITH VISUAL SCREENING SURROUND	
13. PYLON SIGN	

LEGEND:

FH	PROPOSED FIRE HYDRANT
NMH	NEW MANHOLE - REFER CIVIL DRAWINGS
LP	LIGHT POLE
MH	SEWER MANHOLE
PP	POWER POLE
RSD	ROLLER SHUTTER DOOR
T	TELSTRA PIT
W	WATER METER



8m PYLON SIGN ELEVATION
(SIGN ADJACENT TO GLADSTONE ROAD)



DETAILS OF 8m PYLON SIGN

-	29-06-18	JOHN ST. ENTRY
-	17-03-18	TOWN PLANNING ISSUE
REVISION		

JOE:
**PROPOSED SHOWROOM &
WAREHOUSE**
AT: 123 Gladstone Road
Allenstown, Queensland
FOR:



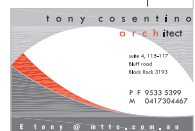
TITLE:
PROPOSED SITE LAYOUT
8m PYLON SIGN DETAILS

SCALE: 1:200

DATE: MARCH 2018

JOB: 2017/06

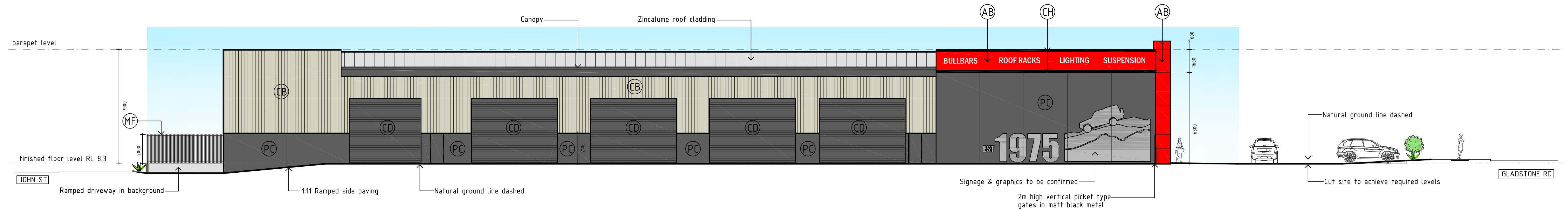
DRG:



© 2016 TONY COSENTINO ARCHITECT

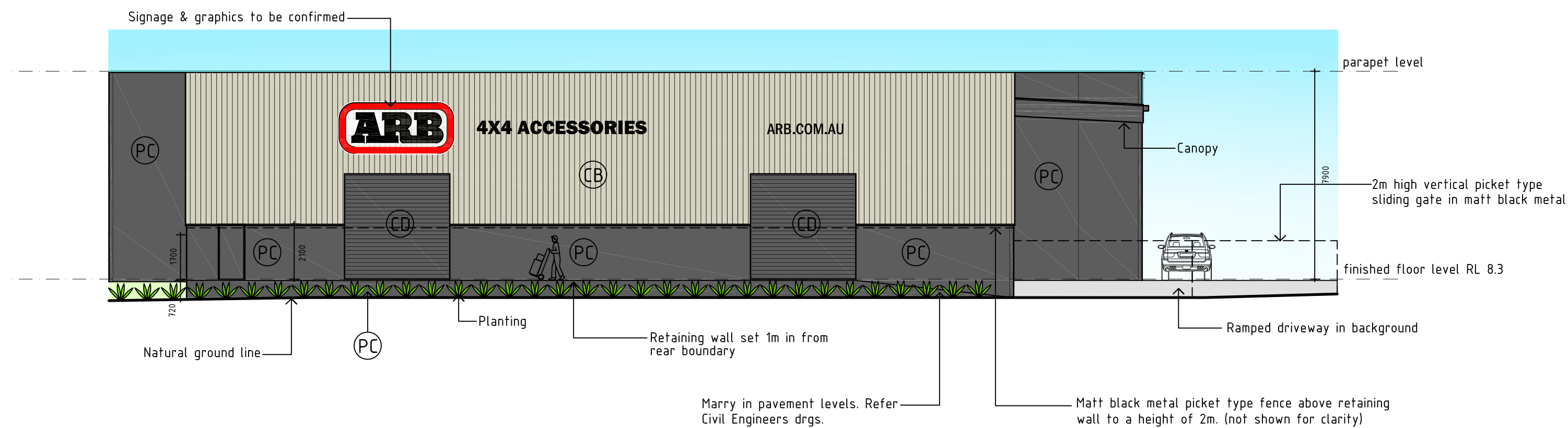


PROPOSED SOUTH ELEVATION



PROPOSED NORTH ELEVATION
NOTE: GRAPHICS ARE DIAGRAMMATIC AND TO BE CONFIRMED

ROCKHAMPTON REGIONAL COUNCIL
APPROVED PLANS
These plans are approved subject to the current conditions of approval associated with
Development Permit No.: D/36-2018
Dated: 15 August 2018



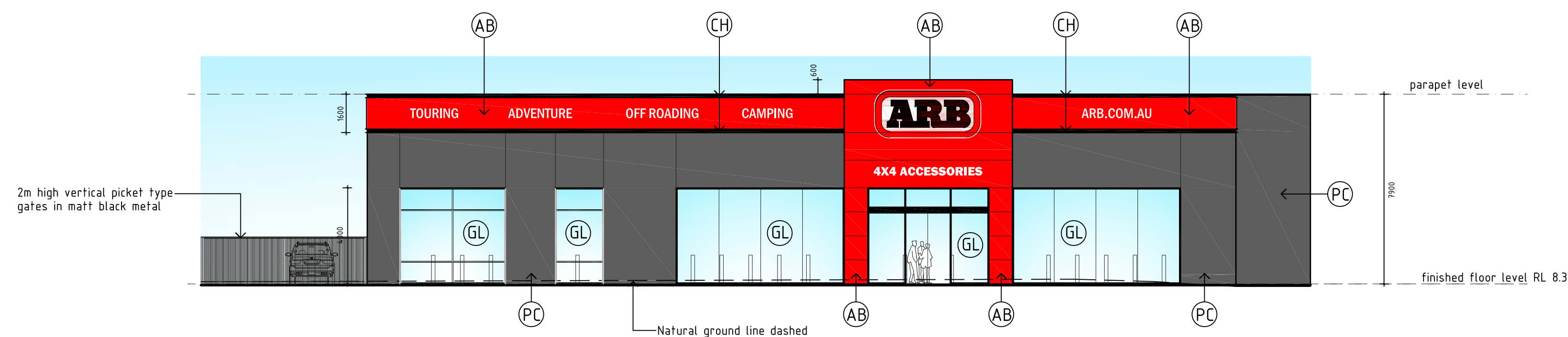
PROPOSED EAST ELEVATION
(JOHN STREET)
NOTE: GRAPHICS ARE DIAGRAMMATIC AND TO BE CONFIRMED

PRIMARY COLOUR LEGEND:



MATERIALS LEGEND:

- (AB) ALUCOBOND PRE FINISHED METAL CLADDING
- (CB) METAL COLOURBOND WALL CLADDING IN SHALE GREY
- (CD) METAL COLOURBOND FINISH ROLLER DOOR IN MONUMENT
- (CH) 150 CHANNEL POWDERCOATED IN BLACK SATIN
- (GL) LOW-E GLAZING
- (MF) MATT BLACK METAL PICKET STYLE FENCE
- (PC) PRE-CAST CONCRETE PANELS TEXTURED PAINT FINISH
- (PF) PRE-CAST CONCRETE PANELS NO FINISH
- ALUMINIUM FRAMED WINDOW & DOOR FRAMES POWDERCOTE MATT BLACK



PROPOSED WEST ELEVATION
(GLADSTONE ROAD)



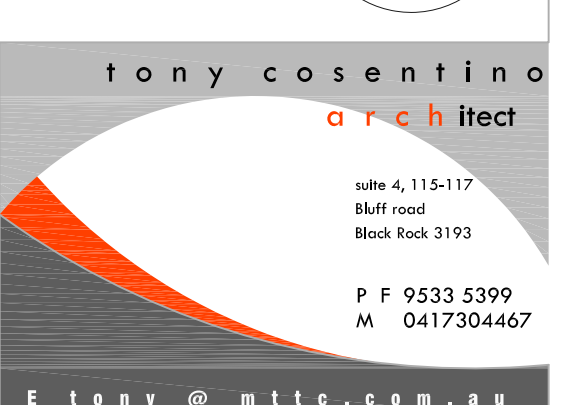
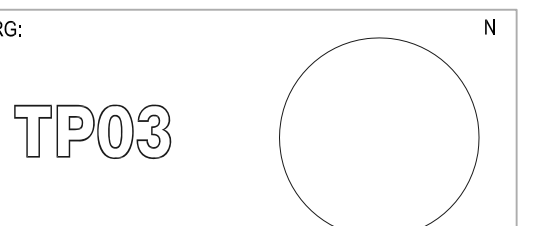
17-03-18 TOWN PLANNING ISSUE
REVISION

JOB:
PROPOSED SHOWROOM & WAREHOUSE
AT: 123 Gladstone Road
Allentown, Queensland
FOR:

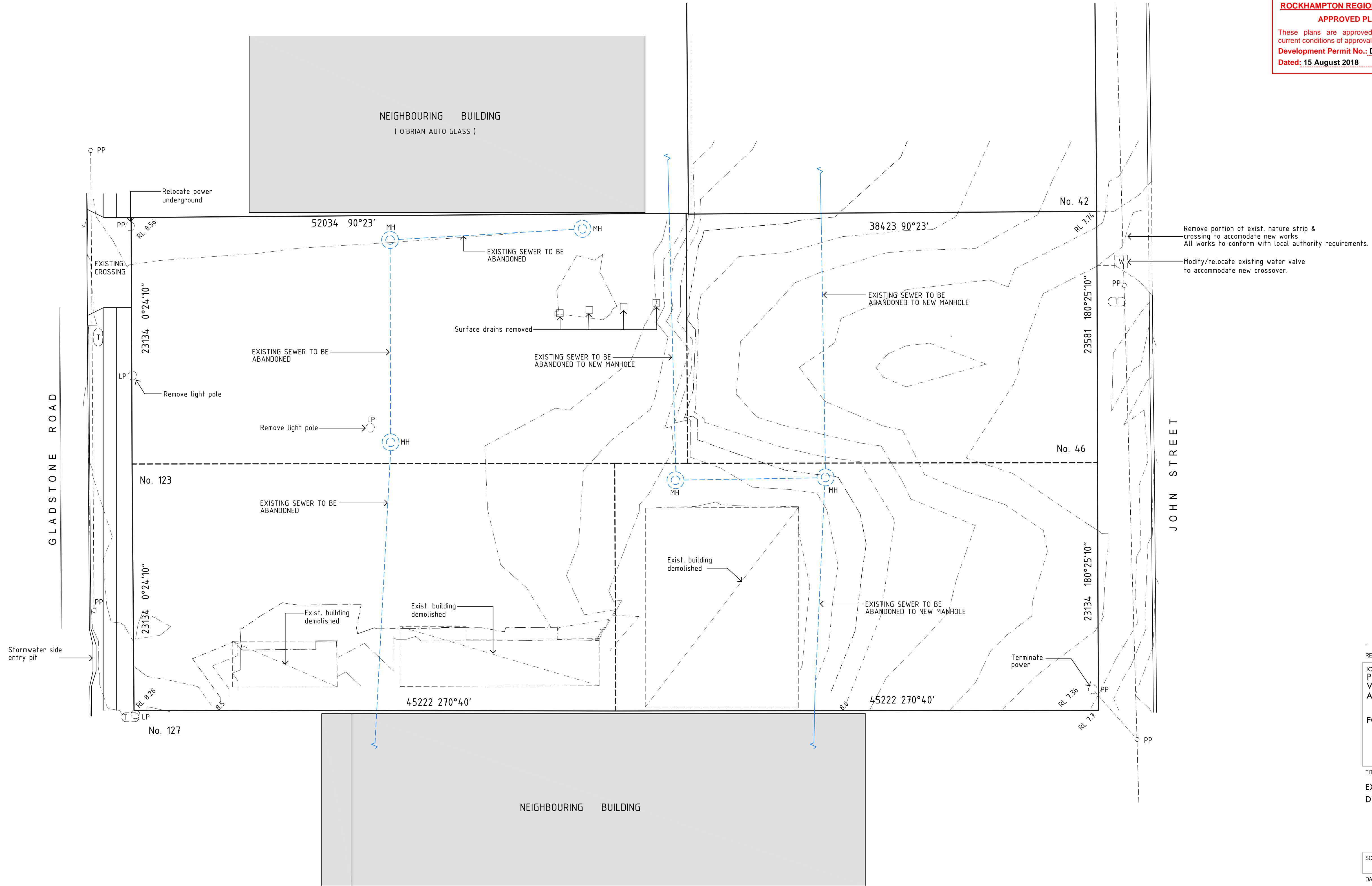


TITLE:
PROPOSED ELEVATIONS

SCALE: 1:150
DATE: MARCH, 2018
JOB: 2017/06
DRG:



ROCKHAMPTON REGIONAL COUNCIL
APPROVED PLANS
These plans are approved subject to the current conditions of approval associated with
Development Permit No.: D/36-2018
Dated: 15 August 2018



EXISTING SITE & GROUND FLOOR / DEMOLITION PLAN

NOTE: DRAWING TO BE READ IN CONJUNCTION WITH VISION SURVEYS SURVEY DRAWING. CONTOURS AT 100mm INTERVALS
REFER TO CIVIL ENGINEERS DRAWINGS FOR REALIGNED SEWER

LEGEND:
LP LIGHT POLE
MH SEWER MANHOLE
PP POWERPOLE
T TELSTRA PIT
W WATER METER



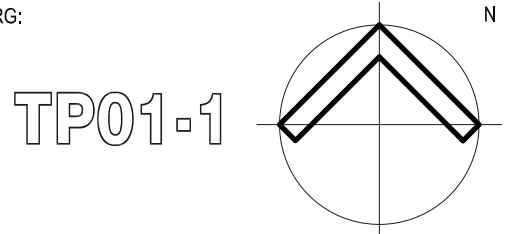
17-03-17 TOWN PLANNING ISSUE
REVISION

JOB:
PROPOSED SHOWROOM &
WAREHOUSE
AT: 123 Gladstone Road
Allentown, Queensland
FOR:

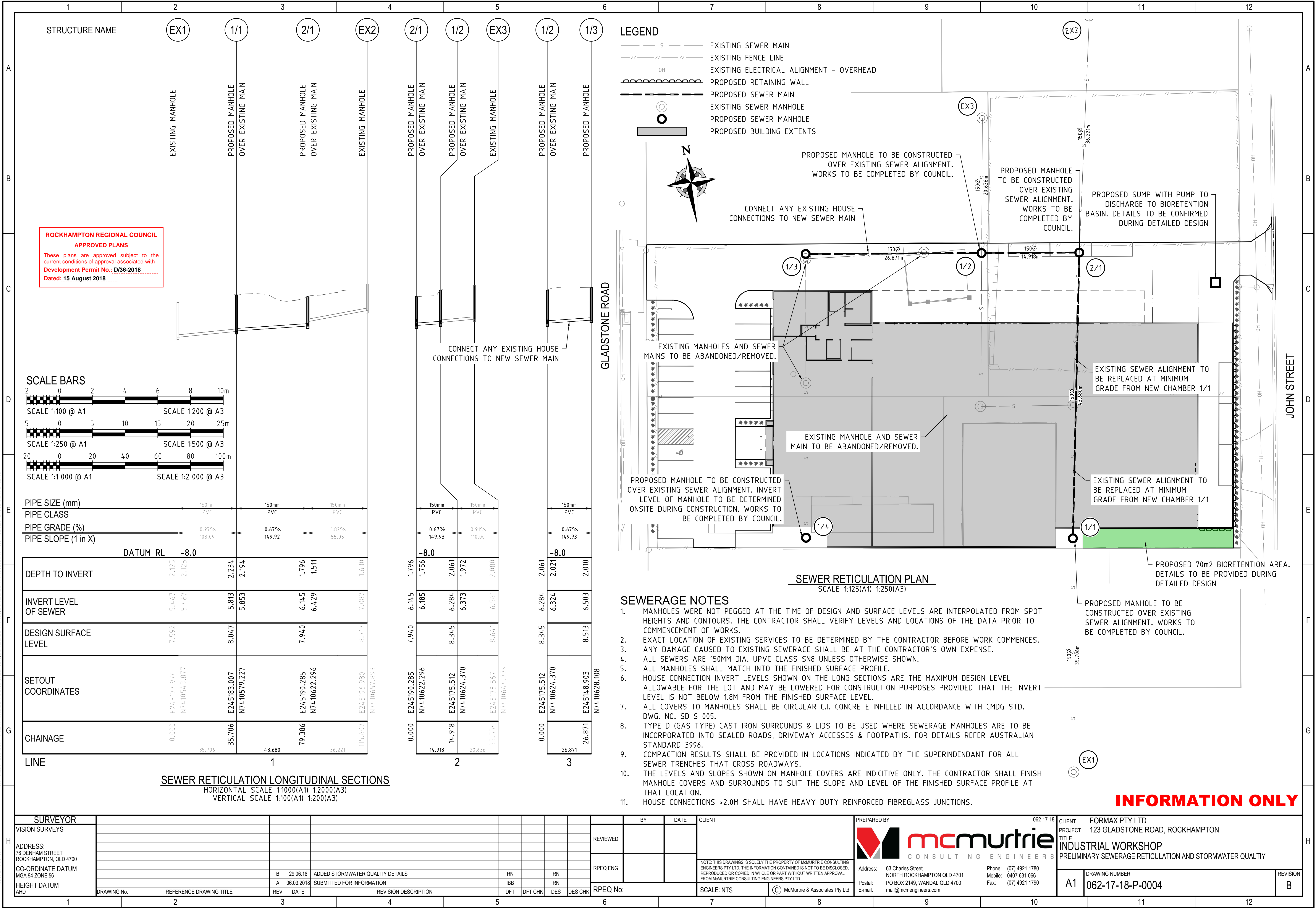


TITLE:
EXISTING SITE PLAN
DEMOLITION PLAN

SCALE: 1:200
DATE: MARCH, 2018
JOB: 2017/06
DRG:



tony cosentino
architect
suite 4, 115-117
Bluff road
Black Rock 3193
P F 9533 5399
M 0417304467
E tony @ mtc . com . au



These plans are approved subject to the current conditions of approval associated with

Development Permit No.: D/36-2018

Dated: 15 August 2018

External Signage

8m pylon

Main structure

Fabricated internal corrosion treated steel frame.

Frame clad in Red 201 Alucobond.

Fabricated return section to be clad in Anthracite Grey 105 Alucobond.

SHS steel legs with welded base plates 2 pack sprayed black.

Logo

3mm Router cut white ACM backing panel.

Fabricated opal acrylic 60mm deep band with Avery Translucent Medium Red 5506 vinyl applied to face. Returns to be opal acrylic.

Fabricated opal acrylic 70mm deep 'ARB' letters with opaque black vinyl applied to the face. Returns to be opal acrylic.

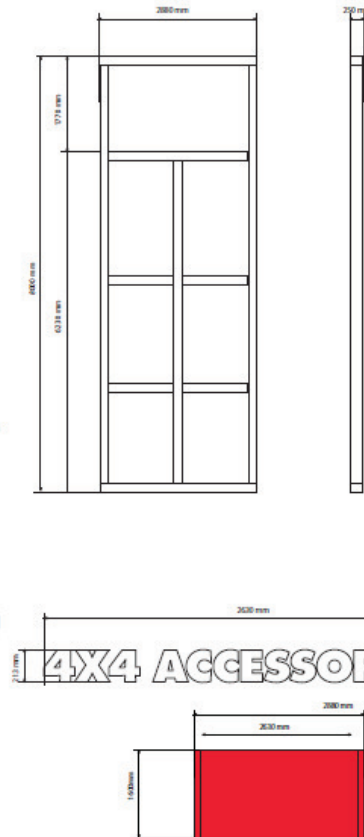
4x4 Accessories

Intracut out of Red 201 Alucobond with internally illuminated push through 6mm opal acrylic letters.

SHOEBOX STYLE ILLUMINATED BOXES

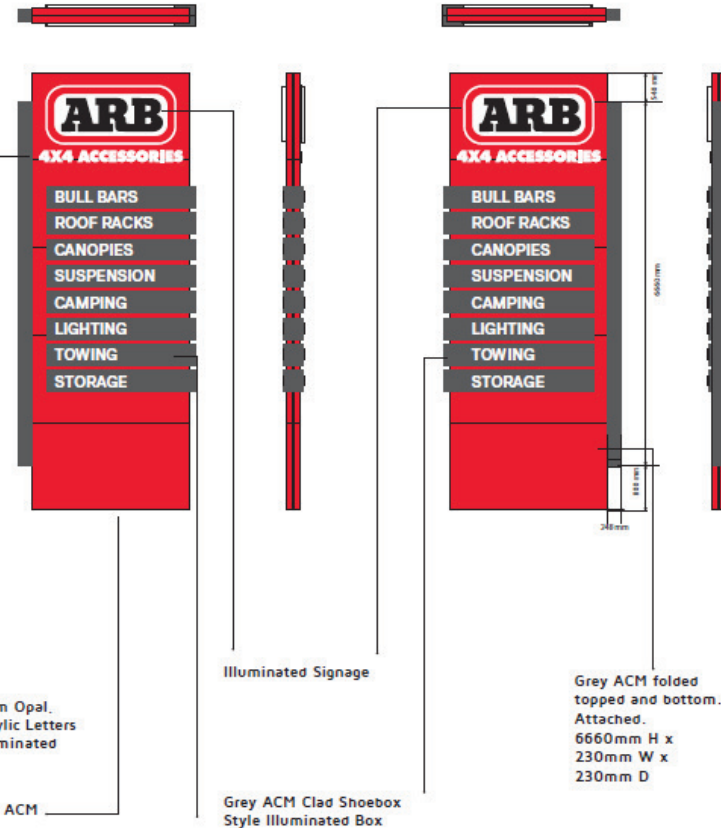
Fabricated internal Aluminium frame clad in Anthracite Grey 105 Alucobond with intracut text and push through 6mm opal acrylic letters.

Font for pylon category letters to be Replica Bold.



ELEVATION A

ELEVATION B



CORPORATE COLOURS



Please note:

- Pylon design is taken from a similar sized pylon based in terrain region A.
- ARB corporation is not responsible for the suitability of Pylon design.
- Please verify with independent engineers should certification be required.

APPROVED PLANS

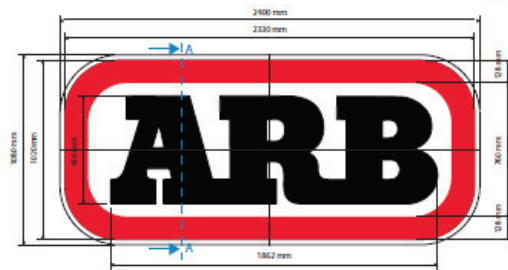
These plans are approved subject to the current conditions of approval associated with

Development Permit No.: D/36-2018

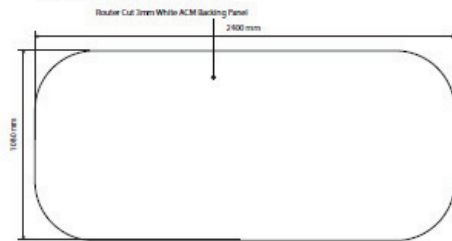
Dated: 15 August 2018

External Signage

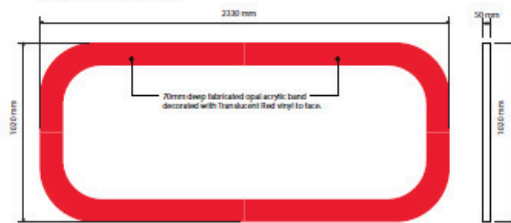
ARB Illuminated logo



Proposed Illuminated Signage - Assembled



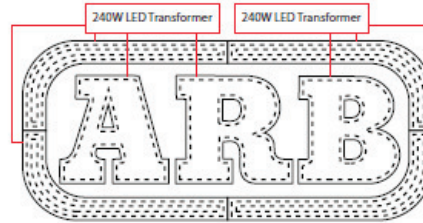
Router cut ACM backing panels



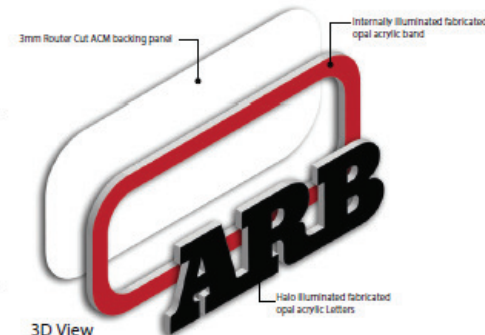
Internally Illuminated acrylic band - Front & Side View



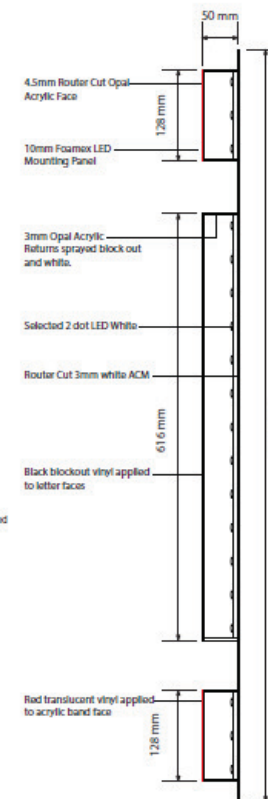
Halo Illuminated acrylic Letters - Front & Side View



LED Layout - White LEDs = IAW3248 (2dot White 0.48WLEDs) Qty 5 @ Modules



3D View



Section A-A

CORPORATE COLOURS



ROCKHAMPTON REGIONAL COUNCIL

APPROVED PLANS

These plans are approved subject to the current conditions of approval associated with

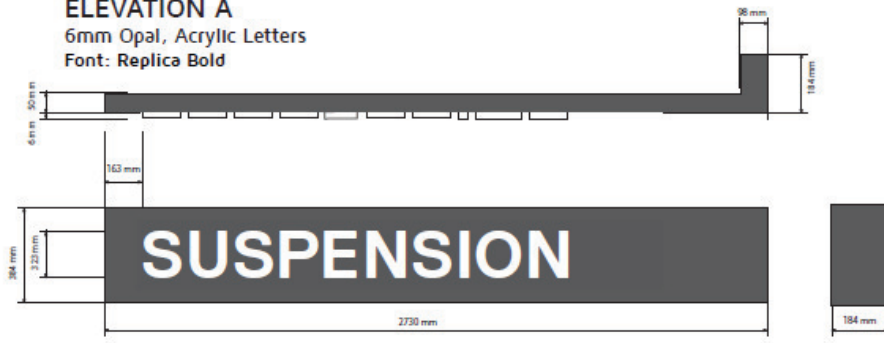
Development Permit No.: D/36-2018

Dated: 15 August 2018

GREY ACM CLAD SHOEBOX STYLE
ILLUMINATED BOX FOR 8M PYLON

ELEVATION A

6mm Opal, Acrylic Letters
Font: Replica Bold



ELEVATION B

6mm Opal, Acrylic Letters
Font: Replica Bold

